

# NEWSLETTER sitzmarke

September 2014 Volume 50 Issue 5



From Mission Control	2
Countdown to Liftoff	3
Trips (2014-2015)	4
The Art of Trip Sign-up	22
Trip Registration Form	23
Having a Blast	24
Member's Profile	26
Our Team	30



## From Mission Control

HAPPY ANNIVERSARY SPACE CITY SKI & ADVENTURE CLUB! September marks the maiden voyage of our travel season 50 years ago, and this year we are celebrating the golden anniversary in style.

We will start the year with our annual kick-off meeting, where members can enjoy anniversary cake, view a slide show of upcoming trips, and visit with the Trip Coordinators about the upcoming destinations. To continue our celebration, the October general meeting's theme is "Casino Night". You read it correctly, CASINO NIGHT in October! We'll have Las Vegas style Black Jack, Texas Hold'em, and Craps tables in the center of the Hess Ball Room, and they will be surrounded by our trip sign up tables. Bring your friends to our September and October meetings so they can participate in the fun. Maybe they'll even join the club!

Also, stay tuned because in November we will learn how those Rockies were formed. Believe it or not they weren't formed eons ago for our skiing and hiking pleasure. Our very own Barry Casper, Geologist, will present a very interesting presentation while surrounded by Trip Coordinators just waiting for you to sign up and join them in the mountains.

The December meeting will cap off this year with loads of fun. Practice your smile because Ron Hayes, Judy Schiro, and Morris Covin will be our photographers for Space City's first smile booth! Dress up in your holiday best, don a Dr. Seuss hat, add large glasses, and SMILE because they'll have their cameras ready to capture your image.

Speaking of images, we're having another photo contest this year. The categories are: BEST SELFIE, MOST ORIGINAL LANDSCAPE, SKI ACTION, PEOPLE, & LOCAL TOWN.

Does all of this sound fun and exciting? We can do this because our club has great volunteers who donate much of their time to ensure you have a wonderful travel season. Our very important Nominating Committee is busy at work interviewing potential candidates for the 2015-2016 season. Please seriously consider volunteering in a leadership position on our Executive Committee because our club cannot function without it. It is very rewarding and you will find yourself making many new friends. Finally, I would like to thank Jim Hodges for stepping up to the plate and agreeing to volunteer as VP of Trips this year. Susan Blome had to step down for personal reasons. Thank you, Susan, for all you have done!



Keep checking the Sitzmarke, [Spacecity.org](http://Spacecity.org), [Facebook.com/spacecityskiclub](https://Facebook.com/spacecityskiclub), and [Meetup.com/spacecity](https://Meetup.com/spacecity) for club information so you don't miss out on the meetings and trips planned this season.

I look forward to visiting with you at our September 8th meeting at the Hess Club.

## **Melinda Hughes,** *President*

### **Countdown to Liftoff**

Online trip sign-up began August 15 with a bang! By the end of the first weekend of signup, we had over 120 participants signed up for nine different trips. Our two trips to Italy (Winter Expedition to Madesimo and Summer Expedition to Tuscany) accounted for 25 of the early signups. Space City loves its international trips! Speaking of international trips, the 2014 Summer Expedition trip to South Africa leaves in a few weeks. I expect there are very excited people preparing for the trip of a lifetime.

Monday, September 8 will be the first General Meeting since we opened trip signup for the 2014-2015 season. This is always a special meeting because it is the first opportunity most of our members have to visit with the Trip Coordinators and Assistant Trip Coordinators for each of the trips. It is also when most of our members start to make a decision on which trip to choose. We have a great selection of trips planned for next season and the TCs/ATCs are looking forward to telling you what they have planned to make your next ski trip one of the best ever. The hard part may be deciding which trip (or trips!) you want to join. You will have a choice of ski trips to 4 different states (New Mexico, Colorado, California, and Montana) or to an international destination (Madesimo, Italy). If you love traveling with the club but not necessarily to

ski, you might consider the Summer Expedition trip to Tuscany, Italy. I wish I could go on all of our trips; unfortunately I am still waiting for the elusive winning lottery ticket to come my way!

If you are looking for a trip to go on, visit our website at [www.spacecity.org](http://www.spacecity.org) to see the trips offered and the current status. Then plan to attend the September General Meeting and visit in person with our trip leaders. After visiting with the trip leaders, you will be able to choose a trip and sign up during the meeting, so do not forget to bring your checkbook. Signing up requires payment of a deposit (\$150 for a domestic trip; \$300 for Madesimo; \$490 for Tuscany full package). Details of the final payment due date are listed on the club website but generally it is due about 90 days before departure.

I look forward to another great year of skiing and traveling with the Space City Ski & Adventure Club!



**Jim Hodges**  
*VP of Trips*

## Trips 2014-2015

Destination	Date	Prices* Full / Land Only	Final Payment Date	Trip Coordinator	Assistant Trip Coordinator
<b>Vail, CO Club Long</b>	Dec 6 – 13 2014	\$1,203 (Land Only)	15-Oct	Bob Olsen	-
<b>Vail, CO Club Short</b>	Dec 6 – 10 2014	\$776 (Land Only)	15-Oct	Bob Olsen	-
<b>Beaver Creek, CO TSC Winter Traditional</b>	Jan 10 – 17 2015	\$1,130/\$858	19-Oct	Anne Thomas	Kate MacDougal
<b>Beaver Creek, CO Club Short</b>	Jan 14 – 18 2015	\$610 (Land Only)	19-Oct	Anne Thomas	Patti Finch
<b>Madesimo, Italy TSC Winter Expedition</b>	Jan 23 – 31 2015	\$2,313/\$1,282	13-Oct	Barbara Brescian	Sandy Schneider
<b>Mammoth, CA TSC Winter Shootout</b>	Jan 31 – Feb 7 2015	\$1,626/\$1,066	24-Oct	Dave Stotz	-
<b>Taos, NM Club Long</b>	Feb 14 – 21 2015	\$1,060 (Land Only)	10-Nov	Chris Bryan	-
<b>Taos, NM Club Short</b>	Feb 14 – 18 2015	\$693 (Land Only)	10-Nov	Chris Bryan	-
<b>Whitefish, MT Club Trip</b>	Feb 21 – 28 2015	\$1,442/\$689	21-Nov	Derek Shoobridge	Andy Smith
<b>Breckenridge TSC Final Showdown</b>	Feb 28 – Mar 7 2015	\$1,330/\$902	17-Dec	Steve Ying	Cindy Moore
<b>Breckenridge TSC Final Showdown Short</b>	Feb 28 – Mar 4 2015 (4 Day)	\$644 (Land Only)	17-Dec	Steve Ying	Cindy Moore
<b>Breckenridge TSC Final Showdown Short</b>	Feb 28 – Mar 5 2015 (5 Day)	\$753 (Land Only)	17-Dec	Steve Ying	Cindy Moore
<b>Breckenridge Spring Break trip</b>	Mar 14 – 21 2015	\$1,018 (Land Only)	12-Jan	Tony Curry	-
<b>Discover Tuscany TSC Summer Expedition</b>	Oct 29 – Nov 7 2015	\$3,799/\$2,469	1-July	Maria Mendez	Leyla Ozkardesh

**\* Published prices are before cash discount.**

Information shown on this Trip Schedule is subject to change. Contact the Trip Coordinator (TC) or Assistant Trip Coordinator (ATC) for the most up-to-date information.

PRICING: FULL packages include air, all transfers, and per person lodging based on double-occupancy. LAND ONLY packages do not include air. Published prices do not include baggage fees, equipment rentals or lift tickets, and are subject to change. All trip deposits can be made by check or by PayPal; however, final payment must be made by check to receive the 'Cash Price'. Trips frequently have optional activities, such as a group dinner, or offer pre- and post-trip segments that are not reflected in the price published above. The TC is your source of information as to what is included in the package price and the cost of available options. Each trip has a different 'final refund' date -- that is the last date you can withdraw from the trip without a penalty. Refer to the club's Standing Rules 5.1-5.4 for the governing policies on trips, cancellations, refunds, etc.

DEPOSITS: All trips require a per person deposit to make a reservation.



# SIGN UP - DON'T DELAY.

We have a great list of trips for this coming ski season. Don't procrastinate and miss out on the trip of your dreams. Last season some trips filled up very fast and a few folks were disappointed. Don't let that happen to you. You can send a check or use PayPal.

**Last year this trip sold out in less than a week!!!**



Photo by Fred Pethick



## Vail, CO - CLUB TRIP

LONG - DECEMBER 6 - 13, 2014

SHORT - DECEMBER 6 - 10, 2014

Bob Olsen

[bob@spacecity.org](mailto:bob@spacecity.org)

713-530-9068



Bob Olsen

### PACKAGES OFFERED (Land Only)

PACKAGE	PRICE (Pay by PayPal)	DISCOUNTED PRICE (Pay by Check)
LONG (Dec 6 <sup>th</sup> -Dec13 <sup>th</sup> )	\$1,203	\$1,153
SHORT(Dec 6 <sup>th</sup> -Dec 10 <sup>th</sup> )	\$776	\$741

DEPOSIT: \$150 by check or online via PayPal. FINAL PAYMENT: Due by 10/15/14



Photo by Bob Olsen

## Beaver Creek, CO

### TSC WINTER TRADITIONAL

LONG - JANUARY 10 - 17, 2015

SHORT - JANUARY 14 - 18, 2015

Anne Thomas - TC  
[anne@spacecity.org](mailto:anne@spacecity.org)  
 713-589-3660



*Beaver Creek*



Anne Thomas

Kate MacDougal - ATC long Trip  
[kate@spacecity.org](mailto:kate@spacecity.org)  
 713-253-1853

Patti Finch - ATC Short Trip  
[patti@spacecity.org](mailto:patti@spacecity.org)  
 936-520-1486



Patti Finch



Kate MacDougal

#### WHY CHOOSE THIS TRIP

- Long trip option - 7 nights/up to 6 ski days.
- Short trip option - 4 nights/up to 4 ski days.
- Over 1800 skiable acres with 4,040' vertical drop.
- Terrain for all abilities.
- Upscale Beaver Creek lodging.
- TSC Traditional trip offers lots of extra activities; friends from other TSC ski clubs.

#### PACKAGES OFFERED Long Trip - Jan 10<sup>th</sup>- Jan 17<sup>th</sup>, 2015

PACKAGE	PRICE (Pay by PayPal)	DISCOUNTED PRICE (Pay by Check)
FULL	\$1,130	\$1,080
LAND ONLY	\$858	\$823

#### PACKAGES OFFERED Short Trip- Jan 14<sup>th</sup> - Jan 18<sup>th</sup>, 2015

PACKAGE	PRICE (Pay by PayPal)	DISCOUNTED PRICE (Pay by Check)
LAND ONLY	\$610	\$575

**DEPOSIT: \$150 by check or online via PayPal. FINAL PAYMENT: Due by 10/19/14**

Make the check payable to 'SCSC' & mail to 'P.O. Box 22567, Houston TX 77227' write *trip name on the check & on the outside of the envelope*. Online payments using PayPal are available.



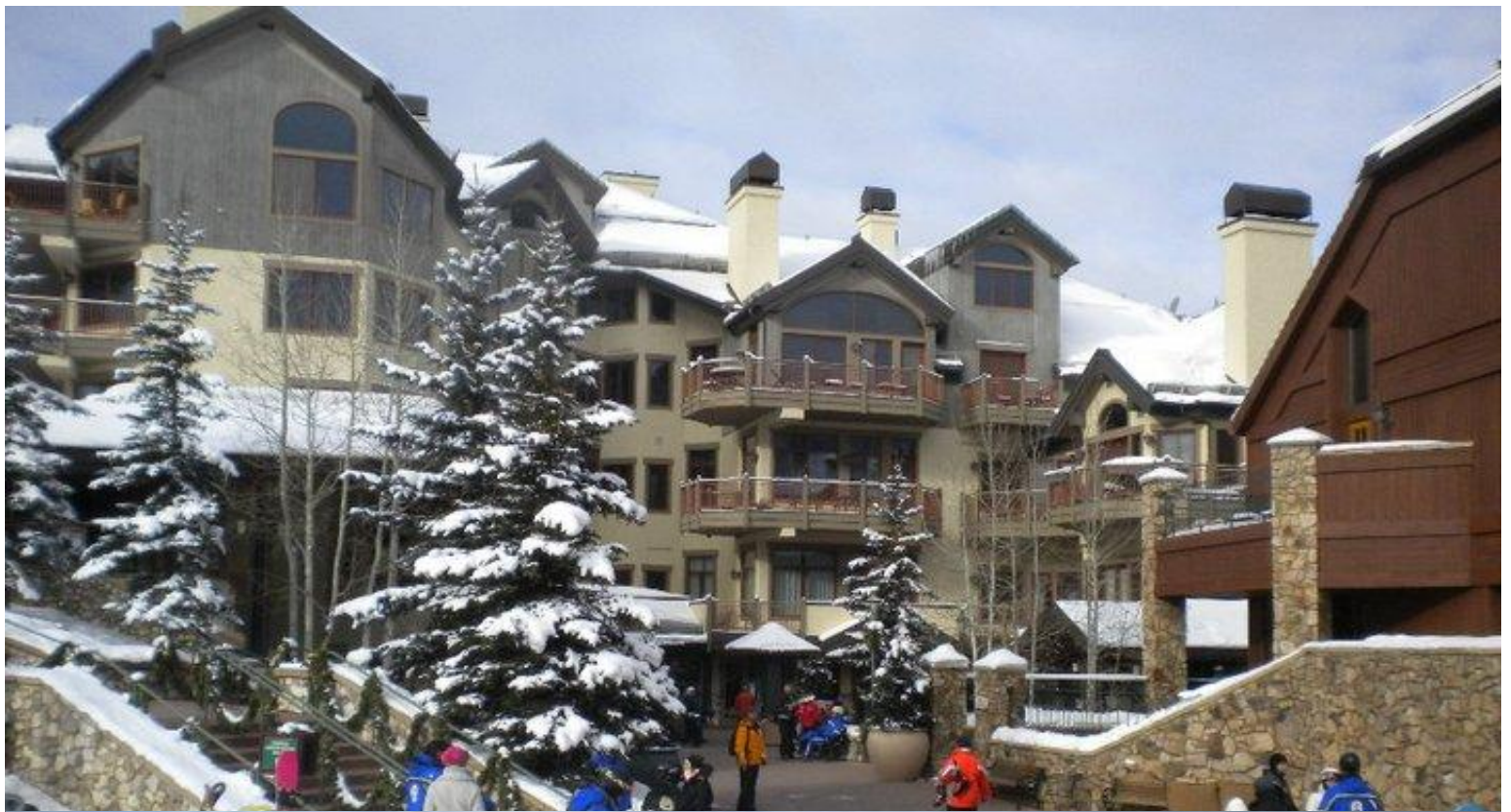


Photo by Tom Thomas



**Madesimo, Italy – TSC WINTER EXPEDITION**

JANUARY 23 - 31, 2015

Barbara Brescian

[barbara@spacecity.org](mailto:barbara@spacecity.org)

713-516-5322

**Barbara Brescian**

Sandy Schneider

[sandy@spacecity.org](mailto:sandy@spacecity.org)

281-870-1789

**Sandy Schneider****WHY CHOOSE THIS TRIP**

- Savor the tastes, sounds and skiing of the Italian Alps.
- Terrain for all abilities with runs leading to the village.
- Daily breakfast/dinner included plus lift tickets ½ of US prices.
- 4-star hotel with heated indoor pool and wellness center.

**PACKAGES OFFERED Jan 23<sup>rd</sup> – Jan 31<sup>st</sup>, 2015**

<b>PACKAGE</b>	<b>PRICE (Pay by PayPal)</b>	<b>DISCOUNTED PRICE (Pay by Check)</b>
<b>FULL</b>	\$2,313	\$2,248
<b>LAND ONLY</b>	\$1,282	\$1,232

**DEPOSIT: \$300 by check or online via PayPal. FINAL PAYMENT: Due by 10/13/14**

Make the check payable to 'SCSC' & mail to 'P.O. Box 22567, Houston TX 77227' write *trip name on the check & on the outside of the envelope*. Online payments using PayPal are available.





# Mammoth, CA – TSC WINTER SHOOTOUT

JANUARY 31 – FEBRUARY 7, 2015

Dave Stotz

[dave@spacecity.org](mailto:dave@spacecity.org)

713-862-9486

  
Mammoth



Dave Stotz

## WHY CHOOSE THIS TRIP

- Ski-in, ski-out lodging at Juniper Springs Condos.
- TSC Winter Shootout includes multiple activities.
- Terrain for all abilities.

## PACKAGES OFFERED Jan 31<sup>st</sup> – Feb 7<sup>th</sup>, 2015

PACKAGE	PRICE (Pay by PayPal)	DISCOUNTED PRICE (Pay by Check)
FULL	\$1,626	\$1,576
LAND ONLY	\$1,066	\$1,031

DEPOSIT: \$150 by check or online via PayPal. FINAL PAYMENT: Due by 10/24/14



## Taos, NM – CLUB TRIP

LONG – FEBRUARY 14 - 21, 2015

SHORT – FEBRUARY 14 – 18, 2015

Chris Bryan

[chris@spacecity.org](mailto:chris@spacecity.org)

281-827-6790

# TAOS



Chris Bryan

### WHY CHOOSE THIS TRIP

- Short & long options available.
- President's Day Week - take fewer vacation days to ski more.
- Taos offers 'Ski Week' - you'll ski better for the rest of your life.
- Terrain for all abilities & New Runs.
- Exciting new lift to the 12,450 ft. Kachina Peak – no more hiking to the backside!

---

### PACKAGES OFFERED Long Trip Feb 14<sup>th</sup> – Feb 21<sup>st</sup>, 2015

PACKAGE	PRICE (Pay by PayPal)	DISCOUNTED PRICE (Pay by Check)
LAND ONLY	\$1,060	\$1,025

### PACKAGES OFFERED Short Trip Feb 14<sup>th</sup> – Feb 18<sup>th</sup>, 2015

PACKAGE	PRICE (Pay by PayPal)	DISCOUNTED PRICE (Pay by Check)
LAND ONLY	\$693	\$658

**DEPOSIT: \$150 by check or online via PayPal. FINAL PAYMENT: Due by 10/24/14**

**Make the check payable to 'SCSC' & mail to 'P.O. Box 22567, Houston TX 77227' write *trip name on the check & on the outside of the envelope*. Online payments using PayPal are available.**







## Whitefish, MT – CLUB TRIP

FEBRUARY 21 – 28, 2015

Derek Shoobridge  
[derek@spacecity.org](mailto:derek@spacecity.org)  
713-501-1032

Andy Smith  
[andy@spacecity.org](mailto:andy@spacecity.org)  
361-463-8776



Derek Shoobridge



Andy Smith

### WHY CHOOSE THIS TRIP

- Great skiing with uncrowded slopes.
- Luxury ski-in/ski-out condominium accommodations.
- Northern Montana-- low elevation skiing – base is below 4500'.
- Terrain for all abilities, including many bowls and tree runs.
- Optional day trip to Fernie Alpine Resort in Canada

### PACKAGES OFFERED Feb 21<sup>st</sup> – Feb 28<sup>th</sup>, 2015

PACKAGE	PRICE (Pay by PayPal)	DISCOUNTED PRICE (Pay by Check)
FULL	\$1,442	\$1,392
LAND ONLY	\$689	\$654

**DEPOSIT:** \$150 by check or online via PayPal. **FINAL PAYMENT:** Due by 11/21/14

Make the check payable to 'SCSC' & mail to 'P.O. Box 22567, Houston TX 77227' write *trip name on the check & on the outside of the envelope*. Online payments using PayPal are available.





**Breckenridge, CO - TSC FINAL SHOWDOWN**

LONG - FEBRUARY 28 - MARCH 7, 2015

SHORT - 4 DAY - FEBRUARY 28 - MARCH 4, 2015

SHORT - 5 DAY - FEBRUARY 28 - MARCH 5, 2015

Steve Ying - TC

[steve@spacecity.org](mailto:steve@spacecity.org)

281-433-4122

**Steve Ying**

Cindy Moore - ATC

[cindy@spacecity.org](mailto:cindy@spacecity.org)

713-628-7613

**Cindy Moore****WHY CHOOSE THIS TRIP**

- "Peak 6" is new for 2014.
- 543 additional acres of high alpine intermediate bowl skiing.
- Short lift lines! - Four six pack high speed lifts (the most in Colorado).
- Ski-in/Shuttle-out lodging one block from Main Street.
- Awesome terrain for every skill level.

**PACKAGES OFFERED Long Trip: Feb 28<sup>th</sup> - Mar 7<sup>th</sup>, 2015**

PACKAGE	PRICE (Pay by PayPal)	DISCOUNTED PRICE (Pay by Check)
FULL	\$1,330	\$1,280
LAND ONLY	\$902	\$867

**PACKAGES OFFERED Short Trip: Feb 28<sup>th</sup> - Mar 4<sup>th</sup>, 2015 (4 Day)**

PACKAGE	PRICE (Pay by PayPal)	DISCOUNTED PRICE (Pay by Check)
LAND ONLY	\$644	\$609

**PACKAGES OFFERED Short Trip: Feb 28<sup>th</sup> - Mar 5<sup>th</sup>, 2015 (5 Day)**

PACKAGE	PRICE (Pay by PayPal)	DISCOUNTED PRICE (Pay by Check)
LAND ONLY	\$753	\$718

**DEPOSIT: \$150 by check or online via PayPal. FINAL PAYMENT: Due by 12/17/14**

**Make the check payable to 'SCSC' & mail to 'P.O. Box 22567, Houston TX 77227' write trip name on the check & on the outside of the envelope. Online payments using PayPal are available.**





Photo by Jeff Andrew, Vail Resort



Photo by Liam Doran, Vail Resort

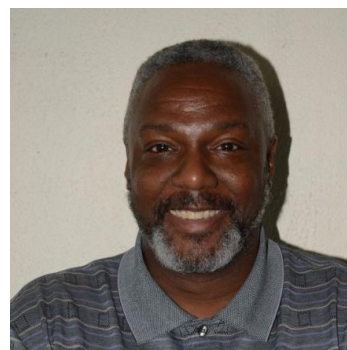
## Breckenridge, CO - SPRING BREAK TRIP

MARCH 14 -21, 2015

Tony Curry

[tony@spacecity.org](mailto:tony@spacecity.org)

281-773-9016



Tony Curry

### WHY CHOOSE THIS TRIP

- Spring Break Week - With youngsters out of school for the week, take your children/grandkids, nieces/nephews on a memorable ski vacation to the Snow Country of the Rocky Mountains.
- Got Scouts? Cub Scouts & Boy Scouts can earn a Snow Sports Merit Badge.
- Breckenridge Ski Resort offers terrain for all abilities.

---

### PACKAGES OFFERED Mar 14<sup>th</sup> - Mar 21<sup>st</sup>, 2015

PACKAGE	PRICE (Pay by PayPal)	DISCOUNTED PRICE (Pay by Check)
LAND ONLY (Adult Price)	\$1,018	\$983

**DEPOSIT:** \$150 by check or online via PayPal. **FINAL PAYMENT:** Due by 1/12/2015

Make the check payable to 'SCSC' & mail to 'P.O. Box 22567, Houston TX 77227' write *trip name on the check & on the outside of the envelope*. Online payments using PayPal are available.





## Discover Tuscany, Italy

### TSC SUMMER EXPEDITION

OCTOBER 29<sup>th</sup> – NOVEMBER 7<sup>th</sup>, 2015

Maria Mendez  
[maria@spacecity.org](mailto:maria@spacecity.org)  
281-797-7084

# TUSCANY



**Maria Mendez**

Leyla Ozkardeh  
[leyla@spacecity.org](mailto:leyla@spacecity.org)  
281-785-2325

#### WHY CHOOSE THIS TRIP

- Trip of a Lifetime – check this one off your “Bucket List”.
- Gorgeous rolling landscapes and stunning architecture.
- Magnificent historic monuments, mouth-watering cuisine and wines.
- 1<sup>st</sup> Class and Deluxe hotel accommodations. Door to Door pick up to/from your home to airport within a 50 mile radius.

---

#### PACKAGES OFFERED Oct 29<sup>th</sup> – Nov 7<sup>th</sup>, 2015

PACKAGE	PRICE
FULL	\$3,799
LAND ONLY	\$2,469

**DEPOSIT:** Full package \$490 / Land Package \$370 - paid by check or online via PayPal.

**FINAL PAYMENT:** Due by 07/01/2015. Last date for full refund less club cancellation fee: March 1, 2015.

Optional travel insurance protection is available for an additional \$270 and must be paid before Nov 15, 2014. Trip price is subject to change if there is an increase in fuel surcharges by the airline. **Final payments** will be made directly to the Travel Agency (Collette) by check or credit card.

**Make the check payable to 'SCSC' & mail to 'P.O. Box 22567, Houston TX 77227' write *trip name on the check & on the outside of the envelope*. Online payments using PayPal are available.**







## THE ART OF TRIP SIGN-UP AND THE FINE PRINT

Trip Sign-Up: HERE IT IS! Your chance to sign-up for your favorite SCSC ski trip(s) for 2014-2015. The trip registration form is in the back of this issue of the Sitzmarke and online. Go to [www.spacecity.org](http://www.spacecity.org) to sign up online starting August 15th and pay your deposit using PayPal, or you may follow up your online registration by mailing a check to the TC. You also have the option of sending your trip registration form by USPS mail; however, the envelope can be postmarked no earlier than August 15 and you will need to wait for the trip TC to notify you if you are on the trip or come to the September General Meeting to verify your registration.

1. Trip sign-ups began August 15, 2014. We take sign-ups in three ways: 1) mail your trip registration form and deposit payment or 2) give your registration form and deposit payment directly to the trip TC at an SCSC event or 3) signup online and pay your deposit by PayPal. If you sign up by mail, make the check payable to 'SCSC' & mail to P.O. Box 22567, Houston TX 77227. Write trip name on the check & on the outside of the envelope. The envelope cannot be postmarked prior to August 15. Any signup postmarked prior to August 15 will be at the back of the line of day one sign-ups if it becomes necessary to determine the order that registrations were received.
2. You must be a current member in good standing to be added to a trip. Contact Ali Pethick, VP of Membership ([membership@spacecity.org](mailto:membership@spacecity.org)), if you have questions regarding your membership status.
3. You may sign up yourself and one other SCSC member per trip (plus children for Family Optional trips) (see by-law 2.8.A.)
4. If you choose to register by mail, include the trip registration form with your deposit. The deposit for Madesimo, Italy is \$300 per participant. The deposit for Tuscany, Italy is \$490 per participant for the Full Package and \$370 per participant for the Land Package. The deposit on all other trips is \$150 per participant. Checks are to be made payable to 'SCSC' and write the TRIP NAME in the memo field on your check.
5. If you choose registration by mail, mail your trip registration form and check to the TC listed for that trip. Additional information, TC telephone numbers and e-mail addresses, is listed in this Sitzmarke.
6. If the registration meets the above guidelines, your name(s) will be added to each trip's Participant List in the order received. If a trip's participant roster is full, additional registrations received will be added to a waitlist in the order received. The TC will hold deposit checks for waitlisted members until a space becomes available on the trip. For the participants that are confirmed on the trips, the checks will be deposited immediately.
7. These procedures apply to ALL members (except the trip's TC and ATC) and all trip participants are subject to SCSC Standing Rules, Policies and Procedures.
8. SCSC is not responsible for any problems with the U.S. Postal Service or the internet, including delayed delivery or lost mail.
9. Information shown on the Trip Schedule is subject to change. Contact the TC or ATC for up-to-date information.
10. Any registrations received which do not meet the above qualifications, may be returned to the sender.
11. Land packages have been approved by The Executive Committee for this year's trips. On the trips which have a limited number of available land packages, if all are filled, you will be given the option of being on a "Land Wait List" or switching to a full package.
12. Because of the restrictions noted below for land packages, be sure you have concrete travel arrangements made before you sign up for one of these. SCSC will not be responsible for any difficulties or extra expense you incur due to delayed or canceled flights or other transportation problems.

### Rules and Restrictions for Land Packages

13. The price of the land package will be the full trip price minus participant's airfare. Ground transportation will be included and available on selected trips to land package participants if they can



meet the group at the destination airport on time. Ground transportation will not be delayed for land package participants arriving later than the group.

14. Other than the full package, this is the only package price available; no other combinations of lodging and/or transportation will be offered. Note: As in the past, members may "Shadow" a trip by arranging their own transportation, lodging, etc., and pay only for the parties and trip options. Please arrange to do this in advance as some of the trip options (group dinners, parties, and lift tickets) are reserved well in advance of the departure date.
15. Normal cancellation policies apply: 1) the added stipulation that, on or after final payment date, land package participants must be replaced from a land package wait list and full package participants must be replaced from a full package wait list in order to receive a refund.
16. Be sure this is the package you want - It may not be possible to convert your trip from land package to full package, or vice versa. The Club may not be able to secure additional airline seats.
17. If you sign up for a land package, please notify the TC of your transportation plans in advance of the trip. The TC can tell you where to meet the group at the airport and other pertinent details.

## Trip Registration Form

**FOR USE BY SCSC MEMBERS ONLY**

**(Complete ONE Registration Form and prepare ONE deposit check PER trip)**

**Deposit (per participant) is \$150 for domestic trips, \$300 for Madesimo, Italy, and for Tuscany, Italy: Full Package \$490/ Land Package \$370.**

**Make the check payable to 'SCSC' & mail to P.O. Box 22567, Houston TX 77227. Write trip name on the check & on the outside of the envelope. Each envelope must contain the registration form and deposit.**

**PLEASE PRINT CLEARLY - WE MUST BE ABLE TO READ THE DATA ON THIS FORM**

Trip Name: \_\_\_\_\_ Trip Dates \_\_\_\_\_ to \_\_\_\_\_

### Participant #1

### Participant #2

Name: \_\_\_\_\_

Name: \_\_\_\_\_

Address: \_\_\_\_\_

Address: \_\_\_\_\_

City \_\_\_\_\_ Zip \_\_\_\_\_

City \_\_\_\_\_ Zip \_\_\_\_\_

Phone(H) \_\_\_\_\_ (W) \_\_\_\_\_

Phone(H) \_\_\_\_\_ (W) \_\_\_\_\_

Cell \_\_\_\_\_

Cell \_\_\_\_\_

E-Mail \_\_\_\_\_

E-Mail \_\_\_\_\_

**Please check one:**

Full package ☐ Land package ☐

**Please check one:**

Full package ☐ Land package ☐

**Note for Full Package participants:** Trip price includes all current air taxes & fuel surcharges subject to change until ticketed. Does NOT INCLUDE any additional fees imposed by the airline such as baggage fees.

**Note for Land Package participants:** Ground transportation will be included and available, on selected trips, to land package participants if they can meet the group at the destination airport on time. Ground transportation will not be delayed for land package participants arriving later than the group.

I understand the following (per standing rules 5.1 - 5.4): Cancellations after trip sign-up must be *in writing* to the Trip Coordinator and all cancellations are subject to a \$30 per person cancellation fee. If I cancel on or after the final payment date, I may forfeit the full amount paid if I cannot be replaced on the trip. For Tuscany, Italy the final *refund* date is March 1, 2015. After that date \$250 of the deposit plus club cancellation fee is non-refundable

Signature(s) (Required) \_\_\_\_\_

## Having a Blast

A big thanks to Jo Barrie not only for coordinating the bowling activity for us last month but also for arranging the Happy Hour at Katch 22.

We also rocked out to the AC/DC concert at the Miller Outdoor Theatre under the stars. If you missed this concert we are planning another activity at the Miller Outdoor Theatre in the next few months. Check our web site for more information and also future activities.

I'm so excited to announce that we have some new members volunteering as activity coordinators for future activities. Lynda Broussard will be the activity coordinator for the Stages Theatre production of "Full Gallop" on September 13th. We have a limited number of reduced price tickets so please sign up on line or email her at [activities@spacecity.org](mailto:activities@spacecity.org).

Rudi Peterson will be the activity coordinator for the Polo Match at the Houston Polo Club on September 14th. The Polo Club is offering us a great price on tickets. It's sure to be a fun afternoon.



The Happy Hour will be on the patio at Cedar Creek Cafe in the Heights on Thursday September 25<sup>th</sup> at 5:30pm. Please access our website at [www.spacecity.org](http://www.spacecity.org) to sign up for activities or to get more information.

## Gayle Dale *VP of Activities*

## Upcoming Activities

### September

September 13<sup>th</sup> - Stages Theater - "Full Gallop"

September 14<sup>th</sup> - Polo Match at the Houston Polo Club

September 25<sup>th</sup> - Happy Hour at Cedar Creek

### October

October 11<sup>th</sup> - Track 21 Go Carts & the Cellar Door

October 23<sup>rd</sup> - Happy Hour

### November

### December

December - Singing at the Mucky Duck

December 20<sup>th</sup> - Christmas Gala

### January

January 18<sup>th</sup> - Chevron Marathon

### February

February 6<sup>th</sup> - Mardi Gras Umbrella Parade



## Stages Theatre "Full Gallop"

Saturday, September 13<sup>th</sup> 2014,  
8:00pm – 10:30pm



We always have fun at any theater event. Come join us to see "Full Gallop", which is returning to the theater by popular demand (which tells you how good you can expect this performance to be).

With her style and humor, Sally Edmundson projects "oomph and joie de vivre" in her portrayal of Diana Vreeland, the former editor of Vogue Magazine who was an icon of American style.

Optional dinner at 6:00 p.m. at Tila's Restaurant and Bar on 1111 S. Shepherd

Where: Stages Repertory Theatre  
3201 Allen Parkway

Fee: \$41-Member  
\$44-Non-member

Coordinator: Lynda Broussard

## Polo Match

Sunday, September 14<sup>th</sup> 2014  
5:00pm – 7:00pm



Located just minutes from The Galleria and Downtown, the club is situated on 26 beautifully landscaped and wooded acres.

Ruth's Chris serves at both the Grandstand & Lawn. Nothing Bundt Cakes is also serving their delicate and delicious cakes for your mid-match sweet tooth. Free Parking.

Complimentary champagne is offered at halftime for stomping divots. Ladies typically wear frilly dresses or bold separates that coordinate with their accessories & men wear a dressy casual.

Where: At Houston Polo Club  
8552 Memorial Drive

Fee: \$15-Member  
\$18-Non-member

Coordinator: Rudi Peterson

## Membership

If you have not renewed your membership, you cannot sign up for a trip. You also can no longer renew on line. Please send a check to SCSC POB 22567, Houston, TX 77227 to renew or join. If you have already paid and are having problems accessing the website, please contact Ali Pethick, VP of Membership at [membership@spacecity.org](mailto:membership@spacecity.org). You can also give us your check at our Kickoff Meeting at the Hess Club, 5430 Westheimer on September 8th when you sign up for trips.

## Member Profile – Lynda Broussard

I met Lynda several weeks ago when she responded to our “Desperately Seeking Activity Leaders” email blast. She replied that she would be happy to help with a theatre event. I referred her to Gayle Dale, our VP of Activities who was seeking someone to lead an event. The next day she sent me a flyer to look at. She is the Activity Coordinator for the September 13th adventure to Stages Repertory Theatre to see “Full Gallop” and had designed a most inviting flyer for her event. This is what you call “getting involved” and following through.

Lynda’s first ski trip was to Purgatory, Colorado in 1979 and that marked the beginning of her enchantment with the sport. “Skiing provides an exhilarating feeling of

freedom, satisfies my love of the outdoors and my appreciation for the beauty of nature” Lynda says.

Lynda has managed to fit in a ski trip almost every season since that first one including trips to: Kitzbuhel, Austria; Mont Saint-Sauveur outside Montreal; Heavenly and Squaw Valley in California; Aspen, Buttermilk, Arapahoe Basin, Beaver Creek, Breckenridge, Keystone, Vail, Winter Park in Colorado; in Utah – Alta, Deer Valley Park City, Snowbird; in New Mexico – Angle Fire, Taos.

This past New Year’s Day she skied the first time in Santa Fe and loved the experience – except for the fact that there was no cell phone service so it was difficult to catch up with friends. She also skied Crested Butte in March.

Lynda owns a B2B marketing and corporate event planning firm for seasonal projects. This allows her time to indulge in her favorite sport of skiing, and other favorite endeavors





such as travel and theatre. Her love of the theatre has taken her to New York City for Broadway shows most years in early December to enjoy the festive holiday spirit of the Big Apple.

Her love of theatre also prompted her to get involved as Activity Coordinator for SCSC's September 13th adventure to Stages Repertory Theatre to see Full Gallop, the story of famed fashion icon Diana Vreeland, former editor of Vogue Magazine. The SCSC theatre night will also include another of Lynda's favorite activities – dining out! – with an optional dinner before the play at Tila's Restaurant & Bar.

Lynda is excited to meet members and join the fun at Space City Ski and Adventure Club and we are happy to have her. Thanks Lynda! What more could we ask? – Perhaps your company on a ski trip.

Looking forward to that.



**Ali Pethick**  
*VP of Membership*

## SCSC Photo Contest 2014-2015

1. BEST SELFIE
2. ORIGINAL LANDSCAPE
3. SKI ACTION
4. PEOPLE
5. LOCAL TOWN

Send photos to  
[marketing@spacecity.org](mailto:marketing@spacecity.org)

## Join the conversation!!!

Have something interesting to contribute? Share with fellow SCSC members your thoughts, experiences, memories of trips and activities. We'd love to hear from you!

Send articles, essays or photos to  
[marketing@spacecity.org](mailto:marketing@spacecity.org)

## Member's Corner







## Our Leadership Team 2014-2015

President	-	Melinda Hughes	<a href="mailto:president@spacecity.org">president@spacecity.org</a>
VP of Activities	-	Gayle Dale	<a href="mailto:activities@spacecity.org">activities@spacecity.org</a>
VP of Trips	-	Jim Hodges	<a href="mailto:trips@spacecity.org">trips@spacecity.org</a>
VP of Membership	-	Ali Pethick	<a href="mailto:membership@spacecity.org">membership@spacecity.org</a>
VP of Marketing	-	Bobby Goel	<a href="mailto:marketing@spacecity.org">marketing@spacecity.org</a>
Treasurer	-	Marti Turner	<a href="mailto:treasurer@spacecity.org">treasurer@spacecity.org</a>
Secretary	-	Sandy Fowler	<a href="mailto:secretary@spacecity.org">secretary@spacecity.org</a>
Auditor	-	Keith Kirkman	<a href="mailto:auditor@spacecity.org">auditor@spacecity.org</a>
Director of Trips	-	George Lopez	<a href="mailto:george@spacecity.org">george@spacecity.org</a>
Director of Trips	-	Bill Bomberger	<a href="mailto:bill@spacecity.org">bill@spacecity.org</a>

## Our Board of Directors 2014-2015

Chairperson	-	Sandra McCunis	<a href="mailto:sandra@spacecity.org">sandra@spacecity.org</a>
Director	-	Ross Baker	<a href="mailto:ross@spacecity.org">ross@spacecity.org</a>
Director	-	Bill Bomberger	<a href="mailto:bill@spacecity.org">bill@spacecity.org</a>
Director	-	David Cone	<a href="mailto:david@spacecity.org">david@spacecity.org</a>
Director	-	Jan Ferrell	<a href="mailto:jan@spacecity.org">jan@spacecity.org</a>
Director	-	Lynda Meyer	<a href="mailto:lynda@spacecity.org">lynda@spacecity.org</a>
Director	-	Ann Rogers	<a href="mailto:ann@spacecity.org">ann@spacecity.org</a>

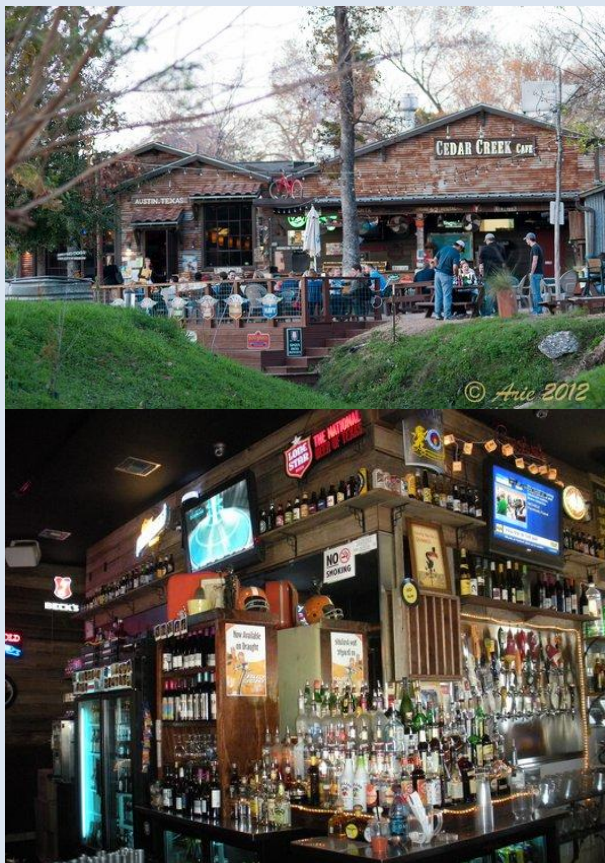


## September Happy Hour

*Thursday, September 25<sup>th</sup>  
5:30 – 8:30 pm*

### **Cedar Creek Café, Bar & Grill**

1034 W 20th St, Houston, TX 77008  
Ph: 713-808-9623



**DOWN BY THE CREEK!**  
In the Heights/Shady Acres  
neighborhood  
Cedar Creek caters to an eclectic  
crowd looking to relax and enjoy  
quality cocktails, beer and grub.  
Texas Spirits + Craft Beer + Cocktail

## Sitzmarke

### **PUBLISHER**

SPACE CITY SKI & ADVENTURE CLUB

### **EDITORIAL**

Editor: Bobby Goel

Email: [marketing@spacecity.org](mailto:marketing@spacecity.org)

Managing Editor: Sandy Fowler

Email: [secretary@spacecity.org](mailto:secretary@spacecity.org)

### **CONTRIBUTORS**

Melinda Hughes, Jim Hodges, Gayle Dale, &  
Ali Pethick .

### **COVER PHOTO**

Unknown (Please claim your photo, we will  
credit you in the next edition)

### **ADVERTISING & MEDIA INQUIRIES**

Bobby Goel, [marketing@spacecity.org](mailto:marketing@spacecity.org)

### **SUBSCRIPTIONS**

Members are emailed a link to the Sitzmarke  
each month. Non-members may download the  
newsletter from our website in the About  
Us/Club Documents section on  
[www.spacecity.org](http://www.spacecity.org).

### **GENERAL INQUIRIES**

Space City Ski & Adventure Club  
PO Box 22567  
Houston, TX 77227  
[www.spacecity.org](http://www.spacecity.org)

### **COPYRIGHT**

All material appearing in SITZMARKE is  
copyrighted by SPACE CITY SKI &  
ADVENTURE CLUB unless otherwise stated  
or it may rest with the provider of the  
supplied material. The publisher takes all  
steps to ensure that the information is correct  
at the time of printing, but accepts no  
responsibility or liability for the accuracy of  
any information contained in the text or  
advertisements. Views expressed are not  
necessarily endorsed by the publisher or  
editor.