



The Sitzmarke

SPACE CITY SKI CLUB

www.spacecityskiclub.org

August 2005



**Member
Texas Ski
Council**

Vol. 39 No. 4

THE ART OF TRIP SIGN UP AND THE FINE PRINT

Trip Sign Up: HERE IT IS! Your chance to sign up for your favorite SCSC ski trip(s) for 2005-2006. The signup form is in this issue of the SITZMARKE, so copy it or clip it out and follow the instructions below. See www.spacecityskiclub.org to signup online and pay by credit card. Then, wait for the trip TC to notify you if you are on the trip or come to the September meeting to verify your registration, sign the Trip Release Form and pick up additional information the TC will have for you.

1. Trip signup begins on Saturday, August 13. This year, the sign up does not end in a few weeks and start up again at the September meeting. Instead, it just begins. Another difference is that you can either mail or give your form and money to the TC OR signup online and pay by credit card. However, the form and money cannot be received prior to that date. Any materials received prior to that date will be returned. Note that this is not the postmark, but when the form and money is received.

2. You must be a current member in good standing to be added to a trip. Note that memberships are approved at the monthly Executive Committee meeting. Send in your membership by the first of the month for it to be considered at the meeting. After that, you will have to wait until the next month. Your 2005-2006 membership number should be shown on the mailing label of the SITZMARKE. Call your VP of Membership, Jeannine Jiral, if you have questions.

3. You may signup yourself and one other SCSC member per trip (plus children for Family Optional trips) (see by-law 2.8.A.)

4. In the registration envelope include the trip registration form and your deposit. The deposit for the Finland trip is \$300 per participant. The deposit on all other trips is \$150 per participant. Checks are to be made payable to "SCSC" and should have your membership number and the TRIP NAME listed on the check.

5. Mail your registration to the Address on the Form for the trip on which you wish to participate. TC's names are listed for all trips. For information, telephone numbers and e-mail addresses are listed in this SITZMARKE and on the Trip Registration Form. If your registration is mailed or given to anyone other than the TC, it will be returned to you and you will not be registered for the trip.

6. If the registration meets the above guidelines, names will be added to each trip's Participant List in the order received. If a trip's participant roster fills, additional registrations received will be added to a wait list in the order received. The TC will hold checks for waitlisted members until a space becomes available on the trip. For the participants that are on trips, the checks will be deposited immediately.

7. These procedures apply to ALL members (except the trip's TC and ATC) and all Trip Participants are subject to SCSC Standing Rules, Policies and Procedures.

8. SCSC is not responsible for any problems with the U.S. Postal Service or the internet, including delayed delivery or lost mail.

9. Information shown on the Trip Schedule is subject to change. Contact the TC or ATC for up-to-date information.

10. Any registrations received, which do not meet the above qualifications, may be returned to the sender.

Land Packages: The Executive Committee has approved Land Packages on this year's trips. On the trips which there are a limited number of land packages available, if all are filled, you will be given the option of being on a "Land Wait List" or switching to a full package.

Because of the Restrictions noted below for land packages, be sure you have concrete travel arrangements made before you sign up for one of these. SCSC will not be responsible for any difficulties or extra expense you incur due to delayed or canceled flights or other transportation problems.

Rules and Restrictions for Land Packages

1. The price of the land package will be the full trip price minus participant's airfare. Ground transportation will be included and available, on selected trips, to land package participants if they can meet the group at the destination airport on time. Ground transportation will not be delayed for land package participants arriving later than the group.

2. Other than the full package, this is the only package price available; no other combinations of lodging and/or transportation will be offered. (Note: As in the past, members may still arrange their own transportation, lodging, etc., and pay only for the parties and trip options. If so, please arrange to do this in advance, ideally by the pre-trip meeting.)

3. Normal cancellation policies apply – with the added stipulation that, on or after final payment date, land package participants must be replaced from a land package wait list and full package participants must be replaced from a full package wait list in order to receive a refund.

4. Be sure this is the package you want – It may not be possible to convert your trip from land package to full package, or vice versa. The Club may not be able to secure additional airline seats.

5. If you sign up for a land package, please notify the TC of your transportation plans in advance of the trip. The TC can tell you where to meet the group or other pertinent information.

Next General Meeting - September 12

Chateau Crystale - 2517 S. Gessner (1/2 Block north of Westheimer)

Permit #9036
Houston, TX
PAID
POSTAGE
U.S.
PRSR STD

Houston, TX 77227
P.O. Box 22567
SPACE CITY SKI CLUB



SPACE CITY SKI CLUB 2005-2006 EXECUTIVE COMMITTEE

PRESIDENT.....CINDY MOORE
president@spacecityskiclub.org..... (713) 984-1060

VP-PROGRAMS.....JOSE ARAUJO
vpprograms@spacecityskiclub.org..... (713) 541-6838

VP-TRIPS.....KAYLEEN KILL
Kayleen-kill@houston.rr.com..... (281) 293-9533

VP-MEMBERSHIP.....JEANNINE JIRAL
Jeannine@ev1.net..... (281) 723-6212

VP-PUBLICATIONS.....PAT PIECH
Ppiech48@houston.rr.com..... (281) 531-7650

SECRETARY.....BRENDA SOILEAU
Bgsoileau@aol.com..... (832) 654-0462

TREASURER.....GARY LADD
treasurer@spacecityskiclub.org..... (713) 320-5233

DIRECTOR(S) OF TRIPS

Hope Flynn Patty Finch

DIRECTOR OF COMMUNICATIONS

BRUCE LOWTHER
rblowt@hal-pc.org..... (713) 785-5196

Volunteer for this Appointed Position

AUDITOR

DIRECTOR OF PROGRAMS.....JESSICA HALTER

TSC REPRESENTATIVE.....LEYLA OZKARDESH

TSC ALTERNATE REPRESENTATIVE.....JOHN RICE

RACE DIRECTOR.....ROBERT WRAY

BOARD OF DIRECTORS

Christine March - *Chairman*

Ross Baker • Penny Chancey • Llona Doubet •
Ellen Eastham • Lori Gilliland • Sean O'Brien •
Leyla Ozkardesh • John Rice • Dawn Rodriguez

SITZMARKE STAFF

EDITOR.....Pat Piech

PHOTOGRAPHY.....Ron Hayes, Bruce Lowther

SITZMARKE Published monthly by **SPACE CITY SKI CLUB**

Arranged and Printed by VALLERO MARKETING & DESIGN
Tonja Sanchez (713) 298-5058 article4newsletter@yahoo.com

Join your SCSC friends in the

BAD BLADES ROLLERBLADE GROUP

Every Sunday morning. For the weekly meeting place and time
see www.badblades.org, or contact Susan Austin,
swicker@houston.rr.com or Dale Albritton (713) 776-9080



Dale L. Albritton, DDS, FAGD

6910 Bellaire Blvd, Unit #4 ~ Houston, TX 77074
Tel: (713) 776-9080

Offering Quality Comprehensive Dental Care for Adults & Children ~ Most Insurance Plans Accepted ~ Flexible Appointments ~
Payment Options Available ~ Emergencies Handled Immediately

IN THIS ISSUE

The Art of Trip Sign Up.....	1
Head of the Lifeline.....	3
Programs and Activities.....	4
Calendar of Events.....	4
From the Ski Desk.....	5
Trip Outline: Keystone.....	5
2005-2006 Ski Trip Schedule.....	6
Trip Outline: Vail & Snowbird.....	7
Trip Outline: Steamboat Springs & Big Mountain.....	8
Trip Outline: Aspen & Mammoth Mountain.....	9
Trip Outline: Finland/Sweden/Lapland.....	10
Trip Outline: Big White/Kelowna & Breckenridge.....	11
Trip Registration Form.....	12



RE/MAX
Professional Group
Independently Owned and Operated

Steven Teoh

REALTOR®

Direct: 832-478-1188

Office: 281-894-1000

Fax: 832-201-7541

E-mail: StevenTeoh@remax.net

Web: Best-Houston-Homes.com

RONALD N. HAYES AND ASSOCIATES, P.C. ATTORNEY AT LAW

P.O. Box 801525
HOUSTON, TEXAS 77280-1525
Office (713) 524-7670

(713) 478-4290 Cell (713) 939-0679 FAX
(713) 788-5300 Pager ronhayes@houston.rr.com



BRANT B. WILLIAMS
Agent



River Oaks Bank Building
2001 Kirby Drive, Suite 812
Houston, TX 77019-6033
Bus.: (713) 521-0400
(800) 637-6803
Fax: (713) 521-0430

STATE FARM INSURANCE COMPANIES
HOME OFFICES: BLOOMINGTON, ILLINOIS

"Like a good neighbor, State Farm is there"®



As beads of perspiration trickle down your neck and back in the scorching August Houston heat, are visions of snowflakes dancing in your head? I hope so! If they are, you are in luck, because in this SITZMARKE you will see the articles describing the 13 incredible ski trips for the 2005-2006 SCSC ski season! You will marvel at the array of venues...some as familiar to you as Houston and some exciting territory

you've never explored! Kayleen, Patti and Hope have planned something for everyone this year, including many fabulous short trips for those who have less vacation days or simply want to spread those days out on as many SCSC ski trips as humanly possible! There are also several venues with excellent cross-country skiing. If

you have friends that love cross-country, this is the year they should join us! We are certain that you will find the trip(s) of your dreams, so make sure you will be there by going through early trip signup! Find details on how to do it later in this issue and don't miss Kayleen's article.

But you don't want to wait until ski season to cool off? You want to cool off NOW? You are still in luck, because Jose and Jessica have awesome SCSC activities planned. The On the Water Spectacular Weekend is full of fun, sailing and dancing with members of TASS. It will be an event not to be missed from August 5-7 with AC Barbara Della Longa. And in September, you can fly away to Hawaii with your SCSC friends! It doesn't get any better than that! See Jose's Vice President of Programs article later in this issue for all of the fun things you can do this summer with SCSC. Have a terrific summer. See you at happy hour!



On The Water Spectacular

August 5-7, 2005

Final Payment: July 21, 2005

Friday - Dinner & Party with DJ - Moon

Water Grill @ Waterford Harbor Marina * Saturday - Seabrook Beach

Club - Water Volleyball, Sailing with TASS, Power Boating *

Sunday - Three Course Champagne Brunch & "Blessing of the Fleet" viewing, Poolside Social - Sundance Grill

Co-Sponsored by Space City Ski Club & Texas Association of Single Sailors

Fees apply for each optional activity. Friday dinner/party/DJ \$28 members/\$33 nonmembers; Saturday Seabrook BC \$2 activity fee; Snack : Sails - large vessels out of various marinas \$25 and small boats out of Seabrook BC \$10; 4-hr. charter sails (10 a.m. : 3 p.m.) depart from Waterford Harbor Marina \$55; Power boating out of Seabrook BC (no fee); Sunday brunch \$28 members/\$33 non-members. Check www.spacecityskiclub.org or write the AC for the most current information or to volunteer sailboats/power boats. volunteer sailboats/power boats.

AC Barbara Della Longa (281) 398-7107 bdellalonga@sbcglobal.net or AAC Linda Licarione (713) 468-2816 llicarione@macroenterprises.com



I ♥ Referrals!

P.O. Box 570204

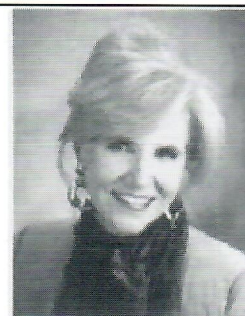
Houston, TX 77257-0204

Office 281/242-6500

Fax 281/242-6515

Pager 713-908-9808

donnakp7@aol.com



Donna Kidwell, CRS, CRB
Broker Associate



C&L Specialties & Screen Printing Co.

LEONA SCHROEDER
PRESIDENT

10621 HARWIN SUITE 318

HOUSTON, TEXAS 77036

713/541-3130

713/771-8742 FAX

Business: candispec@bigplanet.com

QUALITY SCREEN PRINTING

QUALITY EMBROIDERY

AWARDS, TROPHIES, PLAQUES

PROMOTIONAL PRODUCTS

Personal: leonasschi@bigplanet.com

A Night at the Races - Sam Houston Race Park

Friday, August 12

\$8.00 per person

Final Payment Date: 8/10/2005

Contact AC: Craig Campbell (713) 453-5798
craigcam48@aol.com



Safari & Climb Kilimanjaro

Early February, 2006

Contact Arlen Isham

(713) 455-4858

Wanted!! Race Directors and Assistant Race Directors for 2005-2006 Ski Trips

For more information and to volunteer, contact your TC/ATC or SCSC Race Director Bob Wray at (713) 229-1347, rwray@bakerbotts.com

PROGRAMS AND ACTIVITIES

Jose Araujo, VP of Programs
Jessica Halter, Director of Programs



With the heat wave hitting us in the 100's, the best way to beat the heat is at the Water Spectacular weekend on August 5-7! Barbara and Linda have an incredible program that will keep you busy all the weekend!

This month will be special and feature Two Happy Hours! Happy Hour One, on August 11th, will be a "mixer" style and we are going to share with other groups and look to welcome new members. The second Happy Hour, on August 18th, will be a special opportunity to get more details from the Ski trip coordinators on the wonderful trips for the coming season.

As you all know, August marks the beginning of early sign up for the ski trips (see Kayleen's article for details), and in September we move to our new location for the General Meetings. Remember, our new home is Chateau Crystale located at 2517 S. Gessner, just one-half block north of Westheimer.

Jessica is preparing an exciting agenda for our General Meetings as well as ideas for other fun activities. In her own words:

Hellllooooo Houston!!! I'm baaacckkk! I've missed you! After a two year stint to follow my daughter through high school and into college, (she's just finished her first year at University of Denver; thanks for asking!) I am back to get involved once again with SCSC. I am so excited to serve as your '05-'06 Director of Programs. I've been a home-body for about two years and it is TIME TO PARTY! We have some fantastic plans to spice up meetings and create fun times for everyone.

As always, this won't work without you! So VOLUNTEER to do an activity. We will help you in every way possible. I LOVE to plan parties, so just say the word and I will jump in and help make it happen.

In addition to the fun things we usually do (Rodeo, Holiday Gala, Watersports Spectacular, Wine-tastings, Laser Tag, Biking, Hiking, Bowling, Games Night etc.) I would like to see us do more short

weekend trips this year. I'm thinking Wurstfest overnigher, (or any other festival weekends), Renaissance Festival overnigher, Tubing in New Braunfels, Hill Country Fishing and/or Antique Shopping weekend, New Orleans weekend, Lake Charles Gambling fun, maybe even a Vegas trip, Diving Adventures, and whatever else we can come up with. Choose your passion, let us know what you want to do, and we'll help you get a group of fun people together to do it.

In addition to our usual Sunshine Kids donations, I am especially interested in having one part of each meeting focused on giving back to our communities (i.e. bring canned goods one month for the local food bank, organize a pre-meeting blood drive (we'll have to watch the blood alcohol level!! Ha ha!), ongoing Tsunami Relief donations of small supplies, organizing volunteers for YMCA's Big Brother/Big Sister, bringing a bag of pet food to donate to local pet shelters, and any other ideas you may have. I will be asking for teams to help coordinate and deliver the proceeds of our efforts to the receiving organizations and each meeting's donation opportunity will be listed in the Sitz. So if that sort of community service is your thing, or you know of a specific organization in need, please let us know!



We can't do it without activity leaders, so STEP UP and GET INVOLVED. Even if you don't know what activity you'd like to lead, just let us know you want to do an event, and we will help make it happen.

Again, thank you for the opportunity to help make '05-'06 a FANTASTICALLY FUN year full of activities and events.—Jess

For the coming activities, refer to the Calendar of Events in this issue and at www.spacecityskiclub.org. Also, be sure to check your e-mail as there will be short notice activities.

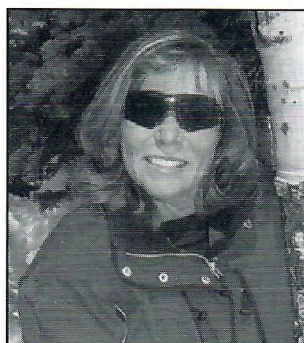
Remember to send me any SCSC past files, memorabilia, documents or items for storage. My evening phone is (713) 541-6838 and my e-mails are vpprograms@spacecityskiclub.org or joseangel888@hotmail.com and Jessica's e-mail is jessicahalter@yahoo.com.

CALENDAR OF EVENTS

Date	Event	Coordinator	Phone	E-mail/Address
AUGUST				
8/5-8/7	Water Spectacular Weekend	Barbara Della Longa	(281) 398-7107	bdellalonga@sbcglobal.net
8/11	Happy Hour—Sullivan's	Jessica Halter	(713) 545-9020	4608 Westheimer
8/12	A Night at the Races—Sam Houston Race Park	Craig Campbell	(713) 453-5798	craigcam48@aol.com
8/18	Happy Hour II—D'Wine Restaurant	Deb Cini	(832) 528-6125	4304 Westheimer @ Mid Lane
SEPTEMBER				
9/8	Happy Hour—Six Degrees Lounge	Deb Cini	(832) 528-6125	dcini@victoria.com
9/10-17	Maui, Hawaii (<i>Space available for single female</i>)	Sean O'Brien	(713) 787-9762	seanobrien1981@sbcglobal.net
9/12	General Meeting—Chateau Crystale	Jessica Halter	(713) 545-9020	2517 S. Gessner
OCTOBER				
10/13	Happy Hour—Red Lion Pub	Deb Cini	(832) 528-6125	dcini@victoria.com
10/17	General Meeting—Chateau Crystale	Jessica Halter	(713) 545-9020	2517 S. Gessner
10/28	Games Night and Halloween party	TBD		
OTHER ACTIVITIES				
12/2	Holiday Gala	TBD		

For the latest updates on events, check out www.spacecityskiclub.org

If you have an idea for an activity or would like to volunteer to be on AC or AAC, contact VP of Programs, Jose Araujo (713) 541-6838 joseangel888@hotmail.com or vpprograms@spacecityskiclub.org, or Director of Programs, Jessica Halter (713) 545-9020 jessicahalter@yahoo.com. For more information or to pass on ideas about Happy Hours, contact Deb Cini (832) 528-6125 dcini@victoria.com.



AT LAST. In this issue we have all the information on how to sign up for trips. The complete trip schedule is provided along with prices and final payment dates. The Trip Coordinators, Assistant Trip Coordinators and DOT's (yes, even the VP of Trips) have been hard at work all summer to bring you a great ski season. Many of those who have seen the preliminary schedule have told me how excited they are about the upcoming trips. I believe it is a great mix of old favorites and

new, exciting places. And a great mix of long and short trips.

The feedback we have gotten from you is that you want quality lodging, close to the lifts. You want the price to reflect the value of the trip rather than trying to go with the cheapest lodging. We feel we have delivered. Many of the trips have ski-in, ski-out lodging or lodging that is a few hundred yards from the lifts.

We also worked hard to provide a number of short trips that maximize your ski time and minimize your vacation time. Most of the short trips will fly out around 5:30 p.m. in the evening so that

you can work most of the day. Many return late in the day, allowing you to ski most of the last day before returning. I know several people that plan to take two or three short trips that normally take one long one. I like hearing that! Although we have published pricing for the trips, additional fuel charges, taxes or currency conversions can change the price of the trip. This happens rarely, but is always a possibility.

As mentioned in previous articles, trip signup will start August 13. This year, it is not "early" trip signup. It is "actual" trip signup and does not end and restart. In addition, we are implementing an online trip signup utilizing PayPal for credit card payments. If you want to sign up by mail, this issue includes the form and information you need.

In order to sign up for a trip you must be a member in good standing. Make sure you have renewed your membership by August 1 to insure you can sign up for trips on August 13. So, read the trip articles, check out the trip dates and prices and then signup by mail or online. If you signup by mail, fill in one form for each trip. Make copies if you sign up for more than one trip. Up to two people can use one form for the same trip. NOTE: signups CANNOT be RECEIVED prior to August 13. They will be returned if they are received earlier. SEE PAGE 6 FOR A LIST OF THE 2005-2006 TRIPS...



KEYSTONE 2005

Fall Round Up - Family Optional

November 22-27, 2005

Full Package: \$666

Land Package: \$456

Round up your skis, cold weather gear, your family and your enthusiasm to hit the slopes on the first ski trip of the season. The Fall Roundup family trip is upon us. This Thanksgiving you will be able to ski for a reasonable price and expend minimum precious vacation time, which makes for maximum enjoyment.

A group of 33 lucky skiers will be leaving Houston at 5:30 p.m. on Tuesday, November 22 on a United Airlines flight direct to Denver, Colorado for a wonderful four full days of skiing and socializing. Upon

arrival, we will board a bus to the Keystone Ski resort with an estimated arrival time at the resort of 11:30 p.m. This includes a one-hour stopover at a grocery store for food. The return flight from Denver leaves at 7:20 p.m. on Sunday, November 27, arriving back to Houston at 10:28 p.m. Since the trip is over a two day holiday period, most people will only have to take one day of vacation.

The group will be staying in two-bedroom condos at the River Run Resort. When you stay at River Run, you can walk to the Gondola and Summit Express lifts. The main plaza in the village is great for shopping, dining and art galleries.

Worried about snow this early in the season? Don't be. Keystone has upgraded their snowmaking system, which increases their snowmaking capacity by 33%. Keystone has one of the highest elevation points at 12,408 feet and gets the earliest snow. Keystone is also famous for it's night skiing.

Since it is Thanksgiving, why not bring your children or grandchildren to Keystone for the Youth Camp. For only \$152, they can have 4 days of lessons, lifts, rentals and lunch. Normally this package costs \$502. And one youth under age 18 can stay free in the same room with two paying adults.

Keystone Resort TSC Fall Roundup Activities includes a welcome reception, two kid's evening activities, the awards dinner/party and many other activities. In addition, there will be a club welcome breakfast and an optional turkey buffet for those who cannot live without turkey on Thanksgiving Day. With this great price, great lodging location, friends and/or family, who can afford not to go?

Make your plans early this year. Also, an added feature is to pay online through Space City Ski Club's PayPal. We would love to have you on our trip.

TC: Louella Steller 713-666-2347
ATC: Laurie Haischer 281-290-9269

LJDMS@aol.com
lhaischer@yahoo.com





Space City Ski Club

2005-2006 Ski Trip Schedule

Dates	Nights/ Ski Days (DOT)	Trip Destination	Final Payment	Trip Price	TC ATC	Home Phone	E-mail Address
Nov 22-27, 2005 (Tues—Sun)	5/4 (PF)	KEYSTONE (TSC Fall Roundup) Family Optional	9/12/05	\$666 L\$456 C\$346	Louella Steller Laurie Haischer	713-666-2347 281-290-9269	ljdm@aol.com lhaischer@yahoo.com
Dec 3-10, 2005 (Sat—Sat)	7/6 (PF)	VAIL	9/20/05	\$771 L\$550	Dana Wardell Judy Schiro	281-497-8552 713-939-8235	dwardell@stalkerenergy.com ronhayes@houston.rr.com
Dec 3-7, 2005 (Sat—Wed)	4/4 (PF)	VAIL – Short	9/20/05	\$623 L\$396	Dana Wardell	281-497-8552	dwardell@stalkerenergy.com
Jan 7-14, 2006 (Sat—Sat)	7/6 (HF)	STEAMBOAT – Long (TSC Traditional)	10/3/05	\$940 L\$609	Thuy Tran Richard Rocque	281-376-0343 281-376-0343	ttran@kmg.com rrocque@entouch.net
Jan 10-15, 2006 (Tues—Sun)	5/4 (HF)	STEAMBOAT – Short (TSC Traditional)	10/3/05	\$740 L\$522	Thuy Tran	281-376-0343	ttran@kmg.com
Jan 21-28, 2006 (Sat—Sat)	7/6 (HF)	MAMMOTH	11/1/05	\$1166 L\$763	Bill Bomberger Sharon Simandl	281-495-8668 713-862-4883	bbomberger@satake-usa.com ssimandl@hotmail.com
Jan 28-Feb 5, 2006 (Sat—Sun)	7/6 (HF)	FINLAND/ STOCKHOLM (TSC Expedition) Family Optional	11/15/05	\$1825 C\$684 or \$705	David Eickhoff Jan Ferrell	713-825-6021 713-266-8222	eickhoff@hal-pc.org ferrellj@sbcglobal.net
Feb 4-11, 2006 (Sat—Sat)	7/6 (PF)	ASPEN	10/13/05	\$1084 L\$750	Jill St. Clair Tom Hogle	713-783-6945 713-256-7800	jstclair@hal-pc.org thogle@aurorafin.com
Feb 11-18, 2006 (Sat—Sat)	7/6 (KK)	BIG WHITE (TSC Winter Shootout)	12/12/05	\$1088	Jerry Montgomery Rita Cardenas	281-437-5467 281-353-2713	jerrymont@houston.rr.com rita.cardenas@bmo.com
Feb 15-19, 2006 (Wed—Sun)	4/3 (KK)	KELOWNA (TSC Winter Shootout)	12/12/05	\$898 L\$491	Jerry Montgomery Mike Mason	281-437-5467	the.monts@worldnet.att.net danceallnight@bigfoot.com
Feb 25-Mar 4, 2006 (Sat—Sat)	7/6 (PF)	SNOWBIRD	12/12/05	\$1097 L\$699	Bruce Baird Leslie Allison	281-496-4661 979-732-3233	bruce2skis@aol.com leslicallison@msn.com
Feb 24-28, 2006 (Fri—Tues)	4/4 (PF)	BRECKENRIDGE	10/17/05	\$560 L\$329	Carol Cain	713-665-8121	cainsug@aol.com
Mar 11-18, 2006 (Sat—Sat)	7/6 (HF)	BIG MOUNTAIN (TSC Final Showdown)	12/7/05	\$1027 L\$599	Bill Brown Bob Gottlieb	281-930-8472	bill.a.brown@shell.com drbob23@houston.rr.com

Mark Your Calendars!

Trip Sign up Starts

AUGUST 13

(Credit Cards accepted -
see www.spacecityskiclub.org)

Vice President of Trips

Kayleen Kill (KK)

(281) 293-9533

kayleen-kill@houston.rr.com

Director of Trips

Hope Flynn (HF)

713-621-5990

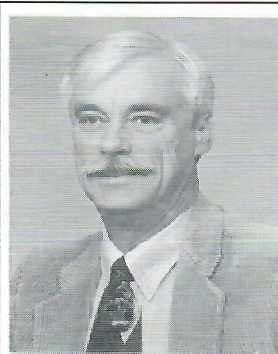
dothope@spacecityskiclub.org

Director of Trips

Patty Finch (PF)

936-271-9715

pfinch@lockeliddell.com



**COUNTRYWIDE
PROPERTIES**

Mike Dawson

Real Estate Broker/Civil Engineer

Phone: (281) 759-6666

Cell: (713) 301-9533

Fax: (281) 759-6668

E-mail: mike.dawson@att.net

11211 Richmond Avenue, B-111
Houston, TX 77082



Dana Unlimited

Jewelry Especially for You

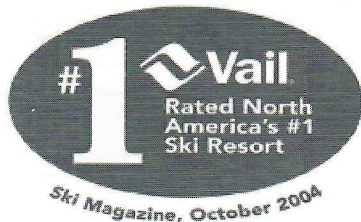
Sterling Silver and Gem Stones

Available for home shows

Houston, Texas

(281) 497-8552

Dana Wardell



VAIL, COLORADO

Long Trip: December 3-10, 2005

Full Package: \$771

Land Package: \$550

Short Trip: December 3-7, 2005

Full Package: \$623

Land Package: \$396

Heat got ya down? Transport yourself to fabulous Vail. Smell the icy clean air and see the pristine white snow just waiting for you! Grinch got your Christmas spirit? Vail can heal what ails you. Beautiful snow, terrific runs for every level skier, everything decorated for the season AND look at the price! When's the last time you went to a top ski resort for these prices? As a little added incentive, you can pay for these trips with a credit card using our PayPal through Space City Ski Club.

We have two trips to offer you, a week long trip and a four-day getaway. We'll be on United Airlines and both trips are scheduled to depart Houston for Denver on Saturday December 3rd about 9:00 a.m. The short trip will return on Wednesday evening so you can even ski that morning! The long trip returns from Denver on Saturday afternoon late. We will have a 2-1/2 hour bus ride to the resort with a quick stop at Applejack's liquor store and the grocery store.

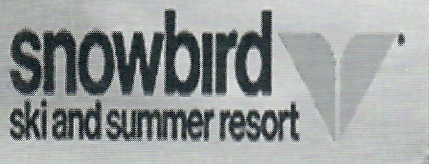
We are staying at the gorgeous Landmark Tower Condos which are located 100-150 yards from the Vail Eagle-Bahn Gondola at Lionshead. We will be smack dab in the middle of après ski bars and restaurants. This place even has an outdoor heated swimming pool and two hot tubs to soothe those tired muscles.

Vail is a huge mountain boasting 5,289 acres of skiing and 300 days of sunshine. There are other activities available besides skiing and snowboarding. There's a tubing zone, snowshoeing, cross country skiing, ice skating, and ski-biking. It also has a FREE Mountain Tour called "Meet the Mountain" daily at 9:30 a.m. Then you have Vail's world-class restaurants, shopping, galleries, après ski and night life. And we're going to be in the middle of all that!

This is truly a trip you won't want to miss. Space is limited, so, sign up early and often!!

TC: Dana Wardell 713-522-2733
ATC: Judy Schiro 713-939-8235

dwardell@stalkerenergy.com
ronhayes@houston.rr.com



SNOWBIRD

February 25-March 4, 2006

(Saturday-Saturday)

Full Package: \$1,097

Land Package: \$699

Snowbird and Alta have been named the No. 1 ski resort in the United States by SKIING Magazine for three years running. The combined resort is the main justification for Utah's claim to the "Greatest Snow on Earth." A lucky combination of geological features makes their powder snowfall the driest, fluffiest, most skiable snow in the world. To take full advantage of this natural bounty, Space City Ski Club will enjoy ski-in/ski-out convenience at the luxurious Cliff Lodge Resort and Spa during prime powder season.

Our trip will get off to a flying start via a non-stop flight on Continental. No need to get up before dawn for this trip; our flight departs IAH at a convenient late Saturday morning time, arriving early afternoon at Salt Lake City. Then just a short 29-mile bus ride later, we arrive at our home base for the week - Snowbird.

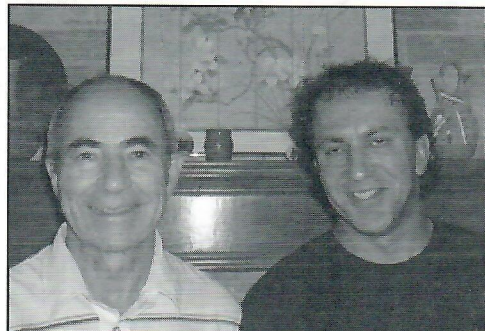
Enjoying an average annual snowfall of 500", Snowbird has one of the largest vertical drops in Utah of 3,240 feet. Connected by lift to neighbor Alta, a combined skiable area of almost 5,000 acres awaits. While Snowbird offers a wide variety of challenges for everyone, Alta is world famous as a skiers-only paradise, one of the few left. But wait, there's more! Space City participants will also be able to ski neighboring Brighton and Solitude-four areas using one super-pass. Folks, that's 350 different runs, 34 ski lifts, and over 7,500 acres of snow sports.

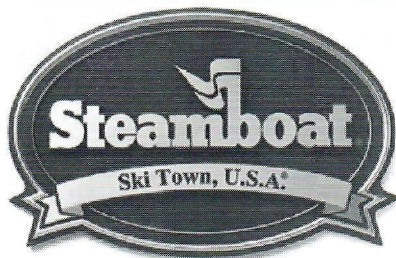
Snowbird is a cozy pedestrian village harmonizing with the rugged beauty of Little Cottonwood Canyon. Our rooms at the Cliff Lodge, Snowbird's flagship accommodations, offer twin/queen bed accommodations. Included in each room are a hair dryer, coffee maker, and small refrigerator. We won't have to worry about toting our gear back to our rooms as our hotel provides convenient indoor facilities that include boot dryers, shelves and space for your skis just off the slopes. After skiing/boarding all day, enjoy the heated pool and hot tubs. The world-class Cliff Spa has 24 private treatment rooms. The hotel's four restaurants include the Atrium, located at the base of an 11-story glass wall, providing breathtaking views of the mountain. After an unparalleled week, we board our Continental non-stop flight for a convenient Saturday afternoon arrival at Houston.

Don't miss this fantastic skiing adventure. Mail in your deposit or use SCSC's PayPal. See our web site (www.spacecityskiclub.org) for instructions.

TC: Bruce Baird 281-496-4661
ATC: Leslie Allison 979-732-3233

Bruce2skis@aol.com
leslieallison@msn.com





STEAMBOAT SPRINGS, COLORADO

Long Trip: January 7-14, 2006

Full Package: \$940 (Hayden Airport)

Land Package: \$609

Short Trip: January 10-15, 2006

Full Package: \$740 (Denver Airport)

Land Package: \$522

Champagne Powder And Cowboy Hats! Go ahead, wear your Billy Kidd cowboy hat. Ski with former Olympic silver medallist who has been the ambassador for Steamboat ever since. Kidd is but one of 54 athletes who have made the town of Steamboat the number one producer of winter Olympians in North America. In 2002, Steamboat sent more athletes to the Winter Games than many small countries, including Travis Mayer, 2002 Olympic Silver Medallist. By the way, the guy next to you on the lift may well have been out wrangling all morning.

Steamboat is simply known around the globe as Ski Town USA. Recently celebrating its 100-year anniversary, you'll be hard pressed to find another resort town that exudes this much history, heritage and character. Nestled 7,000 feet up in the Colorado Rockies, Steamboat is one of North America's largest ski mountains. With 142 trails, 3600 vertical feet, and nearly 3,000 skiable acres, its six peaks are filled with world-class groomed cruisers, bumps, steepes, open meadows, legendary tree skiing, and Mavericks - North America's longest super-pipe.

The town—well it's as much fun as the mountains! Bars, lounges, discotheques range from R&R to C&W; over 75 in the area, many of which offer live entertainment. Would you like to take a day off to rest those hard-worked ski legs? You could spend the day curled up with a good book by the fireplace watching the snow fall outside the window. After all, they do get over 350 inches per year. Or, you could spend the day cross-country skiing, playing indoor tennis, sleigh riding, dog sledding, ice fishing, snowmobiling, snowcat riding, just to name a few. If this still sounds a little to energetic, why not take a swim at the Hot Springs pool or enjoy one the Spa services located in town, followed by a shopping spree through the many charming local boutiques.

Are you worried about getting up to catch a bus or a long walk to the slopes? Fear not, we will be staying at Dulany. Dulany is perhaps the finest vacation property in Steamboat Springs. Its ski-in/ski out location and proximity to base-area attractions make it one of the most conveniently located properties in town. Designed for gracious living, spacious interiors featuring polished tile accents, soft-toned wood cabinetry, private balconies and distinctive furnishing, Dulany is a favorite of Steamboat travelers. Aside from many amenities & services, if you need to conduct a little work on the side, each condominium is equipped with high-speed Internet access.

Steamboat? "Why Not", which happens to be my favorite run on the mountain - over 3 miles of pure corduroy. Dust off that hat, polish up those cowboy boots, oh - and it wouldn't hurt to sharpen and wax those skis (we may do a little bit of that) and join us on this TSC trip where the Old West is alive and well.

TC:	Thuy Tran	(h) 281-376-0343 (c) 713 502-1979	ttran@kmg.com
ATC:	Richard Rocque	(h) 281-376-0343 (c) 713 502-1975	rrocque@entouch.net



BIG MOUNTAIN WHITEFISH, MONTANA

BIG MOUNTAIN

March 11-18, 2006

Full Package: \$1,027

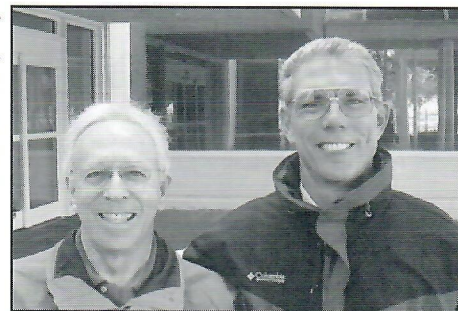
Land Package: \$599

The Crown of the Continent is one of the premier mountain eco-regions of the world, including Glacier National Park, the Bob Marshall Wilderness Complex in Montana and Waterton Lakes National Park in Alberta. Set at the edge of these treasured and storied wilderness landscapes is Big Mountain Resort and the town of Whitefish, Montana. Big Mountain's village is only eight miles from Whitefish's Central Avenue.

The ski mountain has an annual snowfall of 300", a vertical drop of 2,500 feet and a longest run of 3.3 miles. The ski area covers over 300 acres with 91 marked trails. 20% Beginner, 50% Intermediate and 30% Advanced/Expert. 11 lifts - 2 high speed quads, 1 chairlift gondola, 1 quad chair, 5 triple chairs, 1 double chair and 2 T bars make getting up the mountain easy. The mountain has something for everyone.

Our accommodations will be at the famous Grouse Mountain Lodge, which is near Glacier National Park, the Big Mountain Ski Resort, and Flathead Lake. We will start each day with a full breakfast, which is part of our package. After skiing, we will have access to the lodge's recreational facilities; an indoor pool, indoor/outdoor Jacuzzis, fitness center, sauna, mountain bikes, tennis courts, soccer field, and cross-country skiing. There is a gift shop, concierge, rental cars on-site, convention services, business center, meeting rooms and fine dining and entertainment. This is a TSC trip so we have the normal NASTAR races, TSC parties and awards dinner, plus our own special events.

TC:	Bill Brown	(w) 713-246-7254, (h) 281-930-8472	bill.a.brown@shell.com
ATC:	Bob Gottlieb	(w) 281-244-4408, (h) 281-486-0254	rgottlieb@houston.rr.com



ASPEN SNOWMASS™

ASPEN 2006
Best Ski Area in the West
February 4-11, 2006
Full Package: \$1,084
Land Package: \$750

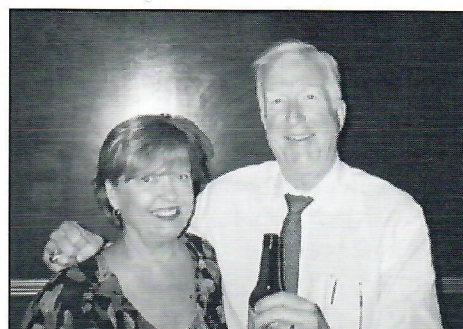
"THIS IS THE TRIP OF THE YEAR!" If you haven't been to Aspen yet, you need to go now! This acclaimed resort is a very exciting town, nestled among some of the most beautiful natural scenery anywhere. Come to ski and discover 4 world-class mountains, over 4900 acres of skiable terrain for every level of skier. Aspen Mountain and Aspen Highlands are renowned for expert and intermediate skiing while Buttermilk is an entire mountain created just for beginners and intermediates. Of course, Snowmass is a favorite for every kind of skier. Discover Aspen's remarkable restaurants, outstanding shopping, and early and late night entertainment that goes on and on and on. You will find an energizing mix of skiing, dining, shopping, dancing, and partying that is not available in any other resort anywhere. Or just relax, watch people, and enjoy a great vacation.

Forty-four (44) lucky skiers will leave Saturday, February 4, 2006 at 11 a.m. from Bush-IAH flying on American Airlines into Eagle/Vail arriving in Eagle at 3:00 p.m. We will bus to Aspen in 1-1/2 hours, where the fun will begin. If you choose to return as opposed to staying in Aspen forever, the flight leaves Eagle at 4 p.m. and arrives in Bush-IAH at 9 p.m. on Saturday, February 11, 2006.

Right on the mountain, ski-in/ski-out, the Aspen Mountain Collection of condos will be our home for the week where outdoor hot tubs, outdoor heated pools, fireplaces, and kitchens are all available. The condos are next to the Gondola and Little Nell on Aspen Mountain. They are also only one block from the bus station. Aspen has free bus service to all of the other ski areas and the lift tickets are interchangeable! Each morning will feature free coffee and croissants in the ATC's condo where ski plans for the day can be set, followed by skiing, lunch, happy hour, dining, partying, laughing, and bragging about skiing on the double black runs on Buttermilk. Downtown Aspen's best restaurants and nightspots are a stone's throw away, even if you aren't Nolan Ryan or Roger Clemens. After skiing, each day will be limited to drinking, dining, shopping, dancing, bragging, and talking...whatever you decide.

Do not be left out! Be sure to send in your deposit, or pay online with SCSC's PayPal, for our Aspen trip ASAP on August 13th! "THIS TRIP WILL FILL UP FAST!"

TC:	Jill St. Clair	713-783-6945	jstclair@hal-pc.org
ATC:	Tom Hogle	713-256-7800	thogle@aurorafin.com



MAMMOTH

MAMMOTH MOUNTAIN

January 21-28, 2006
Full Package: \$1,166
Land Package: \$763

It has been a long time coming. Mammoth Mountain, California is one of the country's largest ski areas. Join us for a week of outstanding skiing in an area that averages 400 inches of snow per year with an unbelievable 607 inches last year! Mammoth Mountain consists of 3,500 acres of skiing with an 11,053 foot summit. The 3,100 vertical feet of skiing is serviced by 27 lifts including 2 gondolas for your pleasure. The skiing breakdown is 25% green, 40% blue, 20% black, and 15% double black runs.

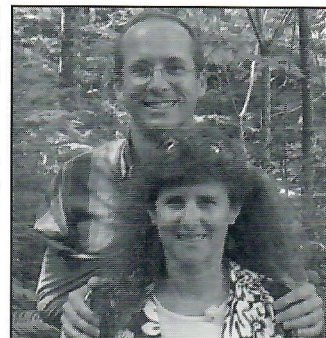
Our transportation will start with everyone on one direct flight from Houston to Reno. We will then be transported by bus to our California destination. The lodging for this adventure will be the ski-in/ski-out, Juniper Springs Resort, a "hotel condominium". These are upscale accommodations next to the Little Eagle Lodge. Yes, the feel of a hotel but inside of a condo. The rooms include gas fireplaces and housekeeping with kitchen and dining areas. The facility also boasts a large lobby area with fireplace, and an outdoor pool and outdoor hot tubs. Then add "The Daily Grind" for coffee, pastries and snacks (in case you prefer a quick breakfast to maximize your skiing time) for a perfect setting.

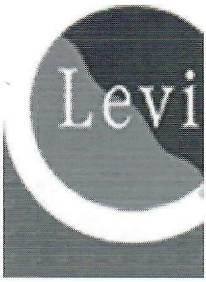
For those of you that want to shop, fine dine, party and explore, the town is only a few minute's shuttle ride away. Juniper Springs offers its own courtesy transportation to The Village, Main Street and Canyon Lodge all day on weekends and in the evenings on weekdays. This is in addition to the local Mammoth Mountain shuttle services.

For those that like to balance downhill with other activities, there is snowmobiling, dog sledding, ice skating, movies, galleries and other in town happenings. Added to that is the Tamarack Ski Center with great cross-country and snowshoeing trails where you can see the awesome, inspiring, rustic view of the Lakes Basin.

Too good to miss! We can't wait. Sharpen the skis, join us and let's go!

TC:	Bill Bomberger	281-495-8668	wbomberger@houston.rr.com
ATC:	Sharon Simandl	713-862-4883	ssimandl@hotmail.com





TSC WINTER EXPEDITION

Finland/Sweden/Lapland

January 28-February 5, 2006

Full Package: \$1,825

Children: \$705/\$684

FINLAND! Land of 187,888 lakes with forests everywhere and amazing **LAPLAND** in the north. Known for some of the friendliest people in all of Europe and one of the most famous persons on earth-Santa Claus! In fact, in 1985, a Santa post office was established in Korvatunturi, Finland/Lapland. Wonder where Lapland is? It's an area-not a country. The area is in the north of the Scandinavian Peninsula (Norway, Sweden, Finland and Russia). The indigenous people, the Sami, have lived there for centuries tending their herds of reindeer. In the summer, you can enjoy 24-hour sunshine, play a midnight round of golf, earn your reindeer driving license, or sleep in a 20-room snow hotel in Kemi.

SKIING! Levi-has 47 slopes and 26 lifts including a gondola. It offers slopes from easy to the black World Cup Slope. Our hotel, the Spa Hotel Levintunturi is located right in the heart of Levi a couple of meters from the ski slopes. The hotel offers a range of services from restaurants, karaoke bars, swimming, saunas, billiards, spa treatments, dancing, NetCafe (for those of you who can not stand to not be "in touch") as well as a host of other activities. The Levi Ski Resort is our destination along with a one-day ski excursion at the Yllas Ski Resort and Pallas. We'll figure out how to pronounce those areas before we arrive.

Daylight time is short but the pure white snow increases lightness in the countryside. During clear ski conditions, you may be lucky enough to see the Auroras. The area is very excited to have us, so expect to see news crews. Room amenities at the Hotel Levintunturi include kitchen with microwave, refrigerator, coffee maker (bring your own coffee) and dishes. Hair dryers are provided and the men's rooms all have twin beds. A full market is within one block of the resort. There are 2 ATMs in the hotel but keep in mind that Finland is on the Euro. Go online to check the rate of exchange before you leave. We'll fly Continental to Newark, NJ, take an SAS flight to Stockholm then a connecting flight to Lulea.

What to do, what to do? Glad you asked since there is a multitude of things to do while there. The Levi ski area has an incredible night life. If you want to go dancing, say "Lahetaanko" to any Finlander and you're off to the dance floor. Live music is everywhere you turn. Daytime activities include a trip to the Arktikum Museum dedicated to the Lapland culture and the Santa Claus village (see, he's back again). How about a trip to Kemi to view the ice hotel or take an icebreaker cruise, or a trip to the Husky Farm via snowmobile along with a Husky Sled ride or a trip to a Reindeer farm via snowmobile or bus to have lunch then take a ride in a sleigh pulled by reindeer?

The price includes 3 dinners—first night in Levi (night 1) at the hotel which will double as the welcoming party and the last night in Levi (night 5) which will be an indoor reindeer feast at the Hotel Crazy Reindeer. After a flight to Stockholm (night 7), we will have a day of sightseeing and farewell dinner at a local restaurant. Our Club get-together will be announced later. Options for the other nights are being explored. They include: Dinner in Lapp Tent (Reindeer Kammi), Dinner at Taivaanvalkeat which is a rural farm accessible by bus. Think about a smoke sauna and then jump in the river. We'll see if Life-Flight is available. A Northern Lights Safari is also being considered—no food but a drink included along the way. Food? What Food? Who needs Food when you are drinking—

Pre-Trip option—Copenhagen! A charming "small" big city that is vibrant and affordable. It has a decidedly European flavor from innocent hedonism to the famous Tivoli Gardens—and don't forget Hans Christian Anderson, Hamlett's Castle and the Louisiana Museum. What-t-t? Have to check that one out!

Post-Trip option features Tallinn, Estonia—one of the best preserved medieval European towns with a web of winding streets. The town was developed in the 11th century and has been inscribed on UNESCO's World Heritage List.

This trip is family optional—please contact the TC or ATC for details. Finland/Sweden! An arctic adventure—one to go down as one of your most exotic ski trips of all times! More to come so stay tuned!

TC: David Eickhoff

832-593-7620

eickhoff@hal-pc.org

ATC: Jan Ferrell

713-266-8222

ferrellj@sbcglobal.net



CANDLES GIFTS CRAFTS

Cindy's Etc.

& MORE

15302 Stuebner Airline Rd. Suite E
Houston, Texas 77069
(281) 866-0998



Debbie
DEBBIE ABADIE, CRS
BROKER/PARTNER
CERTIFIED RESIDENTIAL SPECIALIST
KELLER WILLIAMS
REALTY
713-664-6400



BIG WHITE/KELOWNA BRITISH COLUMBIA

February 11-18, 2006 or

February 15-19, 2006

Big White Full Package: \$1,088

Kelowna Full Package: \$898/Land Package: \$491

www.bigwhite.com

If you enjoy snow skiing and/or WINE join Space City Ski Club for a trip to BIG WHITE/SILVER STAR and KELOWNA, BRITISH COLUMBIA February 11-18, 2006.

The ski trip departs Saturday, February 11, 2006 from Houston Intercontinental to Calgary where we change planes for a 45-minute flight to Kelowna B.C. After a one-hour bus ride we arrive at Big White Ski Resort and check into the Inn at Big White, which is a ski-in/ski-out property with a small kitchen, an indoor/outdoor pool, hot tub, restaurant and bar.

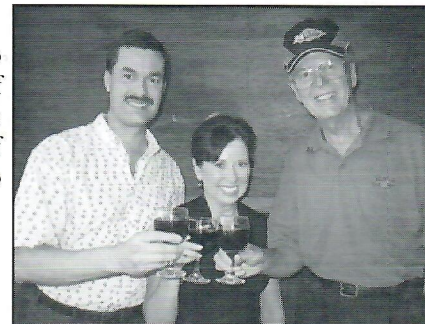
SKIING - Big White has 2,725 skiable acres making it the largest ski area in British Columbia. The base is at 4,950', with 2,550' vertical so the adjustment to altitude is minimal. There are 15 lifts, 118 designated trails - plus 460 open acres with 18% beginner, 56% intermediate and 26% expert. Also available is night skiing, Nordic & cross country trails, snowboard theme park, tubing hill and ice skating. Close by is another ski area - Silver Star Mountain Resort - which has 2600 plus acres, and the lift tickets are interchangeable at both resorts.

On Wednesday, we will transfer to Kelowna and the 5-star Grand Okanagan Lakefront Resort and Conference Centre. The hotel is nestled along Okanagan Lake and has large beautifully appointed rooms with all the amenities and views of the lake or mountains. The Grand offers hot tubs, sauna, indoor/outdoor pool, swimming pool, European spa (with complete body treatments) and an extensive fitness center. The Grand also has a casino with 300 slot machines and more than 20 gaming tables. The hotel offers excellent dining options and is a short walk to the Kelowna cultural district, which has many excellent restaurants, bars/pubs, galleries and shopping. There are more than 20 wineries and 15 golf courses within 30 minutes of the hotel. Several of the golf courses stay open all winter as the daytime temperatures rise to 50 degrees or higher in February. For those skiers who want more skiing, you can ski Apex Mountain and Mt. Baldy, which are about 1-1/2 hours from the hotel. There will be special lift ticket prices for these mountains and heli-skiing opportunities are also available.

WINERY TOURS AND TASTINGS! - While in Kelowna there will be several wine tours offered, including the world class Mission Hill Family Estate and the Summerhill Pyramid Winery where the wine is aged in a replica of Egypt's Great Pyramid. If a week of skiing doesn't interest you, consider just the wine tours & tastings, we have expanded this offering to include a shorter trip just to Kelowna and the WINE country of British Columbia. This trip will depart Houston on Wednesday, February 15, 2006 and return on Sunday, February 19, 2006. For this option you will arrive in Kelowna around 1:00 p.m. which will give you 3-1/2 days to enjoy wine tours and the beautiful Okanagan valley. Or, if you want to do just a little skiing you can take advantage of the skiing at Apex Mountain and Mt. Baldy.

This is a statewide ski trip sponsored by the Texas Ski Council, so you will have the opportunity to make new friends from across the state while doing a little skiing and wine tasting. While lots of activities are planned, including the wine tours, the highlight will be the final awards party at the Grand Okanagan's Ballroom, with sponsored wine, a full dinner and dancing. This will be one of the finest trips offered this year by Space City, and there are so many options, it will be hard to do them all. If you are interested in this trip, please contact:

BW/K TC:	Jerry Montgomery	281-437-5467	jerrymont@houston.rr.com
BW ATC:	Rita Cardenas	281-353-2713	ritacardenas@sbcglobal.net
K ATC:	Mike Mason	281-286-0252	danceallnight@bigfoot.com



BRECKENRIDGE, COLORADO

February 24-28, 2006

Full Package: \$560 Land Package: \$329

We have organized what we consider to be the perfect "short trip," two days vacation to ski four days at one of Colorado's most popular locations! We will be leaving Houston Intercontinental at 5:30 p.m. on Friday, February 24th arriving in Denver at 8:30 p.m. It's less than a two-hour bus ride to Breckenridge to check into the Pine Ridge Condominiums. We'll return on Tuesday arriving in Houston at 10:30 p.m., allowing you the option to ski on Tuesday.

Pine Ridge is a short walk to the main part of town, on the shuttle route and a walkable distance to the lifts. It is a ski in property. With our lift tickets, we can ski at Breckenridge, Keystone or Arapahoe Basin and there is a free shuttle to get us there! We will have an optional trip to Vail. Breckenridge has all the additional outdoor activities available, snowmobiling, dog sledding and tubing available at Keystone. And, Keystone is open for night skiing, which if you've never tried, you can now! It is a great experience. If you've never been to Breckenridge this is a great opportunity to enjoy not just great skiing conditions but a charming REAL town! The skiing suits all levels and being a "not-so-great, once-a-year" skier I think it's wonderful with all the long (and wide) intermediate runs.

Here's the best part - the price is only \$560, which includes air, lodging, bus, a breakfast party and gratuities. Also, an added feature is to pay online through Space City Ski Club's PayPal. This is your chance to have more than one SCSC trip! What more could you pack into a long weekend?

TC: Carol Cain 713-665-8121 Cainsug@AOL.com or cjcain@texaschildrenshospital.org



Trip Registration Form

(Complete ONE Registration Form and prepare ONE deposit check PER trip)

Each envelope must contain the registration form and deposit. Deposit is **\$150** per participant (\$300 for Finland).

Make the check payable to "SCSC" and write trip name and membership number(s) (from Sitzmarke address label) on the check.
Also, write the trip name on the outside of the envelope.

PLEASE PRINT CLEARLY—WE MUST BE ABLE TO READ THE DATA ON THIS FORM

Trip Name: _____

Trip Name: _____

Trip Dates _____ to _____

Trip Dates: _____ to _____

Participant #1

Participant #2

Name: _____

Name: _____

2004-05 Membership # _____

2004-05 Membership # _____

Address: _____

Address: _____

City _____ Zip _____

City _____ Zip _____

Phone(H) _____ (W) _____

Phone(H) _____ (W) _____

Fax _____

Fax _____

E-Mail _____

E-Mail _____

Please check one:

Full package ☐

Land package ☐

Please check one:

Full package ☐

Land package ☐

I understand the following (per standing rules 5.1 - 5.4): Cancellations after trip sign-up must be *in writing* to the Trip Coordinator and all cancellations are subject to a \$30 per person (\$100 per person on Finland) cancellation fee. If I cancel on or after the final payment date, I may forfeit the full amount paid if I cannot be replaced on the trip. Beginning with the 2004-05 season, Trip Transfers will no longer be permitted.

Signature(s) (Required) _____

Please mail your deposit check(s) and Trip Registration Form(s) to the appropriate Trip Coordinator (TC) below:

(Remember: Include the trip name and your membership number(s) on your check and the trip name on the outside of the envelope)

TRIP NAME	TC	Street	City, State	Zip Code	Telephone #
Keystone	Louella Steller	4829 Jessamine	Bellaire, TX	77401	713-666-2347
Vail (both trips)	Dana Wardell	11842 Briar Forest	Houston, TX	77077	281-497-8552
Steamboat (both trips)	Thuy Tran	15 Dusk Valley Court	Spring, TX	77379	281-376-0343
Mammoth	Bill Bomberger	12119 Alston Drive	Stafford, TX	77477	281-495-8668
Finland/Stockholm	David Eickhoff	15650 Pebble Lake	Houston, TX	77095	713-825-6021
Aspen	Jill St. Clair	8010 Meadowvale	Houston, TX	77063	713-783-6945
Big White	Jerry Montgomery	2830 Lakeview Dr.	Missouri City, TX	77459	281-437-5467
Kelowna	Jerry Montgomery	2830 Lakeview Dr.	Missouri City, TX	77459	281-437-5467
Snowbird	Bruce Baird	11330 Inwood Dr.	Houston, TX	77077	281-496-4661
Breckenridge	Carol Cain	5827 Moonmist Dr.	Houston, TX	77082	713-665-8121
Big Mountain	Bill Brown	2522 Pasadena Blvd	Deer Park, TX	77536	281-930-8472