



# The Sitzmarke

SPACE CITY SKI CLUB

Vol. 22, No. 6 October, 1989

OCTOBER, 1989



## INSIDE

CLUB HISTORY  
"YEARBOOK OF  
OFFICERS"

1989-1990 TRIP  
UPDATE

SUMMER BASH  
HI-LITES!





# HEAD OF THE LIFT LINE

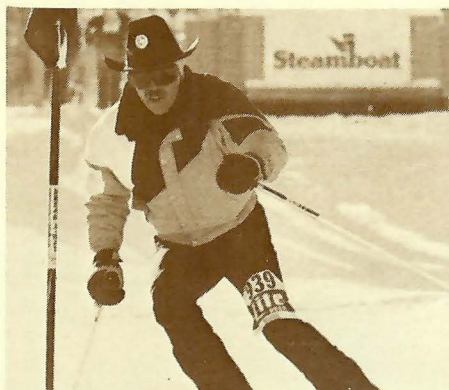
by Jerry Montgomery

It's always a relief to have the September meeting behind us. Response to all the trips was excellent. As has been mentioned many times - if you did not make the participant list on a certain trip - hang in there on the wait list. Odds are in your favor to clear by the final payment date.

Also at the September meeting, members received a questionnaire from the Bylaws Committee. If you did not turn in your response, please do so as soon as possible. Your input is needed for the future direction of your club.

The new Texas Ski Council Directory is now available. Many of you will receive a copy at the October General Meeting. As you will see, Space City Ski Club was instrumental in organizing TSC. Additional copies will be available at the membership table at other upcoming general meetings.

On October 21st and 22nd the Houston Chronicle is sponsoring a "SkiFest" at the George R. Brown Convention Center. A similar show has been conducted in Dallas the past few years. Many ski resorts from all over the world, and equipment manufacturers, will be in attendance to discuss skiing with you. Space City will be one of the exhibitors. Club members will receive an admission discount. Coupons will be available in the *Sitzmarke* or at the general meeting in October. If you would like to volunteer to work in the booth - please contact



**Bob Neilsen, VP-Membership.** October 21st is also the date of our 25th Anniversary Party. You will want to be in attendance for a fun-filled night of reminiscing and surprises.

Don't forget those clothes and equipment you no longer use. The October meeting is the **Ski Swap Auction**. The most popular sale items last year were skis.

There are some great activities lined up for the fall: a **Halloween Party** at Lake Livingston - sign up early for this one - it's a guaranteed sell out, a **Racquetball Tournament** scheduled for November, and the **Renaissance Festival**, which is always a highlight of the month. Please commit to these activities early, as deposits are due. The **October Happy Hour** will be at **Landry's** on Westheimer.

Ski season is right around the corner. Start getting in shape, and think snow.



## WELCOME NEW MEMBERS

Terry L. Anderson  
Michael G. Beck  
Karen A. Bonsall  
Mary Ann Brooks  
James J. Coyle  
Joe & Janie Darr  
Pam C. Dugas  
Lawrence Michael Heim  
Brenda C. Hosetter  
Janet Huebner  
Ranier K. Kern  
Frank B. Mapel  
Melanie D. Millar  
Edgar M. Moss

Jeanne L. Neu  
Candy Pennick  
Dena D. Regas  
Lourie Schmuitt  
Edward R. Shinn  
Bob Simmons  
Ty Smith  
Lynn Talley  
Joy F. Taylor  
Robert R. Tyer  
Carrie S. Vilas  
Sandra L. Wehner  
Linda Sue Williams  
B. Lynn Wilson





## SPACE CITY SKI CLUB

### 1989-1990 OFFICERS

Jerry Montgomery.....	437-5467 (H)	President
Bob Cruse.....	265-0631 (H)	Vice President - Programs
Cheryl Clements.....	341-6809 (H)	Vice President - Trips
Bob Nielsen.....	496-1345 (H)	Vice President - Membership
Debbi Chrissinger.....	870-0115 (H)	Vice President - Publications
Gloria Rooney.....	499-4413 (H)	Secretary
Blaise Guerrero.....	479-1678 (H)	Treasurer

### DIRECTOR OF TRIPS

John Rice	Dick Bryant
530-2517 (H)	937-7533 (H)

### TEXAS SKI COUNCIL

Bill Kirk, Council Representative  
Pam Holder, Council Representative-Alternate

### BOARD OF DIRECTORS

1989-90 SCSC Executive Committee  
Pam Holder, Chairman

Bill Kirk	Gordon Wise
Beth Nolen	Bill Vasen
Ron Smith	Ray Naudain
Ginger Howard	Bob Olsen
Lynn Eaton	

### SITZMARKE STAFF

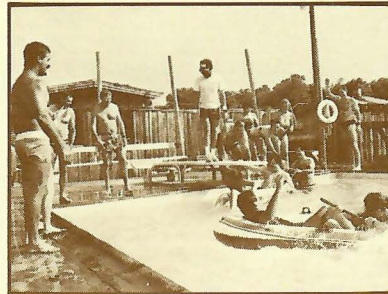
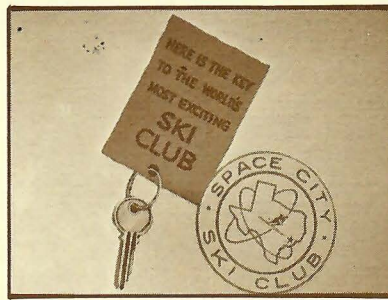
PUBLISHER	Space City Ski Club
EDITOR	Debbi Chrissinger
CONTRIBUTORS	Jerry Montgomery Dick Bryant Bonnie Hughes Sharon Inman Dick Howard Tom Cronin
COVER DESIGN	Debbi Chrissinger

## SITZMARKE

The Sitzmarke is published monthly by the  
SPACE CITY SKI CLUB

Volume 22, No. 6

OCTOBER, 1989



## 25 YEARS OF HISTORY..

How it all started.

Page 5

## 1989 SUMMER BASH

Boat Races, Volley Ball, Limbo and good times!

Page 7

## SNOWBIRD - Trip of the Month

Page 23

## EDDIE'S BALLROOM

Space City ... or is it Bay City that invaded Manvel?

Page 24

## SCSC OFFICERS

Yearbook ... The Early Years.

Page 12

## PLUS

Ski Desk News.....	Page 11
Past Officers Directory.....	Page 25
Hot Gnus.....	Page 16
SkiFest.....	Page 6
Trip Standings.....	Page 20



# EVERY SKI JACKET EVERY SKI

# 50%

\*MERCHANDISE  
REBATE  
CERTIFICATE!

**\*50% MERCHANDISE REBATE  
CHOPS THE COST OUT OF SKIING!**

Buy any ski or ski jacket at our everyday low price and receive a merchandise rebate certificate equal to 50% of the value of the ski, the jacket or both to be credited towards any additional purchase in the store. Sale items included. Rebate cannot be applied to a rebated item or tennis balls.



EXPO: 6100 Westheimer 783-8180  
MEMORIAL: 12526 Memorial Drive 464-2639

1960 WEST: 6540 FM 1960 W. 537-0928  
GULF FREEWAY: 12819 Gulf Freeway 481-5217



# HISTORY

## SPACE CITY SKI CLUB...HOUSTON, TEXAS

by Tom Cronin

*Early in the summer of 1964, Tom Cronin and Rolfe Beaudry discussed where and with whom they might ski in the coming winter. Both had skied with the Dallas Ski Club and had also skied with friends from Houston, including the Houston Ski Club.*

*The two felt that while some of these groups offered a good blend of skiing companionship and Apres-ski socializing, they were not of the age group, nor had the proper objectives to attract new friends to join them in one of their favorite sports. Suggestions were made for the formation of a new ski club in Houston, made up of younger, single and married people. Tom and Rolfe already knew of several of their friends who enjoyed skiing and thought that the idea of a club of their own would be appealing. They also realized that the obvious growth of skiing, as evidenced in magazine articles and in fashions, could easily be the key to having a well-organized and fun ski club offering much to its members.*

*The plan for the club was generally patterned after that of the Dallas Ski Club. The Houston Ski Club it was felt was a close-knit group with different objectives and any attempt to more or less "pep up" the Houston Ski Club was discarded.*

*In August 1964, after notifying friends, Tom and Rolfe called an organizational meeting. Fourteen persons attended and after a discussion of ideas, the 1964-65 officers were appointed. This group called a September meeting for a larger group of personally invited friends to meet at the Piney Point Golf Club.*

*Some forty people attended on that Monday evening in September. At this meeting a name for the club was selected and with the payment of the first \$5.00 dues by eighteen people, the SPACE CITY SKI CLUB was off and "skiing." These eighteen charter members all submitted additional names of their friends who might be interested in participating in the club, and planned a program for the next month.*

*The first general meeting was held on October 12, 1964, at the Sheraton-Lincoln Hotel and approximately 250 people came out to see this new club. An excellent movie was shown, and tentative plans for the coming year were outlined.*

*At this meeting the usual pattern of having a social hour before the business meeting, and movies (when possible) was established.*

*A few days later, the annual fashion show by Oshman's Sporting Goods, showing their entire line of White Stag Ski Wear, was held with our lovely young ladies as models. Everyone seemed to enjoy the show, the fashions, and the girls. As the months went by, the popularity among the young professional set of the Space City Ski Club grew and with this, the names on the trip lists multiplied.*

*The first Aspen Trip (February 1965) was originally planned for around forty people, but locating a small plane was surprisingly impossible. The best alternative was to obtain a plane that could carry seventy-eight passengers, and hope for sixty persons to participate. In Mid-December, though, the demand appeared sufficient to try to fill a 103-passenger plane. So additional accommodations were requested and obtained in Aspen, Colorado, at the Limelight Lodge, The Aspen Alps Apartments and various other available accommodations around the village.*

*A filled plane! Not only was the requested aircraft filled to capacity, but about twenty other Space City Ski Club members met the group in Aspen. Activities for the week included: Races and awards at the Aspen Highlands, several wine and cheese parties, dinner at the Country Club Inn, and the usual individual parties.*

*A weekend bus trip to Ruidoso, New Mexico, in January 1965, saw sixty eager Space City Ski Club members off to the slopes for some winter skiing. The Chapparal Inn was the scene of much of the Apres-ski merriment, as well as the resting place for the weary skiers after a full day on the slopes.*

*As winter 1965 came to a close and gave way to that season the skier dislikes most, the Space City Ski Club was busy planning a better club and better club activities.*



# THE HOUSTON CHRONICLE SKIFEST

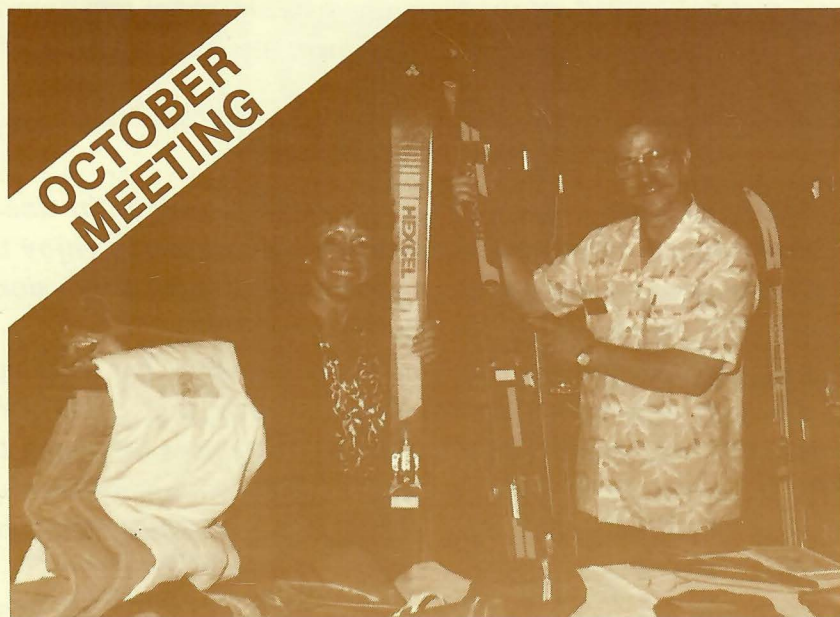
by Dick Howard

One of the pleasures of belonging to Space City Ski Club is to share the excitement of skiing with your friends. This month, you will have another opportunity to do just that by attending the first annual Houston Chronicle SkiFest on October 21 and 22 at the George R. Brown Convention Center. Unlike some travel agent shows or local merchant shows, this is a national trade show intended for the general public and will feature exhibitors from four favorite ski resorts, the industry's leading equipment manufacturers, a film festival, fashion shows, equipment swap, and the ever popular ski deck. This show should get good TV and radio publicity plus a special skiing section in the October 15 Sunday Chronicle.

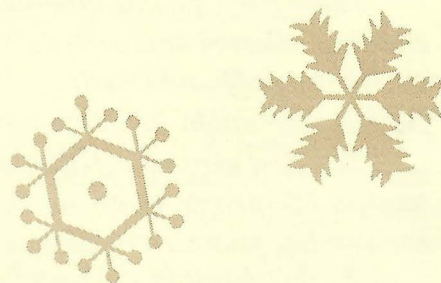


Space City Ski Club will be an exhibitor at the show in order to "turn on" potential new skiers to skiing and the ski club experience. We need extra help, however. First --we want every SCSCer to attend the show. That's easy. You will want to go anyway, but to make it even easier, a discount coupon is included in this issue of the *Sitz*. Be visible! Wear your SCSC pin, patches, sweatshirts, etc. Show the people of Houston that there is a great ski club in town. But especially, invite our non-skiing friends, co-workers, and neighbors so they can see what it's all about.

Come join the fun. See you there.



**ATTENTION!!!** Empty out your closet of your old ski clothes, gloves, coats, etc. Bring in your skis, poles, and bags for the annual "OCTOBER SKI SWAP & AUCTION" to be held at the next SCSC meeting, October 9.



## DISCOUNT COUPON

Present this coupon at the door and receive

**\$1.00 OFF**

Regular Adult Admission Price  
(One coupon per person, please)

## HOUSTON CHRONICLE SKI FESTIVAL

SATURDAY, OCT. 21 • 11 a.m. - 6 p.m.  
SUNDAY, OCT. 22 • NOON - 6 p.m.

GEORGE R. BROWN  
CONVENTION CENTER  
1001 Convention Center Blvd. • Houston

\$5 Regular Adult Admission Price  
Children Under 12 Free

Produced by  
The Travel Marketing Group<sup>sm</sup>  
A division of J&D Expo Productions, Inc.  
in cooperation with  
Houston Chronicle • Z107-FM • KPRC-TV  
American Ski Association • Warren Miller Entertainment



# SUMMER BASH

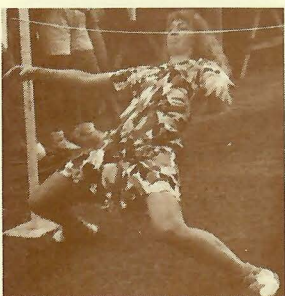
by Sharon Inman

Despite a sizzling temperature and stifling humidity, 136 friends and members ventured south of Houston for day of FUN & SUN at Camp Manison.

We had a huge covered patio area to mingle, drink beer and inspect all the flyers for the upcoming ski trips with music provided by **Andy Visco's** stereo.

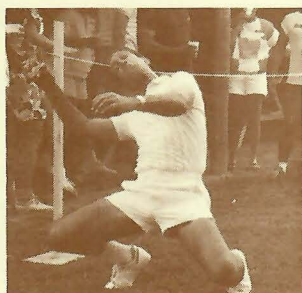
After much coaching, I finally persuaded 32 men and women (16 of each) to participate in the Orange Relay - a little number involving picking up an orange from the lap of the person to your left with you teeth and dropping in your own lap for the person on your right to pick up with their teeth and so on - all of this being performed with everyone's hands tied behind their back. It was a close finish between the teams, although no one seemed to care who won - just how much fun it was trying to win! **Arlene Bradley, Vern Oliver, Dawn Pyle, Manuel Valley and Ed Cain** were among those keeping things lively.

On to the pool for the boat races. **Bob Cruse** "emceed" this event which featured such performers as **Bob Fried** and **Rosanne Clark** (did you two ever decide what that "funny thing" you were sitting on in the bottom of the boat was?), **Bill Vasen, Becky Hall, Dick Howard, Vern Oliver and Eugene Walker**. I didn't get the names of the official winners, but everyone cooled off.



G. A. Addicks

## LIMBO STYLES!



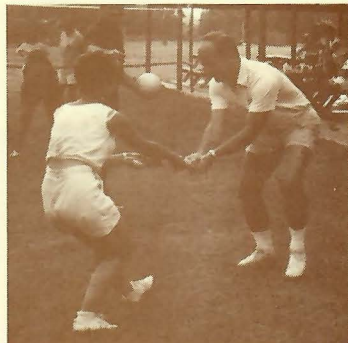
Gary Sequeira



Andy Visco



Happy Limbo Contest Winner, Suzan Miles shows off her new ski bag from Oshman's!



Sharon Girffin and Ed Cain playing with water gun.



Becky Hall



VOLLEYBALL!



BOAT RACES!

Back to the patio for a lot of unplanned water balloon throwing (the balloons were for the Balloon Toss which didn't come off due to lack of interest) instigated by Vern Oliver and Dave Ross. Dave McGehee was seen pouring beer on this ATC's head; Sue Salvage in turn retaliated by pouring beer on David's white shorts. Oh well, the little kids in all of us gets loose every now and then.

During the BBQ dinner, the door prizes were won by **Mike Moldofsky** - \$100 SCSC certificate on any ski trip and **Becky Hall** - complimentary Brunch for Two at the **Holiday Inn Crowne Plaza**.

Cont'd on pg. 9

**Allstate®**



**LOREN GULLEDGE**

Account Agent

7001 Highway 6 South at Bellaire

Suite 236 (Target Center)

Houston, TX 77083

Bus. 879-4885 • Res. 556-1370



# OSHMAN'S

**SHAPE UP  
FOR SKI SEASON  
AT OSHMAN'S  
SKI DECK!**



**...and get the feel and motion  
of actual ski conditions  
before you ever leave home!**

Our super-size moving-surface ski deck provides a unique experience for skiers at all proficiency levels. Beginners learn basic form technique and can work out on a moving surface which closely approximates actual snow conditions. Intermediate level skiers can brush up so they can take up where they left off last year. Advanced skiers can work on muscle conditioning and basic freestyle maneuvers!

Oshman's Ski Deck is located at

**2131 S. POST OAK**

**FREE  
HOT  
WAX**

## OSHMAN'S COUPON

Coupon entitles the bearer  
to free hot waxing on  
one pair of skis.

(Does not include bottom repair.)

Coupon expires February 15, 1990

**SAVE  
\$10**

## OSHMAN'S COUPON

### RAICHE 589 SKI BOOTS

Coupon entitles bearer to  
\$10.00 discount on a pair of  
Raiche 589 Boots.

Coupon expires February 15, 1990. Offer  
limited to stock on hand. No dealers.

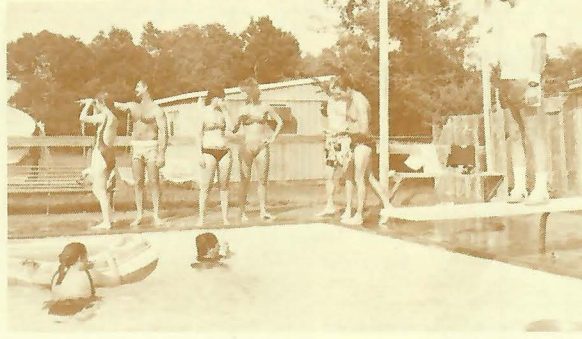
Visit our five ski departments for fantastic selections on the latest ski apparel & equipment.

- 2131 S. POST OAK (Full Service Ski Shop & Ski Deck) • SHARPSTOWN CENTER
- TOWN & COUNTRY VILLAGE • CHAMPIONS FOREST PLAZA • ALMEDA SQUARE





Gayla Cawood and Cindy Byard  
"working" the Check-In Table.



Bob Cruse trying to get the Boat Races started.

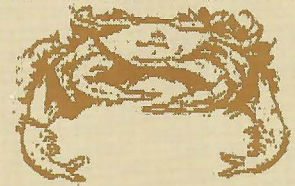
Andy Visco, Suzan Miles, Becky Hall, Gary Sequeira, Sharon Griffin and G. A. Addicks gave a good show dancing under the limbo stick with many of us cheering them on from the sidelines. Suzan Miles finally prevailed as winner; prize was a large Adidas sports bag donated by *Oshman's - Post Oak*.

A big Thank You to Holiday Inn Crowne Plaza, Oshman's - Post Oak and all my volunteers -- you were great!!



Shelly Bidvia and Bill Vasen relax in the pool.

# OCTOBER HAPPY HOUR



## LANDRY'S

6159 Westheimer  
(across from Sun & Ski Sports)

**THURSDAY  
OCTOBER 19**

**5:30-8:00 P.M.**

**SPECIAL  
SEAFOOD BUFFET  
\$1.00 DRAFT BEER  
Plus HAPPY HOUR  
DRINK PRICES**



# HALLOWEEN HAUNTED HOUSE

**The Morgan's Castle • Lake Livingston  
Saturday, October 28th • 7:30 p.m. - ???**

**COST: \$15 per Person  
BEER, WINE & FOOD PROVIDED**

**★ Costumes Required ★**

- Grounds Available for Camping
- Motels Close By with Special Rates
- Biking and Volleyball on Sunday

*Final Payment Due October 19, 1989*

**Make checks payable to SCSC and mail to: LINDA LICARIONE**

**8814 Croes Dr., Houston, Texas 77055 - (Home) 468-2816 - (Office) 775-2649**

### **DIRECTIONS TO PINWAH PINES:**

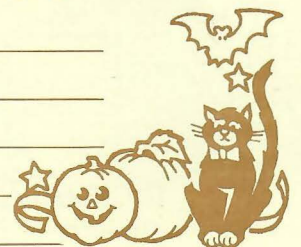
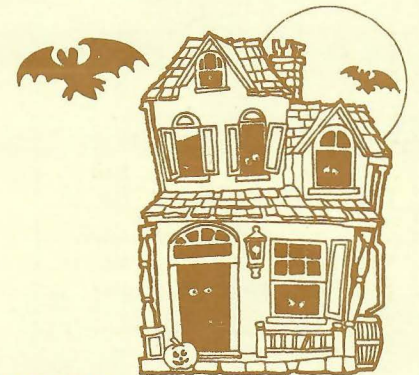
Located 8 miles West of Livingston, on Highway 190 or FM 2457. Turn off Highway 190 or FM 2457 at Blanchard Road .. follow signs to Pinwah Pines. From entrance to subdivision, go thru 2 sets of white fences, then take 3rd road to the right. Look for GMC motorhome. We are on Robby Circle, brown and stone house. Call CHARLES and KATHY MORGAN (409) 566-5101 for further directions.

NAME: \_\_\_\_\_

DAY PHONE: \_\_\_\_\_

HOME PHONE: \_\_\_\_\_

ADDRESS: \_\_\_\_\_





# SCSC 1989-1990 TRIP SCHEDULE

(Any Information Shown on This Sheet is Subject to Change)

TRIP	DATES Depart Hou. Depart Area	Ski Days	Price	Final Pmt. Date	No. Skiers	Lodging Name No. Bedrm/Bath	Special Activities	Lift Ticket Prices	Trip Coordinator Asst. Trip Coordinators	Home Phone	Work Phone
*SNOWBIRD TSC Fall Roundup	Nov. 22 Nov. 26	3½	\$474	Oct. 2	60	Cliff Lodge Ski In/Out	TSC Activities SCSC Group Party Awards Party	\$20/Day	Craig Tharpe Beverly Merritt	665-0189 721-7814	789-7950 896-0756
ANGEL FIRE Christmas Trip	Dec. 26 Jan. 1	5	\$475	Oct. 26	40	Legends Hotel Ski In/Out	Taos, Ski Rio Group Meals New Year's Party	\$21/Day	Joyce Ryan Ann Harvey	977-3360 464-7150	465-7326
*SUMMIT I Texas Ski Week	Jan. 6 Jan. 13	6	\$515	Nov. 6	40	Quicksilver 2 Bedrm/2 Bath	TSC Activities SCSC Group Party Awards Party	\$19/Day	Mike Rooney Howard Pallet	499-4413 668-9616	877-6071 680-2100
*SUMMIT II Texas Ski Week	Jan. 6 Jan. 13	6	\$515	Nov. 6	40	Quicksilver 2 Bedrm/2 Bath	TSC Activities SCSC Group Party Awards Party	\$19/Day	Kim Page Robbin Anderson	952-7212 980-8969	877-6146 622-7313
*SUMMIT III Texas Ski Week	Jan. 6 Jan. 13	6	\$515	Nov. 6	40	Quicksilver 2 Bedrm/2 Bath	TSC Activities SCSC Group Party Awards Party	\$19/Day	Patrice Reed Dave Pullin	781-6623 496-0184	750-8013
*SUMMIT IV Texas Ski Week	Jan. 9 Jan. 14	4	\$444	Nov. 6	60	Eastlake Complex 2 Bedrm/2 Bath	TSC Activities SCSC Group Party Awards Party	\$19/Day	Dave McGehee Sue Salvage	975-6417 690-5551	622-9990
WOLF CREEK	Jan. 18 Jan. 22	3	\$335	Nov. 13	26	Oak Ridge	Powder Lessons Breakfast Incl. Hot Mineral Springs	\$20/Day	John Cook	448-5012	999-0070
WHISTLER	Jan. 27 Feb. 3	6	\$752	Dec. 4	60	Tantulus 2 Bedrm/2 Bath	Water Slide Wine & Cheese Group Dinner	\$26/Day	Jim McIntyre Elaine Bell	558-5617 686-7197	556-3283 622-9990
**LAAX/FLIMS SWITZERLAND Texas Expedition	Jan. 27 Feb. 4	6	\$1186	Nov. 13	30	Panaroma Villarosa	Meals Included Swiss Party Awards Party	\$25/Day	Shirley Andries	879-9663	579-4700
SALT LAKE	Feb. 8 Feb. 12	3	\$395	Dec. 4	32	Hilton Salt Lake City	Pizza Party Park City Bash Gourmet Happy Hours	\$27/Day	Ed Kanyuck Sharon Inman	644-4432 445-3702	643-8770 686-4331
*PURGATORY TSC Winter Shootout	Feb. 20 Feb. 25	4	\$420	Dec. 4	60	Tamarron	TSC Activities TSC Club Race Awards Party	\$17/Day	Elyse Turla Loren Gullede	526-1564 556-1370	622-7733 879-4885
BIG SKY	Feb. 24 Mar. 3	6	\$600	Dec. 4	38	Huntley Lodge	Wine & Cheese Snowmobiling Yellowstone Theme Party	\$23/Day	Kathy Walsh Tom Okamoto	498-4944 995-1391	797-3063 247-6492
*HEAVENLY I TSC Final Showdown	Mar. 11 Mar. 18	6	\$665	Jan. 8	40	Harvey's Resort Hotel	TSC Activities TSC Club Race SCSC Group Party	\$27/Day	Peggy Donley Debbie Bergeron	661-4740 367-7534	656-6864 223-2900
*HEAVENLY II TSC Final Showdown	Mar. 10 Mar. 17	6	\$665	Jan. 8	40	Harvey's Resort Hotel	TSC Activities TSC Club Race SCSC Group Party	\$27/Day	Donna Repka Anita Yeomans	980-4403 796-8739	654-4484 792-2828
*HEAVENLY III TSC Final Showdown	Mar. 10 Mar. 17	6	\$665	Jan. 8	40	Harvey's Resort Hotel	TSC Activities TSC Club Race SCSC Group Party	\$27/Day	Corkey Ament Connie Nielsen	568-7212 496-1345	666-8443 468-8311

\* TEXAS SKI COUNCIL SPONSORED TRIPS.

\*\* TEXAS SKI COUNCIL SPONSORED TRIP. LAAX/FLIMS REQUIRES A SPECIAL \$300 DEPOSIT, A \$100 CANCELLATION FEE OR \$35 TRANSFER FEE.

ALL REGULAR TRIP DEPOSITS ARE \$100 DUE AT SIGN-UP. ALL OR PART OF DEPOSIT IS NON-REFUNDABLE IN ACCORDANCE WITH THE STANDING RULES.

**CHERYL CLEMENTS**  
Vice President of Trips  
(H) 341-6809

**DICK BRYANT**  
Director of Trips  
(H) 937-7533

**JOHN RICE**  
Director of Trips  
(H) 530-2517



# FROM THE SKI DESK

by Dick Bryant, Director of Trips

Missed getting on the trip you wanted at the September sign-up meeting? Or did you miss the meeting entirely?

Don't despair! Many trips still have room. Even trips that fill early and have long waiting lists usually experience nearly 100 percent turnover on the waiting list by ski time. Call the trip leader to find if the trip still has room or to sign up on the wait list. You can send your \$100 deposit by mail or attend the October meeting to sign up.

If the trip you want is full, give the trip leader a deposit check to hold your spot on the waiting list until there's an opening on the trip. Most trips will have spots opening up throughout the year, even up to the day before they leave. So, don't be discouraged by a long waiting list. Just stay in touch with the trip leader and be as flexible as possible in your schedule. It won't be unusual to find cancellations a week or less prior to trip departure and a trip leader who calls 30 or more people on the waiting list before finding someone who still wants to go.

Also, there's always the chance that we'll be able to increase the size of some of the more popular trips. But the only way we'll be able to consider doing this is if the length of the waiting list demonstrates there's enough demand.

If you're not in a position to handle the uncertainty of being on a waiting list, be sure to consider other alternatives to your first choice for a ski trip. All of Space City's trips this year will be good ones. That's one of the biggest reasons why people ski with Space City. We have 25 years experience in quality control. Every year our trip leaders spend many hours of training in how to run a good trip and how to adhere to Space City's guidelines for quality. Very few professional tour groups have accumulated this kind of experience.

So, if you aren't already signed up to ski, you can be assured with Space City that you have the best chance possible for problem-free transportation, great accommodations, good

prices and, above all, great people to ski and party with.

And, for those who've already signed up for their "Big" trip of the year, take a look at the many long-weekend trips we're offering. We designed the schedule this year to make it easier for members to get in that extra ski trip that requires only a day or so of extra vacation time. If you've shied away from "weekend" ski trips in the past because of the hectic schedule and hassles involved, remember that with Space City the trip leaders have already taken care of all the planning and reservations for you. They're working to give you the maximum number of ski days with the least hassle.

A final note about the Fall sign-up. Aside from the new location of the meeting, there were some other changes that may not have been apparent, but are very significant. This year's "early sign-up" for club "workers" was much more limited than in recent years and also separated away from the September meeting to alleviate confusion and inadvertent inequities.

Early sign-up -- for those who aren't familiar with the process -- allows Officers, Trip Leaders, Directors of Trips, Liftliners and membership volunteers who work at the September meeting, to sign up for trips ahead of the general membership. This practice is always open to criticism because it fills positions on some trips before the general membership has a chance to sign up.

It's frustrating to be one of the first people to get through the doors in September and find that your trip has already filled. But without an early sign-up, we simply wouldn't be able to run the meeting. Those people who check you in on the membership list, pass out release forms and questionnaires, provide information to new members, monitor the sign-up progress of each trip, receive and tabulate the money, sign people up for other SCSC activities, etc. are members, too. They want to ski just as badly as everyone



else and they are devoting a significant portion of their time in September and many subsequent meetings to make the club work. In order to give them a fair chance to get on a ski trip and to provide incentive for people to continue volunteering, we offer limited, early sign-up each year.

This year, to ensure that the early sign-up was equitable for everyone, we decreased the numbers allowed from 30 percent to 20 percent of each trip (*excluding the trip leaders*). We held the early sign-up in August at a training session where everyone eligible for early sign-up devoted several hours of time to learning procedures for the September meeting (*in the past, early sign-up was just prior to opening the doors in September and was difficult to control*). We made stiffer requirements for participants in the early sign-up of how much work they are required to do during the year; and we put in place a new system to prevent discrepancies in the early sign-up procedures.

We'll continue working to make the process even smoother in the future. And, certainly, we welcome any comments you may have about the sign-up process. Please contact **Ginger Howard** on the By-Laws Committee with any ideas or suggestions at 772-2196.

Our first trip of the year, Fall Round-Up at Snowbird, is just around the corner. Utah is a great place for early skiing - a great place for any kind of skiing. There's still time to check it out if you want an early start for Space City Ski Club's 25th year of skiing. Just give the trip leaders a call.



# SCSC YEAR BOOK

## *THE EARLY YEARS...*

### 1964-1965



**PRESIDENT**  
Tom Cronin



**VICE PRESIDENT**  
Les Bennet



**SECRETARY**  
Ginger Johnson



**PROGRAMS**  
Rolfe Beaudry



**PUBLICATIONS**  
Don Doulette

**VICE PRESIDENT - Ken Reilly**  
**TREASURER - Omer Kircher**

### 1965-1966



**PRESIDENT**  
Tom Cronin



**V.P.—PROGRAMS**  
Rolfe Beaudry



**V.P.— MEMBERSHIP**  
Miles Anderson



**ASSISTANT SECRETARY**  
Margie McIntyre



**AUDITOR**  
Jerry Maley

**SECRETARY - Ginger Johnson**  
**TREASURER - Omer Kirchner**  
**ASSISTANT TREASURER - Barbara Ford**

### 1966-1967



**PRESIDENT**  
Miles Anderson



**V.P.-PROGRAMS**  
Rolfe Beaudry



**V.P.-MEMBERSHIP**  
Barbara Ford



**V.P.-TRIPS**  
Les Bennet



**SECRETARY**  
Margie McIntyre



**TREASURER**  
John Heiman



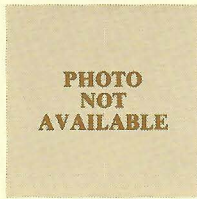
**ASSISTANT SECRETARY**  
Beth Boening



## 1967-1968



**PRESIDENT**  
Rolfe Beaudry



**V.P.-TRIPS**  
Bill Hage



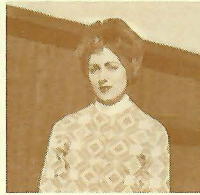
**V.P.-PROGRAMS**  
Ed Dail



**V.P.-MEMBERSHIP**  
Margie McIntyre

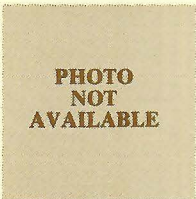


**TREASURER**  
Jerry Maley



**SECRETARY** - Beth Boening

## 1968-1969



**PRESIDENT**  
Bill Wright



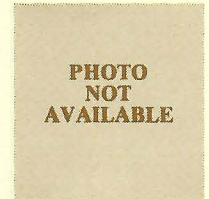
**V.P.-TRIPS**  
Jay Castille



**V.P.-PROGRAMS**  
Don Holloway



**V.P.-MEMBERSHIP**  
Sammie Lou Mavar



**TREASURER**  
Sam Barlow



**SECRETARY AND P. R. DIRECTOR**  
Peggy Adams

## 1969-1970



**PRESIDENT**  
Ron Crossman



**V.P.-TRIPS**  
Wayne Rentfro



**V.P.-PROGRAMS**  
Harry Bristol



**V.P.-MEMBERSHIP**  
Marjean Chrisman



**TREASURER**  
Jay Elston



**SECRETARY**  
Eliza Jane Adams



**P.R. DIRECTOR**  
Martha Sanford



## 1970-1971



**PRESIDENT**  
Jerry Maley



**V.P.-TRIPS**  
Ron Rambin



**V.P.-PROGRAMS**  
Scott Granlund



**V.P.-MEMBERSHIP**  
Barbara Nix



**TREASURER**  
Darwin Miller



**SECRETARY**  
Mary Beth Jackson



**P. R. DIRECTOR**  
Margie Fanette

## 1971-1972



**PRESIDENT**  
Jerry Chiles



**V.P.-TRIPS**  
Pat McLaughlan



**V.P.-PROGRAMS**  
Ed Williams



**V.P.-MEMBERSHIP**  
Joyce Testa



**TREASURER**  
Dan Sebesta



**SECRETARY**  
Virginia Blalock



**P.R. DIRECTOR**  
Tanny Koepfel

## 1972-1973



**PRESIDENT**  
Jim Grassman



**V.P.-TRIPS**  
Jim McIntyre



**V.P.-PROGRAMS**  
Winton Adams



**V.P.-MEMBERSHIP**  
Susan McCotter



**SECRETARY**  
Jane Morgan



**TREASURER**  
Don Lackey



**P. R. DIRECTOR**  
Merry Merrit



## 1973-1974



**PRESIDENT**  
Jim McIntyre



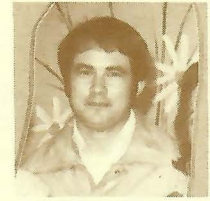
**V.P.-TRIPS**  
Harry Gaston



**V.P.-PROGRAMS**  
Jerry Kearby



**V.P.-MEMBERSHIP**  
Jeanne Bridgman



**TREASURER**  
Jerry Goldberg

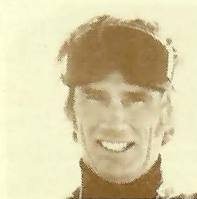


**SECRETARY**  
Kay Nevels



**P. R. DIRECTOR**  
Jean Merritt

## 1974-1975



**PRESIDENT**  
Harry Gaston



**V.P.-TRIPS**  
Tom Baldwin



**V.P.-PROGRAMS**  
Wayne Ahrens



**V.P.-MEMBERSHIP**  
Jeanie Neu



**V.P.-PUBLICATIONS**  
Dianne Matthews



**TREASURER**  
Bob Olsen



**SECRETARY**  
Linda Judge

### Officers of SCSC

*From:*

Ginger Johnson.....1964-65  
Omer Kircher

John Heiman.....1966-67  
Beth Boening

Bill Hoge (*in Hawaii?*).....1967-68  
*Ed Dail (Out of State?)*

Bill Wright.....1968-69  
Sammi Lou Mavar (*in Lubbock?*)

## MISSING!!!

Please help us locate the missing Officers. Contact Penny Chancey (686-4863) ASAP if you know their whereabouts.

♦♦♦♦

*From*

Elisa Jane Adams-Jetson...1969-70  
Marty Sanford

Mary Beth Jackson.....1970-71

Ed Williams.....1971-72  
Virginia "Jini" Blalock  
Tanny Koeppel (*in California*)

*From*

Jim Grassman.....1972-73  
Susan Ramke  
Merry Merritt Schench (*in New York?*)

(Brenda) Kay Nevels.....1973-74

Tom Baldwin.....1974-75

Cynthia Wright.....1975-76

Jane McCormick Cook...1976-77

Ed Taylor.....1977-78

Joe Cotrone.....1979-80





**HENRY S. MILLER, REALTORS®**  
13130 MEMORIAL DRIVE  
HOUSTON, TEXAS 77079  
OFFICE: 713 / 468-8311  
HOME: 713 / 496-1345

**CONNIE NIELSEN**

**Specializing in Memorial/West Houston Area**

Look for a new column in *Skiing* magazine starting November on the interest of ski clubs in the U.S. This is being written by our own and former *Sitzmarke* Editor **Bob Willbanks**, now Editor of the *National Ski Club Newsletter*. Congratulations Bob, we are proud of you.

The love bug has bitten two SCSC members again as **Dee Brown** and **Mark Russek** recited their marriage vows September 30. (Now Mark can really sing "I've Got You Babe".)

Wedding **BELLS!** ATC (Whistler)  
 Elaine Fitzgibbon and Jim Bell were  
 married August 25. Congratulations!

**Cindy Garret and Mike Feldman** have finally settled in South Carolina. They would love to hear from you. Their new address is: 3 North Basilica Ave., Hanahan, South Carolina 29404.

Melissa and Bob Frazier are now a family of "4" after the arrival of 9 lb. 20 inch **Jeffrey Taylor**, born Friday, September 22.

**Carl and Lottie Gautschi** spent several weeks this summer in Aspen. Carl brought back some news on lift ticket prices and ski resort information for the *Sitzmarke* and SCSC. Look for the info in this issue.

While SCSC is celebrating it's 25th Anniversary in October, our President **Jerry Montgomery** celebrated another 25th anniversary in September, that of his 25th birthday. Happy Birthday, Pres!!

**Glenn and Anne Bishop** were the lucky prize winners in the Conky's Anniversary contest. They won a VCR! Way to go!

## Coming Soon...

## THE EXTRAVAGANZA of the YEAR!!

★ HORS D'OEUVRES 25t  
☆☆☆

★ ENTERTAINMENT  
RTY

SCSC'S  
25th ANNIVERSARY PARTY

☆☆☆☆☆☆☆☆☆☆☆☆☆☆☆☆☆☆☆☆

# THE HOUSTONIAN

★ DOOR PRIZES

★ TWO FREE DRINKS

**SATURDAY, OCTOBER 21, 1989**

**8:00 p.m. - 1 a.m.**

**Subsidized by SCSC - Your Cost ONLY \$7.50**

***Final Payment October 9 — Absolutely No Money taken at the Door!***

*(Gentlemen: Jackets Requested, please)*

★ DANCING

**Send Check (Payable to SCSC) along with the following clip out to:**

**DANA WARDELL** - 11842 Briar Forest • Houston, Texas 77077 • (H) 497-8552 • (O) 652-0811

NAME: \_\_\_\_\_

ADDRESS: \_\_\_\_\_

TELEPHONE: (H) \_\_\_\_\_ (O) \_\_\_\_\_

NO. ATTENDING: \_\_\_\_\_ AMOUNT ENCLOSED: \_\_\_\_\_



# GET READY TO SKI!



## SKI EQUIPMENT

*Sporthaus Lindner ...  
Houston's Exclusive  
Völkl Dealer*

**'89-'90 Völkl Skis  
Have Arrived!**

Rossignol Quantum 868 Skis  
Regularly \$365 **\$299<sup>99</sup>**

Nordica 997 Ski Boots  
Regularly \$360 **\$319<sup>99</sup>**

## SKI APPAREL

*Preview the Premier Collection  
of Ski Fashion for  
1990 from:*

Bogner • Obermeyer • Kaellin  
Nevica • Descente • Killy  
Luhta • Club A • Elho  
CB & others!

*Hot Chilly's  
Winter Underwear  
Layering System Is Here!*

# Sporthaus Lindner of Aspen

**2610 Sage Road (across the street from Macy's Galleria III) 965-0412**



## A Special Thank You



### PENNY CHANCEY

and her committee for getting all the information together on the past officers for this 25th Anniversary Edition of the *Sitzmarke*.

(713) 495-2113

Member  
American Association of  
Orthodontists



**Louis D. Schultz, D.D.S., M.S.**

*Diplomate, American Board of Orthodontics*

Office Hours  
By Appointment

11540 Harwin Drive  
Houston, TX 77072



9520 North Freeway  
Houston, Texas 77037  
Bus.: (713) 448-0241

**BRANT B. WILLIAMS**  
Agent



'Like a Good Neighbor, State Farm is There'

STATE FARM INSURANCE COMPANIES  
HOME OFFICES: BLOOMINGTON, ILLINOIS

## UNsung HEROS

### SEPTEMBER MEETING

*Rose Tortorici, Chairman*  
*Robert Clements*  
*Margie McIntyre*  
*Ron Wallace*  
*Winnie Pullin*  
*Jeri Hartman*  
*Kathy Morgan*  
*Doug Barnes*  
*Brad Vandermolen*  
*Dana Wardell*

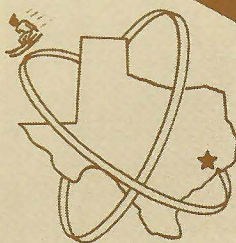
*Cheryl Bac*  
*Lucy Fred*  
*B. J. Scott*  
*Diane Yarberry*  
*Roy Caviness*  
*Randy Taylor*  
*Kathy Laflora*  
*Melinda Jelks*  
*Sy Liebergot*  
*Merrilyn Harvey*

### LOGO SALES

*Susan Tilotta, Chairman*  
*Sharon Griffin*

*Lourdes Janer-Coyle*

## FIRST NOTICE



# WELCOME SKIERS!

You ARE INVITED

TO THE NEXT MEETING OF THE NEW

## SPACE CITY SKI CLUB

MONDAY, OCTOBER 12, 7:30 p.m.

SHERATON LINCOLN HOTEL - GALAXIE ROOM

BRING A FRIEND

THIS IS A REGULAR MONTHLY MEETING

~ 90% SOCIAL & 10% BUSINESS ~

COCKTAILS - SKI MOVIES - PLANS FOR CLUB SKI TRIPS.

OUR FIRST TRIP IS SCHEDULED FOR LATE FEBRUARY '65.

MEMBERSHIP DUES - ONLY \$5 -

WILL BE ACCEPTED.

FOR MORE INFORMATION:

TOM CRONIN MO 6-3383  
ROLFE BEAUDRY CA 8-8221  
LES BENNETT MO 7-5700



# OFFICER GROUP SHOTS

## 24th Anniversary



### PAST PRESIDENTS

Back Row, left to right: *Bob Olsen, Sy Liebergot, Jim Benefield, Linda MacFarland-Simpson, Anne Benefield, Tania Andrasko, Tom Mercer.* Front Row, left to right: *Miles Anderson, Ron Crossman, Jerry Maley, Jim McIntyre, Harry Gaston.*



### VICE PRESIDENTS - PROGRAMS

Back Row, left to right: *Judy Allen, Tom Mercer, Lynn Burch, Rudy Guerrero.* Front Row, left to right: *Harry Bristol, Jerry Kearby, Layna Adams, Linda MacFarland-Simpson.*



Back Row, left to right:  
*Jim Benefield, Easy Thayer,  
Jim McIntyre, Dick Howard*

Front Row, left to right:  
*Miles Anderson, Ann Benefield,  
Eric Holm, Pat McLaughlin,  
Harry Gaston*

### VICE PRESIDENTS - TRIPS



### VICE PRESIDENTS - MEMBERSHIP

Back Row, left to right: *Sy Liebergot, Jerry Pyle.* Front Row, left to right: *Shirley Andries, Marty Matras, Jan Livingston, Ron Smith, Glenn Bishop.*



### SITZMARKE EDITORS

Back Row, left to right: *Diane Yarberry, Beth Nolen, Carol Ragan-Dutton.* Front Row, left to right: *Charla Merrill, Cynthia Lackey, Linda McDuffy, Tania Andrasko.*



### TREASURERS

Front Row, left to right: *Craig Meyer, Bob Tripp, Jim Plummer, Barry Kumins.* Back Row, left to right: *Bob Olsen, Linda Licarione, Don Lackey. ...and we trust people like these with our money???*



### SECRETARIES

Back Row: *Jane Kearby, Margaret Norris Guerrero, Janet Pickell, Linda Judge, Leona Schroeder, Karen Friedsam.* Front Row: *Mary K. Nicholson Fruth. Bob's just another pretty face.*



## NEXT MONTH

### AT MEETING:

#### ANNUAL FALL STYLE SHOW

*Sign-up with Shirley Lang  
at the October Meeting!*

### IN SITZMARKE:

- Recap of Road Rally
- Golf Tourney Results
- 2st SCSC Aspen Trip Article
- Hopefully a Snow Report
- Recommended By-laws Revisions

## 1989-90 TRIP STANDINGS

TRIP	Skiers	Signed-up	Waitlist
SNOWBIRD	60	43	4
ANGEL FIRE	40	39	6
SUMMIT I	40	32	2
SUMMIT II	40	FULL	1
SUMMIT III	40	FULL	6
SUMMIT IV	60	37	3
WOLF CREEK	26	18	6
WHISTLER	60	FULL	14
LAAX/FLIMS	30	13	N/A
SALT LAKE	32	19	4
PURGATORY	60	45	19
BIG SKY	38	FULL	23
HEAVENLY I	40	FULL	19
HEAVENLY II	40	FULL	15
HEAVENLY III	40	34	8

## BUY, SWAP, BORROW

*Mostly from SKI Magazine Buyer Guide 1990*

### BUY NEW?

#### Advantages:

- Assurance of quality.
- Equipment on hand when needed.
- Ability to select brand or model desired.

#### Disadvantages:

- Cost (although future trade-in value on new gear in good condition is high.)

#### How to Proceed:

- Shop early.
- Buy at shop which specializes in kids gear, which offers family trade-in programs and/or kids packages. (Good selection of junior gear is hard to come by at a sporting goods super-market. The few dollars saved may not pay off if the product or fit is wrong.)
- Patronize our Advertisers.

### SWAP?

#### Advantages:

- Ski swaps yield bargain-priced gear.
- Availability of hard-to-find items.
- Most gear, from skiing families, tends to be of better quality. Usually good clothing buys, but use caution in buying equipment.

#### Disadvantages:

- Equipment may be outdated, overused or unsafe.
  - Nonavailability of reliable advise.
- How to Proceed:**
- Bring along a knowledgeable friend.
  - Take equipment to reputable ski shop for skis/boots/bindings adjustment.
  - Buy through SCSC.

### BORROW?

#### Advantages:

- Cost (free).
- Best for clothing, not recommended for equipment, which will need adjustment.

#### Disadvantages:

- No assurance of proper fit.
  - Trips to shop for equipment adjustment.
  - Possibility of damage to borrowed equipment.
- How to Proceed:**
- Good way to lose a good friend if something happens to equipment.

#### How to Proceed:

- Know donor well.
- Have gear professionally adjusted, then readjusted to original setting of donor.

10175 Harwin, Suite 104  
Houston, Texas 77036

**C&L  
Specialties  
Co.** 

- T-Shirts • Jackets • Sweat Shirts • Caps • Sport Shirts
- Signs • Decals • Aprons
- Embroidery • Screen Printing
- Banners • Bumper Stickers
- Pens • Pencils • Posters

LEONA SCHROEDER

(713) 541-3130

For ALL Your  
Real Estate Needs  
Call

**Donna Kidwell, CRB**  
Multi-Million Producer

REALTY EXECUTIVES  
P. O. Box 570204  
Houston, TX 77257-0204  
713/499-7011





## SKI EXEC FORECASTS \$50 LIFT TICKETS

by Michelle Mahoney, Denver Post Business Writer

Ski lift tickets costing \$40 and even \$50 are on the horizon for Colorado's growing ski resorts, according to one of the industry's top marketing strategists.

It's all part of a transformation that the industry must undergo to survive amid escalating competition and a dwindling U.S. skier population, said Jerry D. Jones, president of Beaver Creek Resort and executive vice president of Vail Associates, Inc.

Multimillion-dollar expansions at major ski areas have brought about a sharp increase in lift-ticket prices, with many Colorado resorts charging \$35 or more.

Gone are the days of the "good old-boys network" in the early 1970s, when the "Ski the Rockies" organization of major Rocky Mountain resorts freely shared marketing information and strategies for boosting the ski industry.

Jones saw the mega-resort trend

coming early, and in 1974 when he was with Keystone, launched Summit County's highly successful "Ski the Summit" program. The joint marketing program kicked the Breckenridge, Keystone, Copper Mountain and Arapahoe Basin ski areas into the Colorado big leagues.

"At that time not one of the resorts could compete favorably with large resorts on an individual basis," Jones said. "But with their combined assets, they were very competitive."

Summit County now is Colorado's number one ski destination, with more annual skier days than all of Utah's ski areas combined.

In the next decade, expect to see:

- Indoor resorts, possibly in Florida, that feature slopes in an air-conditioned environment complete with snow. Japan has such a resort near Tokyo.

- Greater emphasis on direct air service to resorts from major U.S.

markets. Steamboat and Aspen, for example, already have direct service into local airports and Vail is planning to have direct service into the Vail/Eagle airport this winter, Jones said.

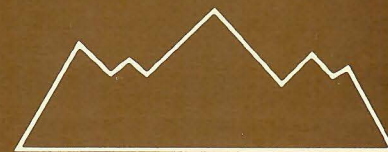
- Resorts that push diversification beyond the ski experience.

- Increased use of computer technology to track and regulate the number of skiers on the mountain. One spinoff could be "flex tickets," which could go for a higher price during peak periods like Christmas or spring break to reduce the daily skier population and maximize profits, he said.

- Special ski areas dedicated to snowboarders or telemark skiers.

While lift tickets almost certainly will rise, there also could be some unusual twists in pricing. For example, he said, as the U.S. population ages, long-time senior discounts could disappear. Instead, younger skiers may get discounts because there will be fewer of them.

Our Year  
Is Here



WINTER PARK

ANNIVERSARY  
1940 1990

Come Celebrate 50 Years  
Of Great Skiing With Us!

For Your Complete Winter Park Packages

WINTER  
PARK  
RESORT  
COLORADO

800-453-2525

Winter Park Central Reservations  
Box 36, Winter Park, CO 80482



# The Anniversary Times

SPACE CITY SKI CLUB

OCTOBER 12, 1964

## MUSICAL MEMORIES

I Want to Hold Your Hand ... Everybody Loves  
Somebody ... Love Me Do ... Oh Pretty Woman  
... Chapel of Love ... My Guy ... We'll Sing  
in the Sunshine ... Walk on By ... Twist and  
Shout ... P.S. I Love You ... I Get Around

## THE BEST IN ENTERTAINMENT

Best Movie	My Fair Lady
Best Actor	Rex Harrison
Best Actress	Julie Andrews
TV Shows	Petticoat Junction Dick Van Dyke Show
World Series	St. L. Cards over NY Yankees

## HEADLINES OF THE TIMES

Martin Luther King, Jr. is  
awarded Nobel Peace Prize of  
1964 ... Khrushchev is  
deposed as leader of USSR;  
Brezhnev and Kosygin replace  
him ... Large collection of  
precious gems stolen,  
including Star of India  
sapphire

PRESIDENT  
Lyndon B. Johnson  
VICE PRESIDENT  
(No vice pres.)

## THAT WAS THEN...THIS IS NOW

	1964	1989
3 Br. Home	\$15,425	\$87,345
Avg. Income	\$6,569	\$31,299
New Ford	\$3,233	\$11,689
Gas, 1 gal.	\$.30	\$1.15
Bread, 1 lb.	\$.21	\$.78
Milk, 1 gal.	\$1.06	\$2.17
Bacon, 1 lb.	\$.67	\$2.17

## WHAT ELSE WAS NEW?

Ford Mustang model introduced ...  
Verrazano Narrows Bridge opened, links  
Brooklyn & Staten Island ... Zip codes  
introduced by Postal Service ... NY  
Shea Stadium opened ... Electric  
knives, talking typewriter and  
photochromic (light sensitive) eye-  
glasses introduced ... The Kennedy  
replaced Franklin half dollar

## THOSE WERE THE DAYS

### 1964 -- SPACE CITY SKI CLUB FORMED

Elizabeth Taylor married Richard Burton ... Beatles appeared on ED SULLIVAN, at  
Carnegie Hall and made first movie A HARD DAY'S NIGHT ... Broadway hits: HELLO  
DOLLY and FIDDLER ON THE ROOF ... UNDERDOG with Simon Bar Sinister began on TV  
... Arnold Palmer won Master's Tournament in golf ... Watusi and Frug dances

### 1969 -- SPACE CITY SKI CLUB - FIFTH ANNIVERSARY

SESAME STREET began on TV ... Woodstock festival ... Smothers Brothers Comedy  
Hour canceled by CBS ... Bell-bottom pants ... Nixon presented Medal of Freedom  
to Duke Ellington ... SAT. EVENING POST ceased publication, began in 1821 ...  
Neil Armstrong on the moon: "One small step for man, a giant leap for mankind"

### 1979 -- SPACE CITY SKI CLUB - Fifteenth Anniversary

Anne Murray won Grammy for song YOU NEEDED ME ... Mother Teresa awarded Nobel  
Peace Prize ... Toys: Speak & Spell, Little Professor and children's books with  
scents ... Tracy Austin, 16, youngest US open tennis champion in history ...  
THE RIGHT STUFF by Tom Wolfe published ... International Year of the Child  
SPACE CITY SKI CLUB WON THE TEXAS CHALLENGE CUP



# THANKSGIVING ... The Start of Ski Season

**QUESTION:** What opened last year with a 39 inch base and had the **BEST POWDER** in late November last year?

**ANSWER: SNOWBIRD**

Last year the snow came the second week of November and **5 feet of snow** fell all at once. This year the outlook looks very good for the season. Especially with the early cold fronts hitting the North/Northwest this September.

The first trip of the ski season for SCSC and the TSC will be the Traditional Thanksgiving "Fall Round-Up" from November 22-26. Breaking away from the norm of going to a Colorado resort in November, Utah ought to be exciting and have plenty of snow. (*As the farther north you go, the better.*) **SNOWBIRD** is known to have the **driest and lightest** snow in the world. And what can be more fun than experiencing it with close to 800 Texans??

To increase your time on the slopes, we will be staying at a "SKI-IN SKI-OUT" resort hotel. The Cliff Lodge is a completely self contained pedestrian village which is the centerpiece of Snowbird. A full service hotel boasting 6 restaurants and clubs, and featuring a world class 27,000 square foot spa! (*Craig and Beverly have planned some surprises at the spa for us!*) The spa offers massage, herbal wraps and a complete beauty salon to pamper you after those great days of skiing you will have.

Inside Cliff Lodge, each luxurious unit has two queen beds. The glass-walled atrium, dining and foyer offer a breathtaking view of the slopes and mountain peaks. Imagine dining in the early evening and watching the majestic colors of the sunset dance on the mountains.

Skiing Snowbird gives all skiers a wide range of runs to choose from. There are **over 400 named runs**, with 50% advanced, 30% intermediate and 20% beginner. This covers 2100 skiable acres. One run (*Chip's Run*) is 3½ miles long. To get in maximum skiing, the resort has 7 double chair lifts, and a



125 passenger aerial tram. Believe it or not, our lift tickets will only be \$20.00 a day and that includes both the chairlifts and the tram!!

Daily complimentary mountain tours will be offered to acquaint us with all the ins and outs of the ski runs. If you are the more adventurous type, Snowbird offers Heli-skiing to some of the best virgin powder around.

Parties? Did you mention *parties*? Well, let me tell you... You will be able to attend some of the **best** parties of the year at Snowbird. Craig and Beverly have arranged to get the parties started the **first** night with a "Get to Know Everybody on Your Trip" party. Rumors have it that it might be at the spa. Thursday, TSC will put on a Welcome Party, with a Turkey Trot Theme and a Traditional Thanksgiving dinner (*dinner is an additional \$10.00*). This will include a Buffet and a Dance! Entertainment will be provided by "The Bachelors" who play top 40's music. Friday we will plan to meet on the slopes for a Wine and Cheese party after our 16 gate NASTAR, Texas Ski Cup Challenge Series race. Friday night, meet with friends and go to one of the 15 restaurants Snowbird has to offer.

Saturday is Individual Race Day with a 24 gate course. The highlight of the TSC Fall Round-Up, the **Awards Party**, will take place Saturday evening. The theme for this is *Hawaiian Luau*. It will start at 7:30 with a reception featuring hot and cold hors d'oeuvres and the traditional **lite beer** from Miller. The band "Walter and Hayes" will play just about anything you want. There will be awards for the club with the most original Luau dress. Prizes will also be awarded to the best

male and female hula dancers, so brush up on your hula. Also a limbo contest will be conducted. The best award will be to the club that wins the races ... **SCSC???**

If you haven't gotten your fill of skiing, you still have time to do ½ day on the slopes Sunday. Our flight time will allow you to get in those last runs on Sunday. We should be back into Houston by 10:30 p.m. Also, by leaving Houston early Wednesday morning to go to Snowbird, you only need to take off "1" day of vacation time, and not worry about sneaking out of work early Tuesday to catch an early evening flight!!

All this for only \$474.00! SCSC offers the **lowest** trip price to Snowbird of any of the surrounding TSC clubs. The trip is planned to take 60 SCSC members to Snowbird. There are only a **FEW** spots remaining. To catch your place on the EXCITING "FALL ROUND-UP," call:

TC: Craig Tharpe (H) 665-0189  
ATC: Bev Merritt (H) 721-7814

**SPONSORS OF 1989-1990  
TEXAS SKI COUNCIL**

**Retail Concepts**


















# EDDIE'S BALLROOM

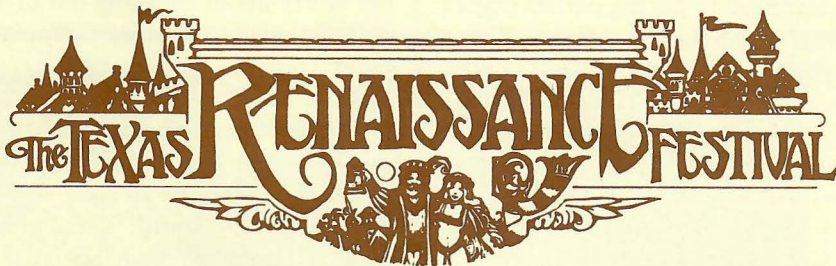
by Bonnie Hughes

On July 22, about fifty people made the trek to the boonies of Manvel, Texas to enjoy a night of country-western dancing. Even with all the explicit directions given, **Ron and Roberta Rambin** thought they had a better route which led them to a dead end street and miles out of the way.

John Thayer, Terry Cummings, Dick Howard and Beverly Merrit came early and claimed our tables for us. For those who didn't have reservations, it didn't matter because no one sat down; this annoyed the ballroom management who tried to get our group under control numerous times but with little success. They appealed to the group leader for help but had no idea what they were asking. If our reputation is ruined, at least "Bay City Ski Club" will be blamed and not "Space City Ski Club." **Bill Kirk** finally made his



A.G. Davis, Sue Bohnert, Peggy Donley and Jerry Montgomery share a joke.



**NOVEMBER 4**

**9 a.m. to 7 p.m. • \$24.00 per person**

*Leave your cares and the 20th century behind as we journey into a mystical 16th century renaissance fair. Our day begins with an eye-opening breakfast of donuts and drinks in our festive chariot. We will bypass ticket lines as we are ushered through the transforming gates to the fair where we will mingle amongst magicians, jugglers, dancers, wenches and knights. We will partake of roasted turkey legs, apple dumplings and sweet breads as we enjoy the entertainers and browse the shops full of hand-crafted wares. After a full day of frolic, we will relax with a cold beer or soft drink on our leisurely return home.*

Make checks payable to SCSC and mail to:  
**GAYLA CAWOOD** - 2700 Rolido, Houston, Texas 77063  
 (H) 781-1183 (W) 871-1100, ext. 231

NAME: \_\_\_\_\_ # OF PERSONS \_\_\_\_\_

ADDRESS: \_\_\_\_\_

PH. \_\_\_\_\_

appearance at 11:00 after having to be told the dance was not from 5-8; seems he didn't read his own flyer that he handed out at Happy Hour. We really didn't stand around drinking all night, most of us did dance - except maybe **John Rice, Sharon Griffin, Gary Sequiera, Dawn Pyle and Vern Oliver** who helped finish the snacks and close the place down.



Clara Gerstenberger and John Rice smile for the camera!

More Photos on page 27.



# DIRECTORY OF PAST OFFICERS

**ADAMS, Eliza Jane**..... Secretary 1969-70  
**ADAMS, Layna**..... DOT 1974-75  
 VP-Programs 1975-76, VP-Publications 1985-86  
 5610 Duxbury, Houston, TX 77035 (H) 723-3236  
**ADAMS, Peggy**..... Secretary 1968-69  
**ADAMS, Winton B.**..... VP-Programs 1972-73  
 1462 Oak Tree, Houston, TX 77055, 468-0132  
**AHRENS, Wayne G.**..... VP-Programs 1974-75  
 7434 Tunbury Lane, Houston, TX, (H) 463-8661  
**AITKIN-BECKHAM, Tiny**..... VP-Membership 1979-80  
 5060 Augusta St., Houston, TX 77007, (H) 864-4235, (W) 626-9483  
**ALLEN, Judith A. (Judy)**..... DOT 1977-78, VP-Programs 1978-79  
 3771 Jardin, Houston, TX 77005, (H) 664-9277, (W) 220-4328  
**ALLEGIER, Robert**..... VP-Trips 1975-76, President 1978-79  
 16532 Kentwood, Houston, TX 77058, (H) 488-0397, (W) 282-1969  
**ANDERSON, Miles**..... VP-Membership 1965-66, President 1966-67  
 11606 Manor Park Dr., Houston, TX 77077, (H) 496-7848  
**ANDRASKO, Tania Day**.... VP-Publications 1982-83, President 1983-84  
 1321 Chantilly Ln., Houston, TX 77018, (H) 688-6556  
**ANDRIES, Shirley H.**..... VP-Membership 1978-79  
 11907 Brook Meadows, Stafford, TX 77477, (H) 879-9663, (W) 579-4700  
**BALDWIN, Tom F.**..... VP-Trips 1974-75  
 711 S. Second St., LaPorte, TX 77571, 471-8549  
**BALL, Debbie W.**..... DOT 1983-84  
 3508 Calderwood Place, Colorado Springs, CO 80918, (303) 598-8915  
**BARLOW, Sam**..... Treasurer 1968-69  
 2245 Triway, Houston, TX 77043, 465-1355  
**BARNETT, Edward Henry**..... Treasurer 1985-86  
 4116 Joshua Ln., Dallas, TX 75252, (H) (214) 248-4392, (W) (214) 239-9500  
**BATTEN-BISHOP, Ann**..... DOT 1985-86, VP-Programs 1986-87  
 7754 Park Falls Dr., Houston, TX 77095, (H) 855-1615  
**BEAUDRY, Rolfe**..... VP-Programs 1964-65  
 VP-Programs 1965-66, 1st VP 1966-67, President 1967-68  
 200 Bay Colony Dr., Houston, TX, (H) 470-9067, (W) 236-3062  
**BELL, Janis (Hughen)**..... VP-Publications 1975-76  
 8464 Winningham, Houston, TX, (H) 465-9914, (W) 556-2269  
**BENEFIELD, Anne**..... DOT 1979-80  
 VP-Trips 1980-81, President 1981-82  
 1881 Bering Dr. #68, Houston, TX 77057, (H) 780-4019, (W) 241-6318  
**BENEFIELD, Jim**..... VP-Trips 1976-77, President 1977-78  
 952 Echo Lane, Suite 375, Houston, TX 77024, (H) 984-8108, (W) 461-0683  
**BENNETT, Les**..... VP 1964-65, VP-Trips 1966-67  
**BISHOP, Glenn**..... DOT 1982-83, VP-Membership 1983-84  
 7754 Park Falls Dr., Houston, TX 77095, (H) 855-1615  
**BLALOCK, Virginia D.**..... Secretary 1971-72  
 11707 Hazen, Houston, TX 77072, (H) 495-0112  
**BOHNERT, Sue E.**..... Secretary 1981-82  
 P. O. Box 800055, Houston, TX 77280, (H) 467-5027, (W) 868-0448  
**BRIDGMAN, Jeanne F.**..... VP-Membership 1973-74  
 6417 Rutgers, Houston, TX 77005, 666-3269  
**BRISTOL, Harry**..... VP-Programs 1969-70  
**BROAD, Kay**..... VP-Programs 1983-84  
 3402 Oyster Cove, Missouri City, TX 77459, (H) 499-4710, (W) 780-1169  
**BRYANT, Dick**..... DOT 1989-90  
 7827 Terra Cotta, Houston, TX 77040, (H) 937-7533, (W) 751-7846  
**BURCH, Lynn**..... DOT 1980-81, VP-Programs 1981-82  
 6634 Gladewell, Houston, TX 77072, (H) 933-2169  
**CAMERO, Arthur A.**..... Treasurer 1983-84  
 7810 Braesdale Ln., Houston, TX 77071, (H) 772-3534, (W) 493-8277  
**CASTILLE, Jay (Deceased)**..... VP-Trips 1968-69  
**CHILES, Jerry E.**..... President 1971-72  
 One West Loop South #818, Houston, TX 77027, (W) 629-1450  
**CHRISMAN, Marjean (Doucette)**..... VP-Membership 1969-70  
 #6 Bendwood Circle, Sugar Land, TX 77478, (H) 242-3068, (W) 596-6873  
**CHRISSINGER, Debbie**..... VP-Publications 1989-90  
 11710 South Lake #23, Houston, TX 77077, (H) 870-0115, (W) 524-3464  
**CLEMENTS, Cheryl A.**..... DOT 1987-88  
 VP-Trips 1988-89, VP-Trips 1989-90  
 1614 N. Hearthside, Richmond, TX 77469, (H) 341-6809, (W) 658-8881

**COOK, Jane (McCormick)**..... Secretary 1976-77  
 5218 Braeburn, Bellaire, TX 77401, (H) 666-2284  
**COOK, John E.**..... DOT 1982-83, VP-Trips 1983-84  
 Box 52650, Houston, TX 77052, (H) 448-5012, (W) 999-0070  
**COTRONE, Joe C.**..... DOT 1979-80  
 4601 Staunton, Houston, TX 77027, (H) 552-0112, (W) 940-1409  
**CRONIN, Tom**..... President 1964-65, President 1965-66  
 5419 Willers Way, Houston, TX 77056, (H) 621-8937  
**CROSSMAN, Ron**..... President 1969-70  
 2006 Echo Ridge Court, Kingwood, TX 77339, (H) 358-2348  
**CRUSE, Robert W.**..... DOT 1986-87, VP-Programs 1989-90  
 3118 Mosby Dr., Sugar Land, TX 77479, (H) 265-0631, (W) 495-9411  
**DAIL, Ed**..... VP-Programs 1967-68  
**DOMINY, Kenneth W.**..... VP-Trips 1977-78  
 5023 Spruce Forest Dr., Houston, TX 77091, 680-0124  
**DOULETTE, Don**..... VP-Publications 1964-65  
**EASTIN, Keith E.**..... VP-Trips 1978-79, President 1979-80  
 Box 70280, Washington, D.C. 20024, (H) (703) 920-9118, (W) 692-3227  
**EATON, Harold A.**..... DOT 1985-86, VP-Membership 1986-87  
 5319 Jason St., Houston, TX 77096, (H) 664-6970, (W) 228-9211  
**EATON, Lynn L.**..... VP-Programs 1988-89  
 5319 Jason St., Houston, TX 77096, (H) 664-6970, (W) 792-3335  
**ELSTON, Jay**..... Treasurer 1969-70  
**FIELDER, Cindy Garrett**..... VP-Trips 1986-87, TSC 1988-89  
 1340 Wakefield, Houston, TX 77018, (H) 956-8892  
**FORD, Barbara**..... VP-Membership 1966-67  
**FRAZIER, Melissa A.**..... Treasurer 1987-88  
 1504 Harold, Houston, TX 77006, (H) 524-0828, (W) 659-6551  
**FRIEDSAM, Karen D.**..... Secretary 1983-84  
 1815 Woodcrest, Houston, TX 77018, (H) 682-5426, (W) 932-3768  
**GARRETT, Cynthia**..... DOT 1984-85, TSC 1987-88  
**GASTON, Harold J., Jr. (Harry)**... VP-Trips 1973-74, President 1974-75  
 1100 Milam Bldg., Ste. 3200, Houston 77002, (H) 467-7324, (W) 651-9191  
**GOLDBERG, Jerry K.**..... Treasurer 1973-74  
 2614 Cason, Houston, TX 77005, (H) 663-7006  
**GOSS, Nancy (Ainsworth)**..... DOT 1976-77  
 12015 Circle Dr., Houston, TX 77071, (H) 541-4450  
**GRANDA, Manuel R. (Mo)**..... VP-Trips 1981-82  
 226 Snover, Houston, TX 77007, (H) 863-1636  
**GRANLUND, Scott**..... 1st VP 1970-71  
 2142 Parkdale Rd., Humble, TX 77338, (H) 358-3461  
**GRASSMAN, James R. (Jim)**..... President 1972-73  
**GRONA, Louise Elizabeth (Lea)**..... VP-Programs 1976-77  
 5630A Birchmont, Houston, TX 77091, 683-7285  
**GUCKER, Stephen E. (Steve)**..... DOT 1981-82  
 13106 Elysian Fields, Austin, TX 78727, (512) 244-0479  
**GUERRERO, Blaise B.**..... DOT 1986-87  
 TSC 1987-88, Treasurer 1989-90  
 505 Boone Court, Deer Park, TX 77536, (H) 479-1678, (W) 475-2773  
**GUERRERO, Margaret (Norris)**..... Secretary 1982-83  
 Clear Lake, TX  
**GUERRERO, Rudy A.**..... VP-Programs 1984-85  
 Clear Lake, TX, (H) 480-3384  
**HANKS, Floyd**..... DOT 1988-89  
 1906 Meadow Creek, Pearland, TX 77581 (H) 485-6135, (W) 845-4596  
**HEIMAN, John**..... Treasurer 1966-67  
**HOGGE, Bill**..... VP-Trips 1967-68  
**HOLDER, Pam**..... Sec. 1986-87, VP-Trips 1987-88, President 1988-89  
 7702 Braeburn Valley Dr., Houston, TX 77088, (H) 988-1075  
**HOLLOWAY, Don (Deceased)**..... VP-Programs 1968-69  
**HOLM, Eric**..... DOT 1981-82  
 VP-Trips 1982-83, TSC 1984-85, 1985-86, 1986-87  
 5630 Bent Bough Ln., Houston, TX 77088, (H) 591-7669, (W) 274-5156  
**HOWARD, Ginger L.**..... Secretary 1988-89  
 9107 Bankside, Houston, TX 77031, (H) 772-2196, (W) 790-0916  
**HOWARD, Richard H.**.... DOT 1983-84, TSC 1983-84, VP-Trips 1984-85  
 668 N. Eldridge, Houston, TX 77079, (H) 496-6191, (W) 870-6207  
**JACKSON, Mary Beth**..... Secretary 1970-71  
**JOHNSON, Ginger**..... Secretary 1964-65, 1965-66

Cont'd on pg. 26



**JUDGE, Linda**..... Secretary 1974-75  
4243 Emory, Houston, TX 77005, (H) 665-4422, (W) 995-1562

**KEARBY, Jerry**..... VP-Programs 1973-74  
2507 Bissonnet, Houston, TX 77005, (W) 521-9878

**KIRCHER, Omer**..... Treasurer 1965-66

**KIRK, Bill**..... DOT 1984-85  
VP-Trips 1985-86, President 1987-88, TSC 1989-90  
10403 Forum Park Dr. #534, Houston 77036, (H) 774-5474, (W) 452-8013

**KOPPEL, Tanny (Calif.)**..... Public Relations Director 1971-72

**LACKEY, Cynthia**..... VP-Publications 1978-79  
8552 Katy Freeway, Houston, TX 77024, (H) 973-7627, (W) 872-7717

**LACKEY, Don**..... Treasurer 1972-73  
8552 Katy Freeway, Suite 130, Houston, TX 77024, (W) 827-7717

**LICARIONE, Linda C.**..... Treasurer 1984-85  
8814 Croes Dr., Houston, TX 77055, (H) 468-2816, (W) 235-2491

**LIEBERGOT, Sy**..... DOT 1974-75  
VP-Membership 1975-76, President 1976-77  
10611 Sandpiper, Houston, TX 77096, (H) 776-9754, (W) 483-0504

**LIVINGSTON, Jan.**..... VP-Membership 1981-82, VP-Programs 1985-86  
11426 Hillcroft, Houston, TX 77035, (H) 723-1331

**MALEY, Gerald A. (Jerry)**..... Treasurer 1967-68, President 1970-71  
246 Sugarberry Circle, Houston, TX 77024, (H) 784-4814, (W) 522-6655

**MARWIN, Bob**..... Treasurer 1976-77  
P.O. Box 428, Arlington Heights, IL 60006

**MATRAS, Martin A. (Marty)**..... VP-Membership 1980-81  
5856 Village Forest Ct., Houston, TX 77092, (H) 681-9315, (W) 974-6161

**MATTHEWS, Diane**..... VP-Publications 1974-75  
17810 Theisswood, Houston, TX, (H) 376-8819

**MAUGHS, Bruce**..... Treasurer 1981-82, President 1982-83  
5004 Dickson #2, Houston, TX 77007, (H) 861-2037, (W) 546-6706

**MAVAR, Sammie Lou**..... VP-Membership 1968-69

**McDUFFIE, Linda**..... VP-Publications 1976-77  
623 S. Ripple Creek, Houston, TX 77057, (H) 461-5401, (W) 695-1125

**McINTYRE, James W. (Jim)**..... VP-Trips 1972-73  
President 1973-74, TSC 1983-84, TSC 1984-85  
2277 S. Kirkwood #1003, Houston, TX 77077, (H) 558-5617, (W) 556-3283

**McINTYRE, Margie**..... VP-Membership 1967-68

**McLAUGHLAN, Pat B.**..... VP-Trips 1971-72  
5207 Pine, Bellaire, TX 77401, (H) 661-2974, (W) 483-9225

**MEADEN, Peter E.**..... Treasurer 1986-87  
5871 Doliver Dr., Houston, TX 77057, (H) 784-5829, (W) 778-9700

**MERCER, Tom**..... DOT 1978-79  
VP-Programs 1979-80, President 1984-85  
7702 Braeburn Valley Dr., Houston, TX 77088, (H) 988-1075

**MERREL, Charla Lee**..... VP-Publications 1984-85  
12205 Sandpiper, Houston, TX 77035, (H) 726-0329, (W) 749-8822

**MERRITT, Jean R.**..... Public Relations 1973-74  
5008 Westbriar #1, Houston, TX 77027, (H) 627-0359

**MEYER, Craig F.**..... DOT 1977-78, Treasurer 1979-89, Treasurer 1982-83

**MILLER, R. Darwin**..... Treasurer 1970-71  
16419 Havenpark, Houston, TX 77059, (H) 488-3566

**MONTGOMERY, Jerry**..... VP-Programs 1987-88, President 1989-90  
P.O. Box 36178, Houston, TX 77236, (H) 437-5467, (W) 498-0810

**MORGAN, Jane**..... Secretary 1972-73  
2507 Bissonnet, Houston, TX 77005, (W) 521-9878

**MURPHY, Joe**..... VP-Membership 1987-88  
14 Sleepy Oaks Circle, Houston, TX 77024, (H) 468-1638

**NAUDAIN, Raymond W.**..... DOT 1987-88, Treasurer 1988-89  
5663 Birchmont E., Houston, TX 77091, (H) 683-3890

**NEU, Jeanne L.**..... VP-Membership 1974-75  
1530 Beaconsire, Houston, TX 77077, (H) 531-6303, (W) 293-1456

**NEVELS, Brenda Kay**..... Secretary 1973-74  
101 Mt. Salus A5, Clinton, MS 39056

**NICHOLSON, Mary K.**..... Secretary 1978-79  
7952 Locke Lane #1, Houston, TX 77063, (H) 977-2194, (W) 940-9156

**NIELSEN, Robert P.**..... VP-Membership 1989-90  
802 Soboda Court, Houston, TX 77079, (H) 496-1345, (W) 493-7326

**NIX, Barbara**..... 3rd VP 1970-71

**NOLEN, Beth B.**..... VP-Publications 1979-80, VP-Publications 1988-89  
11002 Hammerly #194, Houston, TX 77043, (H) 468-4268, (W) 627-5973

**OLSEN, Robert J. (Bob)**..... Treasurer 1974-75, President 1975-76  
1938 Albans Road, Houston, TX 77005, (H) 524-2730

**PETNER, Robert A.**..... VP-Programs 1980-81  
822 Highland, Houston, TX 77009, (H) 862-5670, (W) 926-4703

**PICKELL, Janet C.**..... Secretary 1975-76  
1431 Fountainview, Houston, TX 77057, (H) 789-6974, (W) 978-2052

**PLUMMER, Jim**..... Treasurer 1975-76  
5867 Doliver Dr., Houston, TX 77057, (H) 780-9461, (W) 497-6200

**PYLE, Jerrold M.**..... VP-Membership 1984-85  
1604 Sheridan Rd., Pasadena, TX 77502, (H) 480-6851, (W) 474-6534

**PYLE, Pam**..... VP-Programs 1982-83  
11026 Wax Wing, Houston, TX 77035, (H) 729-2916

**RAGAN-DUTTON, Carol**..... VP-Pub. 1981-82, VP-Publications 1987-88  
2429 Goldsmith, Houston, TX 77030, (H) 664-1717, (W) 963-3468

**RAMBIN, Ron E.**..... 2nd VP 1970-71  
302 West Alkire Lake Dr., Sugar Land 77476, (H) 242-2796, (W) 661-7665

**RAMSEY, Susan**..... VP-Membership 1972-73  
272 Fawn Trail, Lake Jackson 77566, (H) (409) 297-8898, (W) 238-9x53

**REITZE, Dave M.**..... DOT 1980-81  
1547 W. Belt Dr. South, Houston, TX 77042, (H) 789-1938

**RENTFRO, Wayne**..... VP-Trips 1969-70  
4711 Saddle Drive, Rosenberg, TX, (H) 342-3469

**RICE, John C.**..... DOT 1989-90  
11606 Brookledge, Houston, TX 77099, (H) 530-2517, (W) 630-6610

**RIESENBERG, Frank W.**..... VP-Membership 1977-78  
8901 Braesmont #303, Houston, TX 77096, (H) 660-8971

**ROGERS, Sheryl**..... Secretary 1979-80

**ROONEY, Gloria**..... DOT 1988-89, Secretary 1989-90  
16526 Teak Drive, Missouri City, TX 77489, (H) 499-4413, (W) 274-3540

**RUNFALO, Finn**..... DOT 1976-77  
1503 Airline, Houston, 861-7653; 5527 Chantilly, Houston, 680-9258

**SANFORD, Marty**..... Public Relations 1969-70

**SCHENCH, Merry Merritt**..... Public Relations Dir. 1972-73

**SCHMID-FAULKNER, Vicki**..... VP-Publications 1980-81  
806 West 31st, Houston, TX 77018, (H) 863-0470, (W) 241-4598

**SCHROEDER, Leona S.**..... Secretary 1980-81, Secretary 1987-88  
12402 Rip Van Winkle, Houston, TX 77024, (H) 468-4609, (W) 541-3130

**SEBESTA, Dan**..... Treasurer 1971-72  
6320 First St., Bellaire, TX 77401, (H) 664-6199

**SIMPSON, Linda MacFarland**..... VP-Programs 1977-78, President 1980-81  
5214 Jackwood, Houston, TX 77096, (H) 666-3638, (W) 953-3806

**SMITH, Ron C.**..... VP-Membership 1982-83, President 1985-86  
11962 Brook Meadows Ln., Stafford 77477, (H) 879-8240, (W) 676-3701

**SYSAK, Phyllis C.**..... Secretary 1984-85  
5711 Sugar Hill, Houston, TX 77057, 783-8071

**TAYLOR, Ed (South Carolina)**..... Treasurer 1977-78

**TESTA-SALHOOT, Joyce**..... VP-Membership 1971-72  
3716 Farbar, Houston, TX 77005, (H) 666-1004

**THAYER, John C. (Easy)**..... DOT 1978-79, VP-Trips 1979-80  
5654 Edith, Houston, TX 77081, (H) 995-0502, (W) 238-4914

**TRIMBLE, E. Duff**..... DOT 1975-76, VP-Membership 1976-77  
2030 Kipling, Houston, TX 77098, (W) 529-2608

**TRIPP, Robert Glenn (Bob)**..... Treasurer 1980-81  
811 Heathcliff Court, Houston, TX 77024, (H) 467-0569, (W) 546-8643

**TULLY, Dianne Barney**..... Secretary 1985-86  
10320 Gladewood, Houston, TX 77041, 466-6359

**TURBOFF, Gene M.**..... Treasurer 1978-79  
5803 Sugar Hill, Houston, TX 77077, (H) 977-1196, (W) 993-7261

**UNDERWOOD, Bev (Benefield)**..... Secretary 1977-78  
3107 Jewel Ann, Houston, TX, (H) 589-6950

**VASEN, Bill**..... VP-Membership 1988-89  
17114 Bougainvillea, Friendswood, TX 77546, (H) 482-5501

**WALKE, Jean**..... VP-Publications 1983-84  
528 West 32nd St., Houston, TX 77018, (H) 861-9510, (W) 977-1441

**WILBANKS, Robert L. (Bob)**..... VP-Publications 1986-87  
2407A South Victor, Aurora, CO 80014, (H) (303) 721-6779

**WILLIAMS, Ed E.**..... VP-Programs 1971-72  
105 S. Ripple Creek #34, Houston, TX 77057, (H) 932-7553

**WISE, Gordon**..... VP-Membership 1985-86, President 1986-87  
134 Stoney Creek, Houston, TX 77024, (H) 827-1443, (W) 652-7040

**WRIGHT, Bill**..... President 1968-69

**WRIGHT, Cynthia G.**..... DOT 1975-76  
614 Woodbine, Houston, TX 77017, 641-3766

**YARBERRY, Diane**..... VP-Publications 1977-78  
10049 West Park #138, Houston, TX 77042, (H) 784-4441, (W) 520-9494



# PHOTOS FROM EDDIE'S BALLROOM... Cont'd from pg. 25



*Rosanne Clark and Vern Oliver discuss going out to the dance floor as Floyd Hanks looks on.*



*Sharon Griffin and Gary Sequiera having a great time!*



*Beverly Merritt, Dick Howard, Dave Rosenthal and Clara Gerstenberger utilizing the tables to take a quick rest.*



*Ray Naudain, Rosanne Clark, Bev Merritt and Dick Howard smile for the camera as Easy Thayer, Melinda Jelks and Ted Bergeron try to catch the action!*

## ROOMMATE WANTED

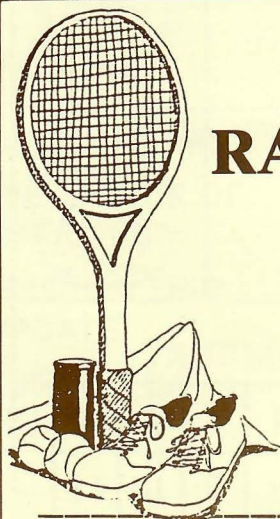
3 bedroom - 2 bath house in Spring Branch. \$200.00 month plus utilities.

**MANOLO VALLE • 464-4066**

## ONE BEDROOM CONDO

Newcastle/Galleria Area. Utilities and Cable Paid. Fireplace, Washer/Dryer, Security Covered Parking. \$445.00 month

**Owner: Manolo Valle • 464-4066**



## 1989 SCSC RACQUETBALL TOURNAMENT

**SATURDAY, NOVEMBER 18**

**Bay Area Racquet Club**

15503 Zabolio • 145 South at El Dorado

6:00 P.M. - 11:00 P.M.

**\$15.00 • TROPHIES AWARDED**

**SNACKS, BEER, GATORADE PROVIDED**

*ENTRY DEADLINE NOVEMBER 13, 1989*

Return this form with your check for \$15.00 (made payable to SCSC) to:

**BONNIE HUGHES**

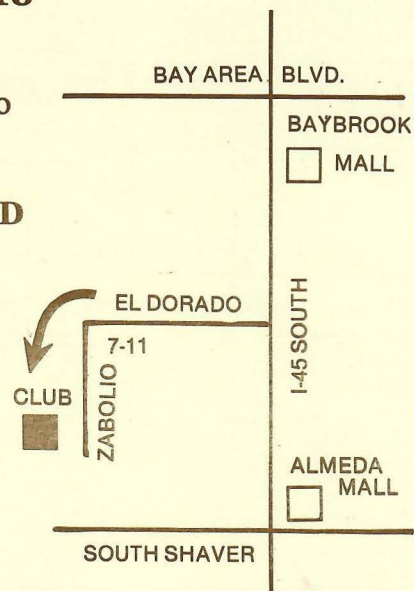
10223 Kirkglan, Houston, Texas 77089 - (H) 481-8301

MALE ☐ FEMALE ☐ Level of Play \_\_\_\_\_

NAME: \_\_\_\_\_

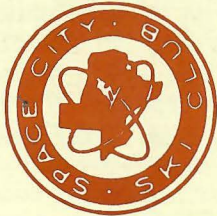
ADDRESS: \_\_\_\_\_

PHONE: (O) \_\_\_\_\_ (H) \_\_\_\_\_





Space City Ski Club  
P. O. Box 22567  
Houston, Texas 77227



**SITZMARKE**

**October, 1989**

**BULK RATE  
U.S. POSTAGE  
PAID  
PERMIT NO. 9036  
HOUSTON, TEXAS**

**DATED MATERIAL — DO NOT DELAY**

SUNDAY	MONDAY	TUESDAY	WEDNESDAY	THURSDAY	FRIDAY	SATURDAY
1  <b>GOLF TOURNAMENT</b>	2  <b>\$ FINAL PAYMENT SNOWBIRD</b>	3	4  <b>EXECUTIVE COMMITTEE MEETING</b>	5	6	7
8	9  <b>SCSC GENERAL MEETING SKI/SWAP AUCTION Crowne Plaza</b>	10	11	12	13	14
15	16	17	18	19  <b>HAPPY HOUR LANDRY'S 5:00-8:00 p.m.</b>	20	21  <b>ANNIVERSARY PARTY SKI FEST</b>
22  <b>SKI FEST</b>	23	24	25	26  <b>\$ FINAL PAYMENT ANGEL FIRE</b>	27	28  <b>HALLOWEEN PARTY "MORGAN CASTLE" 7:30 P.M.</b>
29	30	31				

**NOVEMBER**

			1	2	3	4
5	\$6	7	8	9	10	11
12	\$13	14	15	16	17	18
19	20	21	22	23	24	25
26	27	28	29	30		

**COMING ATTRACTIONS**

**NOVEMBER**

November 4..... Renaissance Festival  
November 13..... GENERAL MEETING - Style Show  
November 16..... Happy Hour - Jalapenos on Kirby  
November 18..... Racquetball Tournament  
November 22-26..... TSC Fall Round-Up to Snowbird

*November 6 - Final Payment for Summit*

*November 13 - Final Payment for Wolf Creek*