



sitzmarke
july 1976



space city ski club

1976-1977 OFFICERS

SY LIEBERGOT 869-0291
President

JIM BENEFIELD 626-0150
Vice President - Trips

LEE GRONA 493-5788
Vice President - Programs

DUFF TRIMBLE 529-2608
Vice President - Membership

LINDA McDUFFIE 644-6241
Vice President - Publications

JANE McCORMICK 664-9567
Secretary

BOB MARWIN 772-4039
Treasurer

EXECUTIVE BOARD MEMBERS

Current Officers Listed Above

Layna Adams	Jim McIntyre
Bob Allgeier	Kay Nevels
Harry Gaston	Bob Olsen
Jim Grassman	Janet Pickell
Janis Huguen	Jim Plummer

SITZMARKE STAFF

PUBLISHER
Space City Ski Club

EDITOR
Linda McDuffie

PHOTOGRAPHER
Pat McLaughlan

CONTRIBUTORS
Jim McIntyre
Roy Nice
Barbara O'Neal

MONTHLY FEATURES
Beth Nolen
Sy Liebergot

MARKEMAKERS
HEAD OF THE LIFT LINE

The Sitzmarke is published monthly by the
SPACE CITY SKI CLUB

VOLUME 9, Number 3

JULY 1976

2

CALENDAR

JULY 17 ANNUAL SUMMER BASH

JULY 31 REDFISH ISLAND SAILING

AUGUST 21-22 LAFAYETTE HORSE RACES

SEPTEMBER 4-5 COWBOY-OILERS GAME

OCTOBER 3 PRISON RODEO

OCTOBER 29-30 BACK-TO-NATURE CAMPOUT



FOR SALE: Men's Nordica
Ski Boots, 9½ M. Worn once. Original price \$90.00. Will take \$50.00.
Call Floyd Walling at 661-6797,
office from 9 to 5.

— SITZMARKE DEADLINES —
July 15, 1976
August 19, 1976
September 23, 1976

membership
renewal

now
due

head of the lift line



By Sy Liebergot

Summer seems to be a literary desert upon which words do not grow.....I recently had a unique experience - skiing in Houston. This is not meant to be a plug, but Ski Houston is the name and skiing on a moving rug ramp is their game. It's not inexpensive, but it can provide a rank beginner with a "first taste" of snow skiing as well as provide genuine preparation of skills

for the slopes. The moving ski ramp also may be used by more accomplished skiers to sharpen their skills. It's a trip!

Summer activity STUFF is upon us. By now, the canoe trip and bike ride are both successful history. The two biggies in July are the annual summer bash/picnic/luau and the Redfish Island sailing excursion. Send in your money NOW; this is especially critical for the picnic.

Personal congratulations to Nancy Ainsworth and Finn Runfalo for being approved as trip directors by the Board of Directors. In this capacity, their primary duties will be to assist Jim Benefield in administering all aspects of the 13 or 14 ski trips planned for this year.

Speaking of next ski season, look for trips to Salt Lake City, Jackson Hole, Aspen, Steamboat Springs, Breckenridge, Crested Butte, Vail, Telluride, Lake Tahoe, Winterpark, Copper Mountain and others.

Congratulations are also in order to Kay Nevels who has been

installed as a member of the Board of Directors. Kay will bring much experience in Club operations to the Board's deliberations.

The annual agony of the budget is complete. I'm pleased to report that a balanced budget has been approved by the Board of Directors. Bob Marwin, our financial Maji, did an excellent job of pulling the budget together as well as in leading the "reading" of the budget. In the coming months, the Sitzmarke will carry information from Bob on how, through financial wizardry, SCSC has maintained a healthy financial posture. One of these items will explain how your membership dues are spent.

Speaking of DUES, as you may have noticed, the new membership application form is appearing in each of the summer Sitzmarkes. This is a gentle reminder its DUES RENEWAL TIME, folks -- do it before August 1 and save \$2.00!

board meeting

Chairman Bob Olsen convened the Board of Directors on June 14. Kay Nevels was approved as a Director in order to fill a vacant Board position. Nancy Ainsworth and Finn Runfalo both were approved as the two Trip Directors for 1976-77. Miles Anderson presented his subcommittee's recommendations for changes to the Trip Director's responsibilities. He recommended that two TD's be permitted this year but this be reduced to one beginning in 1977-78.

A balanced budget for Club operation in 1976-77 was approved. the budget discussion resulted in two significant changes:

- Only one (instead of two) membership directory will be produced.
- The \$2.00 guest fee charged at the monthly regular meetings was raised to \$3.00. The Board voted to change the Club Standing Rules (Section IA) to reflect the increase.

Finally, a study will be made of the present membership limit of 1400 to determine if this limit should be increased and if so, when.

CLUB



PURGATORY

5757 WESTHEIMER

Club Purgatory's warm, congenial atmosphere will make you feel at home. Gather around our cozy fireplaces. Whether you come to dance, have cocktails, or enjoy the game room, you'll be among friends. Happy Hour is 5:00 to 8:00 p.m. Monday thru Friday with 2 for 1 drinks and complimentary hors d'oeuvres. Hungry? Club Purgatory's Hot Sandwiches really hit the spot for lunch or anytime during club hours 11:00 a.m. to 2:00 a.m.

Come to Club Purgatory in the corner of Westheimer Plaza (between Chimney Rock and Fountainview) and join your friends.

1976-77 trip directors



Nancy Ainsworth and Finn Runfalo

Nancy Ainsworth, one of our two Trip Directors for 1976-1977, is one of those rare creatures -- a native Houstonian. After graduating from the University of Houston

where she majored in speech and psychology, Nancy became interested in the field of stocks and bonds and is currently with Rotan Mosle Inc. She is also a licensed real estate broker.

When not at work or on the ski slopes, you might find her at Methodist Hospital where she has been a volunteer for five years or white-water canoeing in the Texas hill country with the Down Hill Yacht Club. In more quiet moments you will find her enjoying one of her great passions, music.

Nancy has been a member of SCSC for four years and has taken trips with the Club to Purgatory, Telluride and Steamboat Springs. She has worked on member registration and was Trip Chairman of the Hilltop Herb Farm Gourmet Dinner last November. She also served as Trip Chairman on her second trip to Steamboat this year.

Her love of people coupled

with a natural talent for detail and organization should prove helpful in the coming year.

Finn Runfalo, native Houstonian, alumnus of St. Thomas and the University of Houston, has been an active SCSC member since 1969. Finn has served as Trip Chairperson, First Texas Ski Council Race Chairperson, Lift Liner and was selected January Markemaker.

Finn is a supervisor in general services at Exxon Production Research. His business related activities include past president's committee Exxon Employee Club; picnic committee; and Exxon Singles Club, past president advisor.

To Finn, the SCSC membership fee is "the best bargain anywhere with a dozen or more ski trips and the wide range of non-ski programs". As Trip Director, Finn is eager to work again for the members of SCSC to make our "great club even greater!"

SUMMER CONDITIONING PROGRAM

Lessons per hour \$16
Open deck time per hr \$8

Packages

1. 3 Lessons 5 hrs. open deck time\$65
2. 5 Lessons 10 hrs. open deck time ..\$120
3. Season Pass (May 15-Sept. 15) ...\$175
(1 hr. per day)
4. 5 hr. open deck time\$30
5. 10 hr. open deck time\$60



SKI HOUSTON

6381 WESTHEIMER
AT INTERNATIONAL SPORTS
HOUSTON, TEXAS 77057
(713) 782-4750

GOING TO LAFAYETTE, LOUISIANA FOR THE HORSE RACES



AUGUST 21 - 22

\$31.00 PER PERSON

LAFAYETTE TRIP

PRICE INCLUDES:

ROUND TRIP TRANSPORTATION VIA PARTY BUS (BRING CARDS OR BACKGAMMON SETS). HOTEL ACCOMMODATIONS AT SHERATON TOWNHOUSE (DOUBLE OCCUPANCY). RESERVATIONS AT CLUB BOXES SATURDAY NIGHT FOR RACES. SUNDAY MORNING "EYE OPENERS" AT MOTEL POOL. REFRESHMENTS (BEER AND MIXES DURING BUS TRIP).

ITINERARY:

SATURDAY, AUGUST 21

LEAVE HOUSTON 10:00 A.M. FROM WINDSOR PLAZA -AIRPORT BUS TERMINAL. ARRIVE APPROXIMATELY 2:00 P.M. CHECK IN MOTEL. BUS WILL LEAVE FOR RACES AT 6:00 P.M. WILL RETURN AFTER RACES, APPROXIMATELY MIDNIGHT.

NOTE: COAT REQUIRED AT RACE TRACK BOXES.

SUNDAY, AUGUST 22

"EYE OPENERS" AT MOTEL POOL (BLOODY MARYS AND SCREWDRIVERS) 10:00 A.M. CHECK OUT 12:00 NOON. LUNCH AT DON'S SEAFOOD RESTAURANT (NOT INCLUDED IN THE PRICE OF TRIP). DEPART ABOUT 2:00 FOR HOUSTON. ARRIVE APPROXIMATELY 6:00 P.M. NOTE: BRING YOUR SWIM SUIT.

RESERVATIONS:

SPACE IS LIMITED TO 38 PARTICIPANTS. FULL PAYMENT DUE AT TIME OF RESERVATION. MAKE CHECK PAYABLE TO SPACE CITY SKI CLUB. SEND YOUR CHECK NOW TO:

CYNTHIA LACKEY

5330 BEVERLYHILL, NO. 34

HOUSTON, TEXAS 77056

PHONE 626-3519

(\$5.00 CANCELLATION CHARGE)

Name: _____

Address _____ Apt. No. _____ Zip _____

Roommate if known _____

Phone Number: (Home) _____ (Office) _____

Preference — Bloody Mary's _____ or Screwdrivers _____

Guest _____ Amt. Enclosed \$ _____

markemakers

By Beth Nolen



JEWEL and MILFORD FRNKA

Everyone's heard the old saying, "starting off with a bang," but Milford Frnka took it literally. Three years ago when he and his wife, Jewel joined Space City Ski Club for Texas Ski Week at Vail, they invisioned a thrilling and satisfying week of snowy slopes and challenging runs. But in his enthusiasm, Milford took a fall ten minutes

after donning his skis and spent the remainder of the week nursing a broken leg. Determined to make the most of his trip in spite of his injury, he volunteered as unofficial photographer for the races, and situated himself at the bottom of the run, braced by a ski pole on one side and Jewel on the other. (Hope those pictures turned out better than the roll you took in Banff, Milford!)

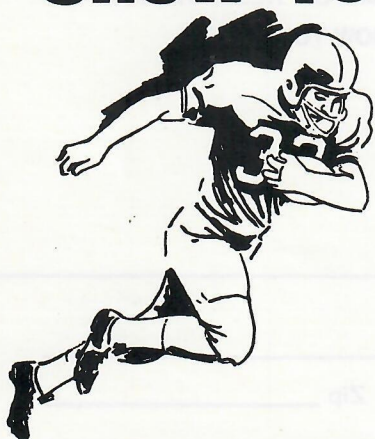
Not to be outdone, Jewel Frnka got her "big break" in Steamboat the following year. She's still not quite sure how she did it, but a broken wrist resulted from a spill she took skiing from the lift ticket window to the lift. Fortunately the Ski Patrol Lodge was conveniently located at the scene of the accident. Despite these frustrating setbacks, the Frnkas enjoy two or three ski trips a year with SCSC. And, believe it or not, their favorite areas to ski are Vail and Steamboat Springs. Perhaps it's their unique ability to identify with certain locations in these areas.

A dentist by trade, Milford enjoys the traditional doctor's Wednesday afternoon golf game, as well as fishing and hunting when he can get

away. His most memorable adventure was hunting Big Horn Sheep in British Columbia several years ago. Not so impressive, but nevertheless enjoyable, are weekend treks to South Texas and other nearby areas for hunting turkey, ducks and geese, and mule deer during respective seasons. Although his trophies are mounted, Jewel restricts their display to Milford's office saying "I can't stand those beady little eyes staring at me." Apparently it doesn't bother her while they're still alive, since she often accompanies Milford on his hunting trips. Jewel stated her most consuming pastime as being an avid spectator, with needlepoint in hand. She also enjoys ice skating; last year she improved her proficiency by participating in figure skating classes at the Ice Haus at Town & Country. Look out, Dorthy Hamill!

As well as being socially active in our own Space City Ski Club, and volunteering their assistance on the Membership Table last year, the Frnkas deserve recognition for Jewel's membership in the Houston District Dental Auxiliary and Milford's achievements as a post president of the Houston District Dental Society and outgoing Vice-President of the Texas Dental Association.

Show Your Support for the Oilers!



**OILERS
vs
COWBOYS**

LABOR DAY WEEKEND

FLY TO DALLAS, SATURDAY, SEPT. 4th - RETURN SUNDAY, SEPT. 5th.

TRIP INCLUDES:

- * **ROUND TRIP AIR TRANSPORTATION**
- * **BUS TRANSPORTATION IN DALLAS**
- * **TICKET TO OILER-COWBOY GAME**
- * **LODGING AT NORTH PARK INN IN DALLAS (Dble. Occupancy)**
- * **SCREWDRIER PARTY SUNDAY MORNING**

COST:

APPROXIMATELY \$70. See August SITZMARKE for confirmed price.

Please mail application WITHOUT money to:

**ROBERT REICHEK
5321 Pocahontas
Bellaire, Texas 77401
Hm.: 661-9304 / Off.: 626-7777**

NAME _____

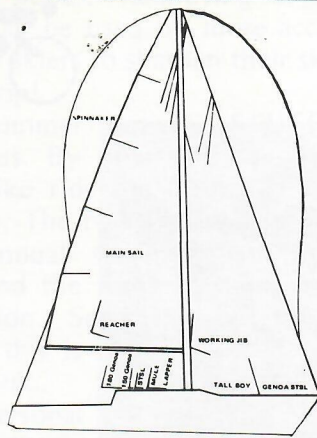
ADDRESS _____

CITY _____ STATE _____ ZIP _____

PHONE: (Home) _____ (Office) _____

MALE () FEMALE ()

space city sailing



By Jim McIntyre

The Space City sailor does not have to wait until long after the last snows of winter have melted to enjoy his second love . . . SAILING! Sailing is generally considered a summer sport, but in our warm climate, sailing prospers all year round.

The southeast coast of Texas provides many great places to sail, whether it be lake, bay, or offshore sailing in the Gulf of Mexico. The types of sailing are as varied as the places to sail, and that is what this article is all about. In the interest of simplicity, sailboats will be broken down into these three general classes: *centerboat boats*, *swing-keel* or *trailerable boats*, and *fixed-keel boats*.

Centerboard boats are usually sixteen feet or under in length. Some exceptions go to twenty feet, particularly in the catamarans. These boats for the most part, have only one sail, and a centerboard that drops through the hull. Most people learn to sail on centerboard boats, as they are generally available on a rental basis. If you have never sailed and want to start, this is the boat. No experience is necessary, just a bathing suit (in case you turn over) and a few instructions from the person at the rental dock. After about thirty minutes of playing with the sail, you can usually go where you want.

Centerboard sailboats can be purchased new for as little as \$400. Most major resorts at Lakes Conroe, Houston, Travis, L.B.J., Sommersville and Livingston, will have center-

boards available for rent. The prices on weekends or holidays is approximately ten dollars an hour. These boats are available on Clear Lake off N.A.S.A. Road 1 at the Harris County Park and also at Offits Bayou off 61st street in Galveston.

The most popular type of sailing is in the swing-keel boats which generally range from sixteen to twenty-one feet in length. These boats are not so easy to rent, but by asking around at marinas they can be found. Most sailors of this type own their own boat and keep it on a trailer in a storage shed or at their home or apartment. These boats, new, range in price from \$1200 to \$3000. This type of boat, commonly called a "day sailor", is very practical and a lot of fun. The boat is large enough to sail in some good winds and carry as many as four people, along with some beer for hot days, yet is small enough to be trailered from lake to lake and even to the bay. The mast can be stepped (put up, you landlubbers) without too much trouble and the rigging attached in about 30 minutes.

For those who take their sailing seriously, there are many sailing clubs where you can compete for trophies. The competition in these classes of boats is quite keen. If you are new and intend to start racing, be prepared to get whipped the first times out.

The largest class of boats is the fixed-keel boats and is generally called cruising boats. This type of boat ranges from twenty-two to seventy feet in length and ranges in price from \$5000 to \$150,000. Most of these boats have live-aboard accommodations which include

bunks, stoves, heads, etc. If you know how to sail, you can even rent one of these boats at the Watergate Marina on Clear Lake. The easiest way to get to sail on a fixed-keel boat is to ask a friend to take you along. Most of the boats in this class are located along the coast at the various marinas. The most concentrated collection of these boats is on Clear Lake, where it is estimated that there are slips for 6000 boats (including powerboats).

If you want to OOOH and AAAH over these “biggies”, go to the Kemah area on a Sunday afternoon and watch them come in and out of the Clear Lake channel.

Sailing is the sport most akin to skiing, for in both sports only one variable (steepness of the slope and strength of the wind) and your ability, determine how fast and how far you go. You don't have to rely on any mechanical device or anyone else to help you along, and this is as close to being free to do our own thing as you can get.

GET LOCKED IN TO
SUMMER FUN
AT

RUTH ROY'S "LOCKED IN" SPORTS

9703 KATY FREEWAY

9:00 a.m. to 6:00 p.m.

PHONE 461-3124

Discover a New World in SCUBA

Classes start every 6 weeks. Dive Shop complete with air, rentals & service.

THE TENNIS PRO SHOP

*Latest fashions for men and women.
Professional racquet stringing. Full line
of the newest equipment.*

*Our WATER SKI DEMO PROGRAM
lets you "TRY BEFORE YOU BUY"*

bicycle ride



By Barbara O'Neal

The weather cooperated with a sunny day on June 20th, and 34 brave SCSC cyclists took off on a 22-mile ride in the beautiful countryside near Stephen F. Austin Park.

Sy Liebergot and Roy Nice established an early lead only to lose out at the last when Sy and his bike took a roll in the ditch. Our hats are off to Allen Simpson and George Hirasake for finishing first.

The entire ride was made more enjoyable because Finn Runfalo loaded his truck with beer, soft drinks, and cold water to provide refreshments at each of the check-points on the route. It was always a welcome sight to see the red truck parked ahead. Tom Mercer helped Finn out by reading the map. Would you believe they got lost on the first stop and went to Brookshire?

Ana Marie Townsend, Linda McDuffie, Nancy Ainsworth,

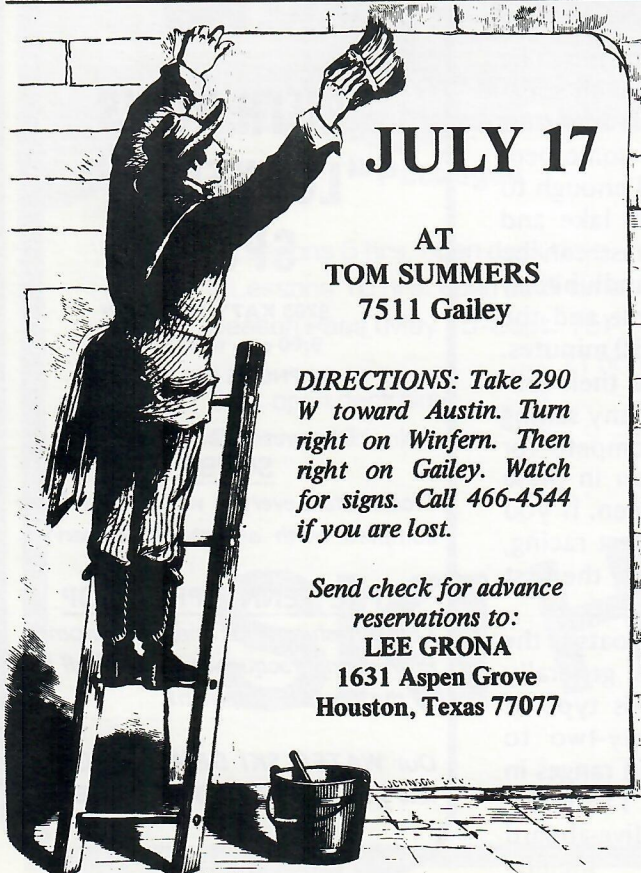
Debora Gohr, and Jennifer McCarty can all attest to the benefits of riding part of the way in the truck. Dale Englefield and Greg Thompson were seen using the truck for a rope tow on one occasion.

For long distance riding, we'll have to recognize Willie and Louise Buhl. They rode the entire trip with only one stop for refreshments. Dave and Carol Hull moved along at a fast clip the entire ride. Cindy Page found the pedaling much easier the last half of the ride; she had pedaled the first part on Finn's bicycle with the front brake rubbing.

Judy Kuntscher came home with battle scars after a collision with Max Langley on the last mile of the ride. None of us could convince Nancy Ainsworth that the last half of the ride was all downhill.

After the ride we all went into Stephen F. Austin State Park for fried chicken and watermelon. This was probably the most dangerous part of the activity with Tom Mercer, Wayne Cook and Allan Simpson enjoying a wild frisbee game.

A great group of people braved the hot sun to enjoy a day of cycling in the country. Thanks to everyone for making the trip a success!



ANNUAL SUMMER BASH

\$5.00 per member (in advance) \$8.00 for guests or at the door

*GAMES *RACES *DOOR PRIZES
*WATERMELON SEED SPITTING *SWIMMING
*TENNIS *VOLLEYBALL TOURNAMENT

NOTES OF INTEREST: Bring your lawn chair or blanket. For a picnic, bring a sack lunch and come early. Parking space limited. Bring mosquito spray.

***BRING YOUR SKI BOOTS FOR THE SKI SLALOM**

***BEER TAPPING AT 1:00 P.M.**

***SHRIMP AND CORN ON THE COB SUPPER AT 6:00 P.M.**

Name: _____

Guest's Name: _____

Phone: _____

AMT. ENCLOSED \$ _____

TENNIS TOURNAMENT Yes () No ()

VOLLEYBALL TOURNAMENT Yes () No ()

Tennis and Volleyball
Tournament
Co-ordinator
DON LACKEY
Ph. 626-3519

Eatzmarke

By Roy Nice

Culinary night life in Space City is too often measured by such diverse facts as: How many swans are in the goldfish pond, the maximum number of indoor/outdoor waterfalls per table, and whether you want your (100% pure?) beef hamburger with or without pickles, lettuce, onions and tomatoes, 'Special orders don't upset us.'

In the event you have a spirit of adventure that leads you away from Plastic Land and Franchise City, here are a few excellent, usually off-the beaten path restaurants.

GOODSON'S CAFE - Chicken fried steak (real steak - no kidding) hand cut french fries and white cream gravy is served in abundance. Located in a wide spot in the road called Huffsmith. Take I-45 to Kuykendahl Rd. and drive and drive and drive (driving time 25 minutes). If you need further directions, please call 351-1749. Mrs. Goodson has presided over this locally famous eatery for 20 years; the result is a spotless kitchen, service magnificent (orders are shouted into the kitchen by Kathy) and the platters are huge. Hours until 9 p.m. daily. No reservations, no bar. Fresh fried shrimp, oysters and hamburgers. Weekends be prepared to wait 10-20 minutes for a seat; it's worth it.

HYDENS STEAK BARN - Drive 4 miles north to Spring, 25140 I-45. Always popular. Weekend waiting time 20-45 minutes, but this is a welcome diversion. Sam Ditchero, resident Cajun, serves platters of oysters, boiled shrimp and or boiled crawfish (in season) always with the best Hurricanes west of the Bayou Teche. The seafood, particularly the stuffed flounder, shrimp and lobster consistently outshine the steaks. Prices are very reasonable; service is quick and courteous.

As long as you are out that way, go Boogie at the disco at **THE GLASS MENAGERIE** in Wharf Mall at the Woodlands Development. Good drinks, good music without

that Sardine Placement atmosphere. A word about the restaurant; the price greatly outweighs the quality. Somebody has to pay for the chandeliers!

RENDEZVOUS RESTAURANT - Bring your wallet and come with a spirit of anticipation to Arcola. Take Telephone Road to Alvin, turn left on Hwy. 6, go approximately 3½ miles out Hwy. 6 or stop and ask anyone in the many liquor stores (Alvin is dry) for directions. The French and Continental Cuisine in this out of the way, diamond-in-the-rough, makes the evening fit for a gastronome. Lobster Bisque and French Onion Soup are a few of the untold highlights produced in the kitchen presided over by the manager of many years, Mrs. Salvato. A Velvet Hammer is recommended from the bar to preceed the bill. Remember, you are paying for the highest quality ingredients and superior preparation and not for food for the ducks or the forest that sometimes separate

one table from another.

When it is time to dance off some of the butter sauce, baked potatoes, or something caloric, try the **RUBAIYAT RESTAURANT AND BAR**, located at 7011 Southwest Frwy. Don't let the word restaurant lead you to believe the food is a drawing factor. Everything - seafood, steaks, and chicken tastes like cardboard straight out of the microwave oven. The bar and band, Johnny Williams Five, playing everything from the Hustle and the Tighten-Up to the Cotton-Eyed Joe, far outweighs any problems in the kitchen. Crowded on the weekends. During the week, there is less pushing and shoving. Not for those looking for a quiet place to be alone.

.....
The EATZMARKE is a selective guide to dining and entertainment, reflecting the opinions of the contributor. The Sitzmarke accepts no advertising or other consideration in exchange for including any business enterprise in this column.



Some stores have all the fun!

Coming Attraction!

This Ski Season
Our Post Oak Store
Will Carry A Full Line
Of Ski Apparel and
Ski Equipment.

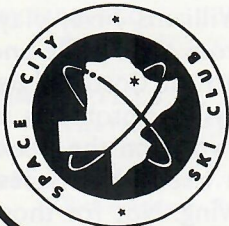
Watch Our Ads For More Information!

OSHMAN'S™

DOWNTOWN • SHARPSTOWN • TOWN AND COUNTRY
PALMS CENTER • MEMORIAL CITY • ALMEDA SQUARE
MEYERLAND • NORTHLINE • POST OAK • PASADENA

Opening Soon: Our Beautiful, New, Greenspoint Store

SPACE CITY SKI CLUB
P. O. Box 22567
Houston, Texas 77027



sitzmarke

july
DATED MATTER



FIRST CLASS MAIL
U.S. POSTAGE
PAID
PERMIT NO. 9036

**DO SAILORS REALLY HAVE MORE FUN????
THEY DID LAST YEAR!!!!**

SATURDAY, JULY 31

RED FISH ISLAND

\$7.00 / Person — \$5.00 / Captain

Meeting Point is Red Fish Island

FOOD AND BEER — 1330 (1:30 P.M.)

**SCSC SAILORS DAY — LIMITED SPACE FOR PASSENGERS — ALL BOAT OWNERS WELCOME
PASSENGERS WILL BE NOTIFIED BY CAPTAINS BY JULY 21**

***SWIM SUIT CONTEST**

***BEST DECORATED "T" SHIRT CONTEST**

CAPTAIN

CAPTAIN _____ Yrs. of Service _____ Boat (Sail _____ or Motor _____)
Address _____ Apt. No. _____ Zip _____ Size of Boat _____
No. of passengers willing to take aboard other than crew _____ no. of passengers already scheduled as crew _____
Names of Crew _____ Phone No. _____
Amt. Enclosed \$ _____ (includes \$5.00 for Captain and \$7.00 for all others) Will bring Ski Equip.: Yes No

**SCSC MEMBERS: THE CO-ORDINATOR WAS TOLD THAT ALL SAILORS KNOW WHERE RED FISH ISLAND IS LOCATED
(I HOPE SO). IF YOU DO NOT, THEN I AM TOLD YOU SHOULD FILL OUT THE INFORMATION BELOW:**

PASSENGER

I WOULD BE INTERESTED IN BEING A PASSENGER ON: MOTOR BOAT _____ SAIL BOAT _____

I UNDERSTAND THAT I WILL BE NOTIFIED BY THE CAPTAIN IF I CAN GO AND THAT I WILL LEAVE FROM
HIS USUAL BOAT SLIP OR MOORING AT HIS SPECIFIED TIME AND THAT SPACE CITY SKI CLUB OR THE
CAPTAIN IS NOT LIABLE FOR ANY ACCIDENTS WHILE ON THE BOAT, ISLAND OR TRAVELING.

Name _____ Office Phone _____
Address _____ Home Phone _____
Apt. No. _____ Zip _____ AMT. ENCLOSED \$ _____ (7.00 / Person)

Make checks payable to SCSC and mail to:

**DALE ENGLEFIELD
947 W 41st Street
Houston, Texas 77018**

(REFUNDS WILL BE MADE IF BOAT IS NOT AVAILABLE)

OFFICE USE ONLY

Card No.

--	--	--	--

Card No.

--	--	--	--

MEMBERSHIP FORM



MAKE CHECK PAYABLE TO

SPACE CITY SKI CLUB
P. O. Box 22567
Houston, Texas 77027

PLEASE PRINT

APPLICATION MUST BE COMPLETE TO BE VALID

NAME _____
LAST FIRST MIDDLE INITIAL

OVER 21 YRS

YES	NO

SPOUSE'S NAME _____

SPOUSE

YES	NO

ADDRESS: (Street) _____ APT. NO. _____

CITY _____ STATE _____ ZIP _____

TELEPHONE NO. (Home) _____ (Office) _____

OCCUPATION — ENTER THE NUMBER CLOSEST TO YOURS

- 00 Architecture
01 Engineering
02 Legal
03 Medicine and Health
04 Education

- 05 Writing and Publishing
06 Art and Photography
07 Entertainment and Recreation
08 Accounting and Auditing
09 Interior Design

SPOUSE

- 10 Secretarial
11 Sales - What _____
12 Transportation
13 Draftsman
14 Other (Specify) _____

NUMBER OF SKI TRIPS TAKEN WITH CLUB:

1974-1975

--	--

1975-1976

--	--

SPOUSE:

1974-1975

--	--

1975-1976

--	--

CHECK (✓) THE COMMITTEE(S) THAT YOU WOULD LIKE TO WORK ON.

SPOUSE (X) BOXES)

TRIPS

- A ☐ Trip Chairman
B ☐ Assistant Trip Chairman

PROGRAMS — SPECIAL EVENTS

- C ☐ Style Show/Skits
D ☐ Sport Activities
E ☐ Non-Ski Trips
F ☐ Safety/Education
G ☐ Social Activities
H ☐ Photographs/Slides/Movies

MONTHLY MEETINGS

- I ☐ Membership Check-in and
Guest Registration
J ☐ Pins, Patches, Decals
K ☐ Drink Ticket Table
L ☐ Lift Liners
M ☐ Audit
N ☐ Audio System/Lights

PUBLIC RELATIONS

- O ☐ Sitzmarke/ Photographer
P ☐ Sitzmarke/Reporter
Q ☐ Club Directory/Scrap Book
R ☐ Ads for Publications
S ☐ Will Help Where Needed
T ☐ OTHER

<input type="checkbox"/>	_____
<input type="checkbox"/>	_____
<input type="checkbox"/>	_____

MEMBERSHIP DUES FOR 1976-1977

RENEWAL DATE MAY 1st — AUGUST 1st

SPONSORS- TWO REQUIRED

If new or after August 1st

1. _____

2. _____

NEW APPLICANT

DUES RECEIVED AFTER AUGUST 1

<input type="checkbox"/>

\$14.00 Single

<input type="checkbox"/>

\$19.00 Couple

Dues subject to increase after August 1

RENEWAL DUES BEFORE AUGUST 1

SAVE \$2.00

<input type="checkbox"/>

\$12.00 Single

<input type="checkbox"/>

\$17.00 Couple

(THIS APPLICATION SUPERCEDES ALL APPLICATION FORMS PRIOR TO MAY 1, 1976)