

# sitzmarke

november 1976





# space city ski club

## 1976 - 1977 OFFICERS

SY LIEBERGOT . . . . . 869-0291  
President

JIM BENEFIELD . . . . . 461-6855  
Vice President - Trips

LEE GRONA . . . . . 493-5788  
Vice President - Programs

DUFF TRIMBLE . . . . . 529-2608  
Vice President - Membership

LINDA McDUFFIE . . . . . 461-1196  
Vice President - Publications

JANE McCORMICK . . . . . 664-9567  
Secretary

BOB MARWIN . . . . . 772-4039  
Treasurer

## EXECUTIVE BOARD MEMBERS

Current Officers Listed Above

Layna Taylor	Jim McIntyre
Bob Allgeier	Kay Nevels
Harry Gaston	Bob Olsen
Jim Grassman	Janet Pickell
Janis Hughen	Jim Plummer

## TRIP DIRECTORS

Nancy Ainsworth Finn Runfalo

## SITZMARKE STAFF

PUBLISHER  
Space City Ski Club

EDITOR  
Linda McDuffie

COVER PHOTOGRAPH  
Keith Gunnar, Recreational Equipment, Inc.

ADVERTISING	PHOTOGRAPHER
Cynthia Lackey	Pat McLaughlan

CONTRIBUTORS	
Ken Dominy	Joyce Serant
Keith Eastin	Duff Trimble
Mary K. Nicholson	

MONTHLY FEATURES	MARKEMAKER
Beth Nolen	
Sy Liebergot	HEAD OF THE LIFTLINE

The Sitzmarke is published monthly by the  
SPACE CITY SKI CLUB

VOLUME 9, Number 7 NOVEMBER 1976

## SKI MEETING

MONDAY — NOVEMBER 8, 1976 — 7:30 P.M.

Sonny Look's SirLoin Restaurant So. Loop W. at So. Main

SHOW YOUR 1976-1977 MEMBERSHIP CARD AT THE DOOR

CARPOOL WITH A FRIEND — PARKING SPACE IS LIMITED

## CALENDAR

NOVEMBER 8 . . . . . NOVEMBER MEETING  
STYLE SHOW — J. RICH SPORTS, LTD.

NOVEMBER 17 . . . . . EXECUTIVE COMMITTEE MEETING

NOVEMBER 24-28 . . . . . SALT LAKE CITY SKI TRIP

DECEMBER 13 . . . . . DECEMBER MEETING  
NASTAR PROGRAM

DECEMBER 15 . . . . . EXECUTIVE COMMITTEE MEETING

DECEMBER 16 . . . . . ICE SKATING PARTY

## MEMBERSHIP CARDS

As you may have noticed, membership cards are being mailed inside the Sitzmarke. You should receive your card in the Sitzmarke issue the month after you submit your application. If you have not received your card, please contact:  
Duff Trimble - Ph. 529-1207

## MEMBERSHIP November 1, 1976

Singles . . . . .	954
Married . . . . .	446
TOTAL . . . . .	1400

## SITZMARKE DEADLINE

November 17, 1976

December 22, 1976

January 19, 1977

## NOTE:

## SITZMARKE CONTRIBUTORS

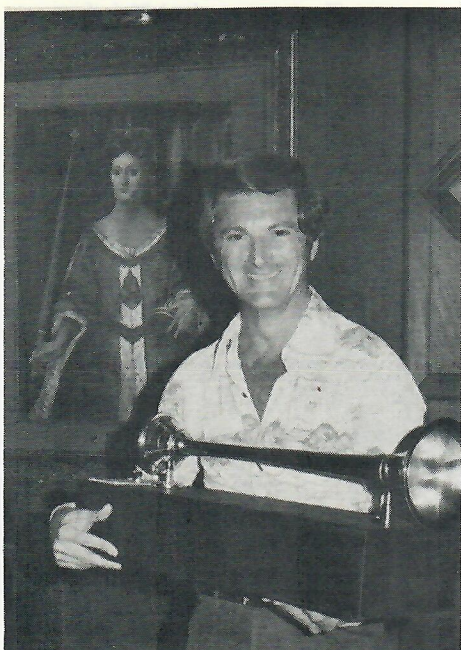
1. Articles must be typewritten, double spaced.
2. Pictures should accompany written article; however, if not possible, may be turned in approximately 7 days after copy.
3. Pictures should be in black and white.
4. Pictures must be identified on the back. If the persons in the picture are not identified, the picture, as good as it might be, will not be used.
5. Mail to:

Linda McDuffie, V.P. Publications  
156 Litchfield Lane, Houston 77024

## — CHANGE OF ADDRESS —

Send change of address or telephone to: Duff Trimble, Vice Pres.-Membership, 11831 Balmoral, Houston, Texas 77024.





By Sy Liebergot

Whew! It looks like things may be getting back to normal; "only" 630 people attended the October regular meeting, but it seems you're not drinking enough, yet. We will have to increase the drink price to \$1.25 as I told you we might; beginning with the November meeting. Club policy has been to hold the monthly regular meetings at no cost to the treasury and to this date, we have not done so in spite of the fact that the meeting room cost has increased significantly. However, you'll all have to agree that the monthly meeting is still the best social evening buy in town.

Trips are filling nicely; six trips are full and one more is within six people of filling. It appears the best bets for more skiing are on the February, March and April trips. Get your vacation plans in order and sign up, folks!

It was a pleasant surprise to see out-of-town members Leslie Holmes, Boston, Mass. and Jerry McIntyre, Salem, Oregon at the October meeting. Jerry was visiting his brother Jim, past SCSC prez and had never been to a meeting. Needless to say, Jerry will be on the Mt. Hood trip in April.

The membership limitation was discussed at a Board of Director's meeting in September where it

# head of the lift line

was decided to allow the present 1400 limit to stand. Please note that the membership total is now 1400. My personal feelings are that SCSC is large enough with respect to meeting room size and parking requirements, providing adequate services to the membership with regard to administration, number of trips and activities. Bigger is not better. Please read Duff Trimble's article in this issue dealing with aspects of membership limitation.

Bad news, folks. By the time this issue reaches you, Continental Airlines will have been on strike since October 22. Jim Benefield, your hard-working V.P.-Trips, attentive to the contract deadline early in the year, was able to schedule all trips that utilized Continental Airlines as late in the season as possible with the exception of the Jackson Hole trip. We'll ensure this

trip is covered with alternate arrangements.

Good news, folks. Following Braniff Airlines lead, Continental Airlines has also applied to the CAB for group airfares. Two down, one to go.

Many thanks to the SCSCers that manned (personed?) the Texas Ski Council booth at the Texas National Sports and Camping Show (whew!) at the Astrodome in September. The "volunteers" were: Judy Allen, Linda McDuffie, Max Langley, Bob Marwin, Cynthia and Don Lackey, Ed and Layna Taylor, Finn Runfalo, Diane and Pat McLaughlin, Duff Trimble and yours truly.

Don't forget that this month's meeting will feature our annual ski clothing style show, presented this year by J. Rich Sports, Ltd. No streaking this year, folks!

## team 12 RAMP FREESTYLE SHOW



## HOUSTON SKI SHOW '76 THANKSGIVING WEEKEND, NOV. 26-28

Albert Thomas Convention Center in Downtown Houston

Presented by Prichard-Cauley Productions, Inc. For information, call 965-0232

Many Free Prizes and Ski Vacations to be Given Away



# SCSC MEMBERSHIP



By Duff Trimble  
Vice-President - Membership

Since our Bylaws limit our membership to 1400 persons, and we have reached that limitation mark, it seems timely that we explain what happens next. This will hopefully keep our Club healthy and its members active.

After the 1400th person was enrolled, we began a numbered wait-

ing list, with each new applicant assigned a consecutively higher number. When renewal deadline next year arrives, (April 30, 1977) we will immediately move our waiting list to active membership before accepting any more new members. During that ski season and the following one, we will record the names of members who participate in our skiing trips. Those who do not ski in those two seasons will be dropped, if a waiting list exists, and replaced with persons on that list.

You're probably wondering about ski trips. Yes, you must be a member to participate, which means: *if you've paid a deposit and have not yet joined the Club, upon our reaching full membership, you will be dropped from the trip and replaced with a member from the waiting list.* NOTE: You who are reading this are probably members,

but those who need this information may not see it. Please tell them!

We hope in this way to be able with no more than the present administrative force, to continue to give our members good service and at the same time be certain that most of us are actually interested in skiing! Your Board of Directors and Executive Committees past and present, have given this subject considerable attention and hope our decision meets with your approval.

## SCSC NEWS

*Engaged:* Janis Huguen to Matt Matherne. Congratulations! Question of the marriage season: Who (which one?) is Mary Campbell marrying.

*Educational Fund Raiser:* Connie Mayeux, Linda McDuffie, and Sallye Stapleton invite all SCSCers to the Annual American Society of Interior Designer's Bazaar at River Oaks Garden Club, November 13-14.

# LET'S GO SKIING

Alpine Designs

Bausch & Lomb

ARIS

Bogner

BURT

clothes rental  
colorado ski trips

duofold

DEMETRE

Edelweiss

GERRY

grandoe

HANSON

hart

HEAD

HEXCEL

hotgear

hot waxing

Jersild

K2

KASTLE

KNEISSL

KOMBI

Lido

LOOK

Meister

NORDICA

Raidle

repairs

Robbe

ROSSIGNOL

SALOMON

SARNER

SCOTT

ski rental

SKYR

slalom

Smiley

SMITH GOGGLE

Sportcaster

TheLine/

uvex

Wigwam.

YODELERS

## J. RICH SPORTS LTD.

rice blvd. 529-8767 / galleria 626-3650 / katy & bingle 465-4872

• houston •

austin • tulsa • vail •



# We'll give you a snow job you're gonna like.



## Ski Continental's Colorado.

Tired of the same old scene? Relax and think snow. Colorado snow. Continental can get you there on a wide-bodied DC-10 or spacious wide-look 727. Then ski your way through Colorado with one of our great ski packages. Here's a sample:

**Breckenridge \$144-5 days/4 nights** Accommodations at Der Steiremark, a skierized Avis rental car, 3 days of lift tickets, plus meeting service at the Denver airport.

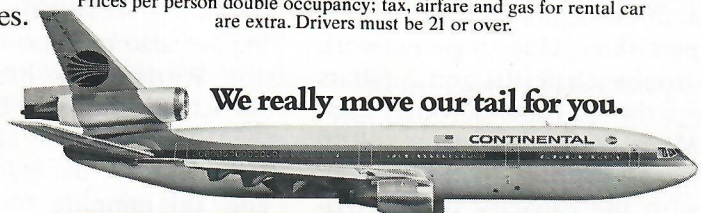
**Vail \$264-8 days/7 nights** Accommodations at Vail's Holiday Inn, a skierized Avis rental car, 3 days of lift tickets, plus meeting service at the Denver airport.

Don't forget to ask about how you can save even more with our special discount airfares.

For more information on Continental's ski packages, call your Travel Agent or Continental Airlines. Or send in the coupon.

CONTINENTAL AIRLINES P.O. Box 9000, Van Nuys, Calif. 91406	S-10
Please send me more information on Continental's Colorado ski packages.	
Name _____	
Address _____	
City _____	State _____ Zip _____
Phone _____	
My Travel Agent is _____	

Prices per person double occupancy; tax, airfare and gas for rental car are extra. Drivers must be 21 or over.



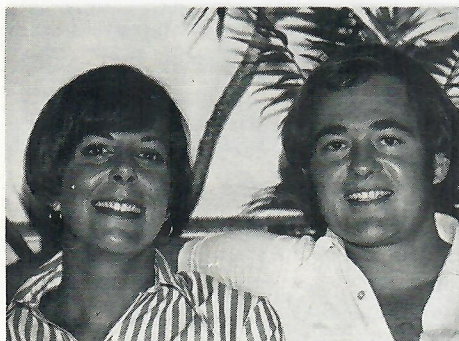
**We really move our tail for you.**

### CONTINENTAL AIRLINES

The Proud Bird with the Golden Tail.



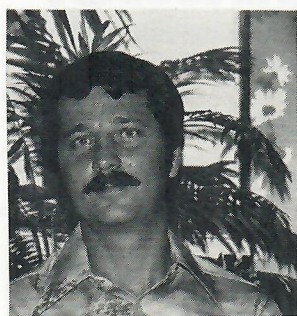
## VAIL



*Mary K. Nicholson and Ron Honefenger*

What could be better than one week of Vail, one of the country's largest ski resorts, full of European charm? It's a real trip! This is the first week-long trip to Vail that Space City has ever offered and it couldn't be at a more perfect time—February! No worry about snow conditions. No Christmas or Easter crowds. And, no one has to split up a week of any of their precious vacation time.

## WINTER PARK



*Ken Dominy*

Winter Park Ski Area is patterned for the challenge and satisfaction of the beginner, intermediate or expert skier. One single network of 13 double chair lifts and 2 T-Bars connect the 55 runs of Winter Park and Mary Jane mountains. With four mountain faces and a lift system with the capacity of approximately 15,000 skiers per hour, you'll ski instead of spending the

Seventy-two of us will leave Saturday morning, February 5, just before 9:00 A.M. and should be in Vail by 1:00 that afternoon. That gives the really enthusiastic skiers a chance to ski the very first afternoon we are there! Then everyone will have 6½ more days of skiing. The length of the trip will allow beginners who take lessons at Vail's outstanding ski school plenty of time to practice and perfect their skills.

While in Vail, we'll be staying at the Mountain Haus, a Space City favorite. We'll have two and three bedroom apartments with a fireplace in the living room and a kitchen. The Mountain Haus also has a heated pool and a sauna for your tired, cold bodies. The Mountain Haus is right in the middle of all Vail's action, of which there is plenty! There are over 62 bars and restaurants in this quaint village. Also, we will be having a few of our own cocktail parties before you go out on the town.

In addition to all Vail has to offer, Space City skiers are entitled to a discount on lift tickets which are normally \$12.00 a day! Also,

majority of your day in the lift lines. Mary Jane with her deep powder, moguls and advanced terrain will challenge the expert and intermediate skiers. Beginners have wide gentle slopes on which to learn, including long runs from the top of the Winter Park mountain. Intermediates have a wide variety of runs and may glide back and forth on the runs connecting Mary Jane and Winter Park. This year the Winter Park area has added a new snow-making machine covering 71 strategic acres at the bottom of the mountain to insure good snow conditions daily.

If the spirit grabs you, tubing, sledding, snowmobiling, cross-country skiing, ice skating and snowshoeing are also popular in Winter Park.

Winter Park has an excellent ski school featuring both GLM and ATM methods in addition to instructions in ballet, aerials, racing and ski jumping for the brave at heart.

Winter Park is ready for us

we have arranged a super discount on ski rental provided by the friendly folks at J. Rich. Renting your skis and boots, etc. is usually a big hassle, but in Vail, J. Rich will have everything waiting for us at the hotel when we arrive. His store in Vail will also provide free transportation if you need to exchange equipment. Super deal!

If the airlines get their group rates approved, of which there is a good possibility, the price of our trip could be reduced considerably. As it is now, there is not another trip offered to Vail at the same time that can compare with the SCSC trip.

Vail has 14 square miles of slopes ranging from beginner to expert, and all the fun night life; this promises to be one of the best trips Space City has ever offered! Sign up at the next meeting or give Ron or me a call.

**Mary K. Nicholson, Trip Chairperson**  
49 Hazard, Houston 77098  
Hm.: 526-3205 Off.: 626-3930

**Ron Honefenger**  
Assistant Trip Chairperson  
Hm.: 468-6413 Off.: 676-8264

when the sun goes down with a variety of fine restaurants, pubs, cocktail lounges, dancing and entertainment in addition to our SCSC parties.

Leave with us for 6½ days of skiing on Texas International's good morning flight March 5. After a short 67 mile bus ride, we'll arrive at the luxury Hideaway Village Condominiums around noon. Shuttle busses run to both ski areas which are located approximately one mile away. After a fun-filled week, we'll begin our return trip Saturday afternoon and arrive in Houston at 5:15 P.M., March 12.

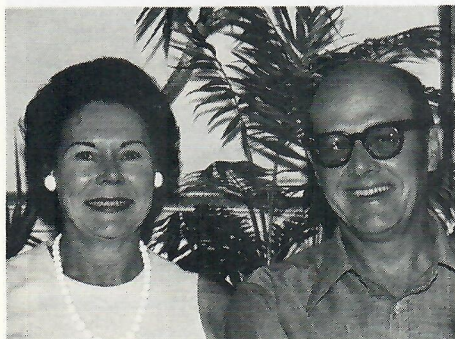
Winter Park has some of the best skiing you'll ever know! Be one of the lucky 44 SCSC members who will ski this big friendly mountain.

**Ken Dominy, Trip Chairperson**  
Hm.: 443-3810 Off.: 443-0700

**Bev Underwood**  
Assistant Trip Chairperson  
Hm.: 780-7979 Off.: 461-6855



## TELLURIDE



*Joyce Serant and Frank Rosenberg*

### TELLURIDE — WASHINGTON'S BIRTHDAY

**TELL-U-WHAT. TELLURIDE ...TURREIFIC!** There is only one ski experience like a Telluride experience. From the first sight to the last schuss, Telluride is unique, a combination of incredible scenery, one-of-a-kind town, magic mountain of "white gold", and the friendliest people in skiing. Ski with fully certified pros in a completely new instruction/adventure program

stressing video-tape replay and personal attention in small groups.

Unspoiled and uncrowded, a skier's paradise tucked away in southern Colorado, 67 miles from Montrose. Telluride boasts more than 3000 vertical feet of skiing: 6 double chairs serve over 40 miles of groomed trails; 20% beginner, 46% intermediate and 34% advanced. Telluride's lift capacity of 5600 skiers per hour ensures more time on the slopes. The Telluride skier falls out of bed onto the Coonskin Lift in the morning and is whisked from the 8,700 foot base to the 12,000 foot summit through the Uncompahgre National Forest surrounded by the rugged and majestic San Juan mountains.

The authentic Victorian architecture of Telluride's main street dates from the silver boom of the 1880's (Telluride has been named a National Registered Historical Landmark). Within this charming old mining town are over 20 restaurants, bars and discotheques, and a host of delightful shops from basic to boutique.

Tuesday, February 15th, 44 lucky SCSC skiers will board Texas International's 6:00 P.M. dinner flight to Denver where we will

spend the night at Skyways Airport Inn. We depart early Wednesday morning via Frontier Airline to Montrose where our chartered bus will take us to Telluride Lodge, arriving approximately 10:00 a.m., in time for a good day of skiing.

Accommodations are at the luxurious Telluride Lodge, 2 bedroom, 2 bath condominiums with fully equipped kitchens, fireplaces, living and dining areas. Additional facilities include heated pool, restaurant, saunas and hot whirlpool jacuzzi.

Activities include cocktail parties, races, wine/cheese, pool party and more.

We will depart Telluride Monday, February 21st, transportation same as arrival, only in reverse, arriving in Houston approximately 5:00 P.M.

Trip price is \$348.00. Final payment due January 6, 1977. For more information contact:

**Joyce Serant, Chairperson**  
2051 Winrock, Houston 77057  
Hm.: 783-6918 Off.: 526-4247

**Frank Rosenberg**  
Assistant Trip Chairperson  
3119 Rice Blvd., Houston 77005  
Hm.: 667-7067 Off.: 676-5987

## TAHOE



*Shirley Andries and Keith Eastin*

**GREAT SKIING FOR GAMBLERS AND GAMBOLERS!** Ninety-two of you SCSCers will depart Houston Intercontinental Airport on a Texas International Charter

Flight at 4:30 p.m. Friday, February 25. Our destination will be San Francisco for a weekend stopover in the "city by the bay".

Busses from the San Francisco International Airport should arrive at the Holiday Inn-Chinatown by 7:30 P.M. leaving the better part of the evening to enjoy the San Francisco night life. We will be in San Francisco for the entire day and night on Saturday to allow for shopping, sampling of the many gourmet restaurants and more night life on Saturday evening.

The busses will leave Sunday morning for South Lake Tahoe. The scenic bus trip will be made even more enjoyable by the usual SCSC refreshments.

Since nearly all of the evening action in Tahoe is associated with the casinos, we will be staying at the Sahara Tahoe on the Nevada side of Lake Tahoe. These accom-

modations are also only 15 minutes from Heavenly Valley Skiing Resort.

Bus transportation to and from the hotel and slopes will be provided daily. Skiing is planned at Heavenly Valley for the first 4 days and at Squaw Valley on the last Friday and Saturday. Ample parties including some great surprises are planned!

Our trek home will begin on Sunday, March 6 with a bus trip back to San Francisco International Airport for our returning Charter Flight. Our flight will arrive in Houston at 8:00 P.M. to finish a 9-day and 9-night skiing escapade.

**Keith Eastin, Trip Chairperson**  
Hm.: 522-2268 Off.: 529-5711

**Shirley Andries**  
Assistant Chairperson  
Hm.: 774-3505 Off.: 789-9600  
Ext. 2234



VICE PRESIDENT - TRIPS  
JIM BENEFIELD  
9525 Katy Freeway, Suite 101  
Houston, Texas 77024  
Off: 461-6855 Home: 785-5127

TRIP DIRECTOR  
NANCY AINSWORTH  
2400 Westheimer, No. 221W  
Houston, Texas 77098  
Off: 236-3400 Home: 523-8722

TRIP DIRECTOR  
FINN RUNFALO  
P. O. Box 2189  
Houston, Texas 77001  
Off: 965-4267 Home: 785-2904

# SCSC '76-77 SKI TRIPS

## SALT LAKE CITY – THANKSGIVING

Nov. 24–28, 1976 \$234.00

CHARLES E. SHEEDY, Trip Chairman  
Office: 654-4484 Home: 621-5448  
MARILYN SUE SMITH, Assistant Trip Chairman  
Home: 465-3207

■ ■

## JACKSON HOLE

Dec. 11–19, 1976 \$399.00

MARIE BROCATO, Trip Chairman  
Office: 526-4349 Home: 723-3073  
MERLYN HARGER, Assistant Trip Chairman  
Office: 479-4570 Home:

■ ■

## ASPEN – CHRISTMAS

Dec. 26, 1976–Jan. 1, 1977 \$360.00

ANNE BENEFIELD, Trip Chairman  
Office: 795-2686 Home: 785-5127  
JOHN C. "EASY" THAYER, Assistant Trip Chairman  
Office: 238-4586 Home: 297-3606

■ ■

## STEAMBOAT – CHRISTMAS

Dec. 26, 1976–Jan. 1, 1977 \$327.00

JUDY ALLEN, Trip Chairman  
Office: 658-9045 Home: 668-2739  
TOM MERCER, Assistant Trip Chairman  
Office: 238-1965 Home: 297-4922

■ ■

## BRECKENRIDGE/CRESTED BUTTE

### TEXAS SKI WEEK

Jan. 7–16, 1977 \$365.00

JACK SPENCER, Trip Chairman  
Office: 656-0221 Home: 783-7369  
NANCY SCOTT, Assistant Trip Chairman  
Office: 622-2000, ext. 442 Home: 495-6715

■ ■

## CRESTED BUTTE

### TEXAS SKI WEEK

Jan. 10–16, 1977 \$353.00

ED TAYLOR, Trip Chairman  
Office: 658-8650 Home: 721-2986  
CATHY COATS, Assistant Trip Chairman  
Office: 790-4321 Home: 522-0410

■ ■

## ASPEN – TRADITIONAL

### CHARTER TO GRAND JUNCTION

Jan. 22–Jan. 29, 1977 \$343.00

WARREN CROSS, M.D., Trip Chairman  
Office: 666-4224 Home: 665-6933  
SALLYE M. STAPLETON, Assistant Trip Chairman  
Office: 789-9747 Home: 789-9747

## VAIL

Feb. 5–12, 1977 \$380.00

MARY K. NICHOLSON, Trip Chairman  
Office: 626-3930 Home: 522-4134  
RON HONEFINGER, Assistant Trip Chairman  
Office: 676-8210 Home: 468-6413

■ ■

TELLURIDE – WASHINGTON'S BIRTHDAY  
Feb. 15–21, 1977 \$348.00

JOYCE SERANT, Trip Chairman  
Office: 526-4247 Home: 783-6918  
FRANK W. RIESENBERG, Assistant Trip Chairman  
Office: 676-4423 Home: 667-7067

■ ■

## TAHOE

### CHARTER TO SAN FRANCISCO

Feb. 25–Mar. 6, 1977 \$399.00

KEITH EASTIN, Trip Chairman  
Office: 529-5711 Home: 522-2268  
SHIRLEY ANDRIES, Assistant Trip Chairman  
Office: 789-9600, Ext. 2234 Home: 774-3505

■ ■

## WINTER PARK

March 5–12, 1977 \$306.00

KEN DOMINY, Trip Chairman  
Office: 656-2063 / 443-0700 Home: 443-3810  
BEVERLY UNDERWOOD, Assistant Trip Chairman  
Office: 461-6855 Home: 780-7979

■ ■

## COPPER MOUNTAIN

March 15–20, 1977 \$279.00

WILL GREEN, Trip Chairman  
Office: 627-7180 Home: 444-2754  
MAUREEN WEBB, Assistant Trip Chairman  
Office: 792-3237 Home: 777-9644

■ ■

## MT. HOOD – EASTER

April 3–10, 1977 LIFTS INCLUDED! \$411.00

LINDA A. MacFARLAND, Trip Chairman  
Office: 792-4759 Home: 665-7088  
GREG THOMPSON, Assistant Trip Chairman  
Office: 983-3301, Ext. 2115 Home: 727-6116

■ ■

## TAOS, NEW MEXICO BUS TRIP

### Date to be Announced

SUSAN REHDER, Trip Chairman  
Office: 658-8140 Home: 621-4686



# markemaker markemaker markemaker

By Beth Nolen



**GEORGANA REPAL**

According to Georgana Repal, Aspen has never been the same after her first ski trip there at Christmas, 1971. Labeled "Queen of the Chairlift", she relates the details of acquiring this title as her most mem-

orable and definitely most embarrassing experience of her skiing career. Georgana has made a couple of less dramatic but nevertheless exciting trips to Vail and two trips to Steamboat. Last year's trip to Steamboat qualified it as Number One Area in her estimation, as it offers more good intermediate runs than other areas she has skied, and it holds the memory of accomplishing her goal of skiing "Heavenly Days".

Professionally, Georgana is a medical technologist in the laboratory of the Women's Hospital of Texas, a position acquired after graduating from Our Lady of the Lake in San Antonio with a degree in biology, and studying an extra year at the Methodist Hospital Medical Technology School. In addition to her laboratory work, she has taught a medical terminology course at Houston Community College for a year and a half.

Besides skiing, this native

Houstonian ("...and proud of it!") enjoys oil painting and art history. Combining her love of traveling and interest in history, she has spent summer vacations touring the prominent churches, cemeteries, and museums of numerous countries in Europe and in Mexico City. Having a more than pastime proficiency at playing the piano and organ, Georgana has played for various community and social functions. She shared her talent and experience with Space City Ski Club by organizing the music and playing the piano for our 1976 Follies. Expanding her travels and musical interests through non-ski Club trips, she attended the New Orleans Jazz Festival several years ago, and has made frequent visits with the Club to the New Braunfels Wurstfest. Georgana has been a perpetual volunteer for all Club activities during her six years of membership; highlighted this year by her service as a Lift-liner at monthly meetings.

**INTERNATIONAL  
SPORTS**

6381 Westheimer, Houston Telephone 783-6010  
SPORTS COMPLEX

THE SOUTH'S  
PRO SHOP  
CHARLOTTE  
AND  
HOUSTON

**ski shack, Inc.**

BRINGING TO HOUSTON THE SOUTH'S  
HIGH-PERFORMANCE SKI SHOP—THE  
ULTIMATE IN SKI CLOTHING, EQUIP-  
MENT AND PROFESSIONAL KNOWLEDGE

#### FEATURED LINES

##### CLOTHING

BECONTA  
DEMETRE  
LIBERTY BELL  
ROFFE  
SLALOM  
SPORT-OBERMEYER  
SWING WEST

##### BOOTS

DOLOMITE  
DYNAFIT  
HANSON  
KOFLACH  
NORDICA

##### BINDINGS

BESSER  
GEZE  
LOOK  
SALOMON  
SPADEMAN

##### SKIS

DYNASTAR  
FISCHER  
HEXCEL  
KASTLE  
OLIN

RENTALS— ALL NEW EQUIPMENT & CLOTHING

WORKSHOP— TOTALLY EQUIPPED AND OPERATED  
BY CERTIFIED SKI MECHANICS

"SKI REPAIR BY PEOPLE

WHO CARE"



**SKI\* HOUSTON**  
WINTER PROGRAM

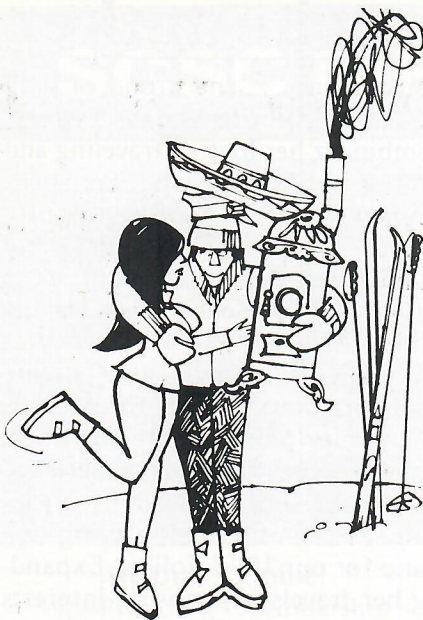
#### PROGRAMS

- 8 Hrs. Instruction (Conditioning and  
Advanced Parallel) . . . . . \$125.00
- 6 Hrs. Introduction to Skiing . . . . . \$85.00  
(1 Hr. Dry Land Instruction - all aspects,  
5 Hrs. Deck Instruction)
- 5 Hours Instruction (Conditioning  
and Edge Control) . . . . . \$80.00
- 1 to 4 Hrs. of Instruction . . . . . \$20.00 Hr.
- Open Ski Time (Expanded Hours) . . . \$10.00 Hr.  
(6 a.m. to 10 a.m. and 10 p.m. to 12 a.m.  
By Appointment)

REGULAR HOURS: 10:00 A.M. to 10:00 P.M. DAILY

6381 WESTHEIMER HOUSTON 782-4750





# How to keep warm (with your clothes on!)

Another tip is to keep from coming into direct contact with cold items, such as cold ski bindings, metal camera parts, cold metal chairlifts, or lying in the cold snow. (This can be rather difficult for us beginners to do!)

One hint on dressing warmly has to do with the thickness of the materials your clothes are made of. If the material is several layers thick, there will be some dead air trapped between layers, and this will aid in keeping you warm. Down is an excellent insulator due to this trapped air principle. If you keep your torso warm, your excess heat will naturally flow to your less insulated limbs.

You may also keep warm by increasing your body metabolism. Muscular tension exercises, which are done by straining one muscle against another, provide immediate heat for your body. Running around or stamping your feet also provide heat but not as efficiently as the muscular exercises. You can also increase your metabolism by having a quick bite to eat. The digestive process will help keep you warm.

**If your feet are cold, put on a hat!** You are probably wondering just how putting a hat on is going to keep your feet warm, right? Well, the principle behind this is, since your body will send blood to your brain first, your feet may not get enough blood and get cold. By putting your hat on, your head is already warm so your blood can circulate to other parts of your body, like your feet!

Try to avoid perspiring, because moisture has a tendency to cool your body down. You can do this by slowing down before you start to perspire, wearing ventilating net underwear, or wearing warm but loose clothing to allow the air to circulate.

You should be sure to keep the wind and rain from getting into your insulation by wearing waterproof or other suitable clothes as an outer covering.

If your hands have a tendency to get cold, mittens are better for keeping warm than are gloves, because your fingers are all together and create more heat for each other. Nicotine will shut down the blood supply to your extremities, so, if your hands are cold, don't smoke!

You've probably got some standard procedures for keeping warm (like snuggling up to your favorite ski lift partner) but, when all else fails, be sure to dress warm; keep out of the wind, rain, and snow; speed up your metabolism; try to avoid perspiring; and for heaven's sake, keep your hat on!

Courtesy ARIZONA SKIER

## CLUB PURGATORY

5757 WESTHEIMER

**Club Purgatory's** warm, congenial atmosphere will make you feel at home. Gather around our cozy fireplaces. Whether you come to **dance**, have **cocktails**, or enjoy the **game room**, you'll be among friends. **Happy Hour** is 5:00 to 8:00 p.m. Monday thru Friday with 2 for 1 drinks and complimentary hors d'oeuvres. Hungry? **Club Purgatory's** Hot Sandwiches really hit the spot for lunch or anytime during club hours 11:00 a.m. to 2:00 a.m.

**Come to Club Purgatory in the corner of Westheimer Plaza (between Chimney Rock and Fountainview) and join your friends.**

## swap shop

### MY MISTAKE, YOUR GAIN!

Men's 9½M Nordica boots, worn once. \$90.00 new, will sell for \$50. Call Floyd Walling: Office 661-6797 Home 681-4416.

**FOR SALE:** Brand new sweater, large, originally \$73. Men's pants 34-36. Will take \$20.00 for both. Call Emmitt Hutchins 661-1800.

**FOR SALE:** Skis Head 325 Westerners 205 cm. excellent powder ski, \$50. Boots size 10 San Marco Red \$70. Men's black Kastingers \$10. Profile parka size 40 Red, \$10. Two Russian fur hats, black. Call Cookie Wells - home 471-0918.

**FOR SALE:** Head ski boots used one season. Excellent. \$50. Call Jim Simons, home 497-3318 or office 656-0607.

**FOR SALE:** Men's Nordica 9 M with boot tree. Used twice. \$60. David Corley, 789-8000, Office or 780-9961 Home.

**SITTER:** Mature experienced babysitter wants week-end and vacation work only. Have car and health card. Phone 467-2733.



P. O. BOX 1126  
HILL & HYMAN  
ASPEN, COLORADO 81611  
(303) 925-7849

GALLERIA WEST  
2610 SAGE RD.  
HOUSTON, TEXAS 77056  
(713) 965-0412

# Sporthaus Lindner of Aspen

THE PRO SHOP FROM THE SLOPES OF ASPEN, COLORADO

## SKIS

- ATOMIC
- DYNAMIC
- DYNASTAR
- KÄSTLE
- KNEISSL

## BOOTS

- DOLOMITE
- NORDICA
- SCOTT

## CLOTHING

- ANBA
- ERESS
- FELLER
- FUSALP
- HCC
- KITEX

**LOOK**  
versada

**S**  
SALOMON  
CERTIFIED SALOMON SHOP

Our staff has over 50 years of experience in all aspects of skiing . . . including fitting boots and skis to your needs. We are so confident of our Staff's ability and experience in this field, that we offer a money-back guarantee on all fittings of boots or repairs.

RENTALS AVAILABLE

EXPERT SKI REPAIR  
OF ALL KINDS

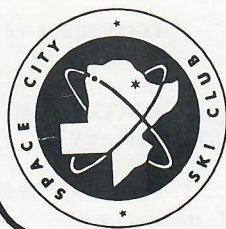
Visit our TENNIS, HIKING, BACK-  
PACKING and CLIMBING Departments.

Headquarters of Aspen Climbing School  
under the direction of STEVE SHEA.

.....SPECIAL FOR SPACE CITY SKI CLUB MEMBERS ONLY.....

"Tune-up" for your skis! A must before the ski season. The tune-up includes base repair, flat filing, edge sharpening, and hot wax. **PRICE — \$7.50.** One tune-up per customer. *The regular price is \$18.00 in Aspen.* Bring this ad and show your SCSC Membership Card.





SPACE CITY SKI CLUB  
P. O. Box 22567  
Houston, Texas 77027

**sitzmarke**

\*NOTICE — Open Carefully. Your  
MEMBERSHIP Card may be in this issue

**november**

DATED MATTER



FIRST CLASS MAIL  
U.S. POSTAGE  
PAID  
PERMIT NO. 9036



Left, Joyce Schwarz, Pins,  
Patches and Decals.  
Right: Janice Land and  
Lucy Crogey, Drink Ticket  
Table.



LOOK FOR PHOTO  
CONTEST  
IN DECEMBER

## REMEMBER

Below, Donna Berglund,  
Membership Table.



Below: Finn Runfalo with Trip Chairpersons and  
Assistant Trip Chairpersons.



## SEPTEMBER?

Below, June Russell winning  
the Aspen Spirit of '76 Race.





## S.C.S.C. TRIP INFORMATION

### BEFORE THE TRIP:

**Equipment:** Owned — Adjust bindings, Wear Boots, Clean & Sharpen Skis & Poles, Check & Clean Clothing.  
Rented — Decide on renting in Houston or at Area.

**Things to Consider:** Holidays - may be a problem in the area, especially Salt Lake.  
Beginners - for GLM lessons, renting in the area may be best.  
Houston - reserve your equipment in advance, check to see if ski shop will deliver to the airport.  
To avoid Problems - rent boots and skis at the same shop.

**Exercise:** This is a must for your safety and the utmost enjoyment of your trip. Exercise arms, legs, etc. everyday for at least two months before the trip leaves. (Ice skating, bicycling, and running up and downhill are good exercises.)

**Pre-Trip Party:** This is for last minute information and changes for your trip. Roommates are finalized. It's for your benefit to go.

**Numbers:** Leave the number of the lodging and plane flight no's with someone at home or office so that you can be reached in case of emergencies. Also the Trip Chairperson's name and Club Name might be useful, as well as the trip itinerary - since some trips may involve a large amount of travel time.

**Special Information:** Be sure and tell your Trip Chairperson about any special medical problems. Also who to notify in the event of an accident. The Trip Chairperson should know in advance if you want in non-smoking section on the airlines.

**Baggage:** It is desired to have only ONE bag per person. At some point in each trip, everyone must carry his or her OWN luggage and equipment. DO NOT take more than you are willing to carry two city blocks (uphill in the snow at 100F.). Your luggage is usually tagged at the ski area for the return trip, be sure and keep your luggage number. Your name must be on your luggage, skis, outer bag of skis and ski boots. Boots must be in a bag in order to be checked.

**DURING THE TRIP:** Remember, you represent S.C.S.C. and Houston, Texas at all times.

**RECOGNITION:** Club Pins and patches are available to you for easy identification on the slopes (everyone looks alike in ski wear). Decals are also available for your luggage to help identify it when in a large group. Turtle Neck Sweaters and T-Shirts are also available.

### CHECK LIST:

	1-wk 4 days			1 wk 4 days	
Long Johns	2	1	Ski Sweaters	2	1
Parka	1-2	2	After Ski Boots	1	1
Ski Pants	1-2	1	Chapstick	1	1
Turtleneck Shirts	4-6	2-3	Goggles/Sunglasses	1	1
Gloves or Mittens w/liners	1-2	1	Ben Gay	1	1
Outer (wool) Socks	3-4	2	S.C.S.C. Pin	1	1
Inner (Silk) Socks	2-3	2	Skis/Boots/Poles		
Warm up Pants (optional)	0-1	0-1	Informal Apres Ski Wear		
Face Mask (Optional)	0-1	0-1	(no coats/ties or dresses)		
Head Band (Optional)	0-1	0-1	If you can't get all the above items in one suitcase,		
Ski Hat	1	1	leave something at home.		

**REMEMBER** to carry your Parka, it will be cold when you arrive at the area.

### OTHER:

Ski Rental Averages \$      Day      \$      Week.  
Food averages about the same as in Houston. (If staying in Condo, you might want to consider cooking w/roommates in room. Good information to talk about at the Pre-Trip Party)

### INFORMATION:

For background information on the Club, contact the V.P. of Membership, P. O. Box 22567, Houston, Texas 77027. For questions, contact the Trip Chairperson or Assistant Chairperson.



## QUESTIONS AND ANSWERS

**Q. Can I get special rates on lift tickets?**

**A.** *Probably so — Check with your Trip Chairperson because he's done everything he can for group rates. (Don't forget RMD Members receive a \$5.00 discount on one lift ticket at most Colorado Areas.) Also, look into buying tickets good for a specific number of lifts. These can be a real savings when compared to Day Lift Tickets, especially in areas with long lift lines.*

**Q. How do I sign up for GLM Ski Lessons?**

**A.** *If your Trip Chairperson has not made prior arrangements, go to the Ski School as soon as possible and inquire. The Trip Chairperson may have Brochures which will give prices and schedules.*

**Q. This is my first ski trip and I plan to take three full day GLM Ski Lessons. Should I rent my skis, boots, and poles in Houston or at the Ski Area?**

**A.** *At the area. Ideas on equipment vary with instructors or your progress will warrant longer skis. This can be done if you rent in the area. A dependable ski shop asks questions of you before they decide on proper equipment, so let them help you pick out the proper ski equipment.*

**Q. Is there a deposit on the equipment or do you usually pay in full when you first check them out?**

**A.** *You usually pay for your rentals in advance. As with any rental agreement, know what you are paying and for what. If your rental is for more than one day, find out if they have a refund policy and what it states. Check for insurance coverage on breakage or lost equipment.*

**Q. Will most restaurants, shops and rentals accept Bank Americard, American Express or Master Charge, or should I carry a lot of cash or Travelers Checks?**

**A.** *Although most shops will accept Bank Americard or Master Charge, plan on carrying most of your expense funds in Travelers Checks. Remember most people avoid accepting personal checks. Also, items are known to be stolen or lost and many places do not accept American Express.*

**Q. I am a single girl and have never been skiing before. What do I do with my purse while I'm skiing?**

**A.** *Leave it at home. If you feel you can't take a trip without it, have the lodge put it in their safe until you are ready to return home — don't forget it. Remember you can't take it on the slopes, but most base lodges have lockers.*

**Q. Is it customary to tip a ski instructor?**

**A.** *Use your own judgement. It's just like your waitress or grocery boy, if they have done a super job and you want to — go ahead.*

**IF YOU HAVE SUGGESTIONS OR ADDITIONS, PLEASE LET SPACE CITY SKI CLUB OFFICERS KNOW. THIS WAS DESIGNED TO HELP YOU AS A MEMBER.**

**SEND TO: P. O. BOX 22567, HOUSTON, TEXAS 77027**