

**sitzmarke** march





## space city ski club

### 1972-1973 officers

JIM GRASSMAN . . . . .	498-3228
President	
JIM McINTYRE . . . . .	686-7809
Vice President - Trips	
WINTON ADAMS . . . . .	468-0132
Vice President - Programs	
SUSAN McCotter RAMSEY . . . . .	664-1882
Vice President - Membership	
DON LACKEY . . . . .	626-3519
Treasurer	
JANE MORGAN . . . . .	664-5028
Secretary	
MERRY MERRITT SCHENCK . . . . .	626-1881
Public Relations Director	

### executive board members

Miles Anderson	Jerry Maley
Rolf Beaudry	Pat McLaughlan
Virginia Blalock	Ron Rambin
Jerry Chiles	Dan Sebesta
Tom Cronin	Joyce Testa
Ron Crossman	Ed Williams
Tanny Koeppel	Bill Wright

### sitzmarke staff

<b>Publisher</b>	<b>Editor</b>
Merry Merritt Schenck	Jean Ubico

#### Cover Photograph

Willie Schaufelbuhl

#### Associate Editors

Janet Pickell	Tess Gillespie
Jean Ubico	Ed Williams

#### Contributing Editors

Peggy Adams	B-Line Magazine
-------------	-----------------

#### Advertising

Judy Gilbert	Halene Crossman
Diane McLaughlan	Marjean Doucette

#### February Lift Liners

Gini Blaylock, Judy Allen, Earl and Lovie Beard, Ken Cary, Jerry Chiles, Ron and Halene Crossman, Jim Easter, Jerry Kearby, Jane Marshall, Pat McLaughlan, Jere Moorman, David Ramsey, Finn Runfalo, Dan Sebesta, Don Smith, Helen Snyder, Nancy Sweeney

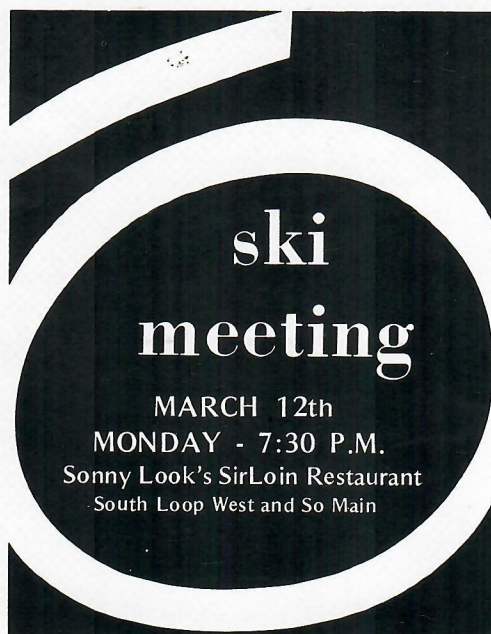
#### Membership Committee

Linda Grassman, Drink Tickets  
Sarah Fedak, Membership Verification  
Claudette Dinal, Guests  
Linda VanAstine, Membership Processing

#### Pins, Patches and Decals

Marie Pye

The Sitzmarke is published monthly by the  
SPACE CITY SKI CLUB



## ski meeting

MARCH 12th  
MONDAY - 7:30 P.M.  
Sonny Look's SirLoin Restaurant  
South Loop West and So Main

## notice

If you have moved, PLEASE complete the form below so that your new address will be in the '72-'73 Roster.

..... DO THIS NOW .....

The final date for the Roster Listings is MARCH 17th.

NAME	
ADDRESS	
CITY	ZIP
PHONE	

Mail this form TODAY to:

Susan Ramsey  
7490 Brompton, No. 216  
Houston, Texas 77025

## THE ONLY NON-STOP

HOUSTON — EUROPE

HOUSTON — MEXICO

AND STARTING APRIL 2nd

BOEING 747

**AIR FRANCE**

## from the head of the lift line

by Jim Grassman  
President

It is time to think about selecting new officers for our club. A nominating committee, under the chairmanship of Pat McLaughlan, is in the process of interviewing potential candidates. We want everyone who would like to serve to have an opportunity to run for office. I urge anyone who would like to run to submit their name to the nominating committee. If the committee feels they should nominate someone else for the job, the committee will notify the individual not selected prior to the March meeting, so that they may have the opportunity to be nominated from the floor. I must emphasize that the purpose of the nominating committee is not to exclude anyone from running for office, but to attempt to find the most qualified candidates who are willing to serve.

The By-Laws of our club state that nominations will be made at the March (12th) meeting with the election being held at the April (9th) meeting. Under the club by-laws, nominations may be made **only** at the March meeting. Following that meeting, nominations are closed, and no further nominations will be allowed the night of the election (April meeting). The nominating committee will enter into nomination one qualified candidate for each office. Nominations will then be accepted from the floor. Let me point out that to make a nomination from the floor, you must have first obtained the consent of the person nominated. Also the nominee must have been a member of the club for at least twelve months prior to the April meeting, and there must be a second to the nomination. New officers will take office on May 1, 1973.

It is essential to the continued success of our Club that we have good officers, therefore I urge everyone to take an active part in the nominations and election.



# 2

# ski trips

## jackson hole

MARCH 17-24

## park city

MARCH 31-APRIL 7

### park city, utah

**SKI THE WEST! PARK CITY, PARK CITY WEST AND SNOWBIRD! THIS IS YOUR LAST CHANCE, SO SIGN UP NOW.**

Leave Saturday morning, March 31 for the Salt Lake City Airport. Then only 35 minutes by bus to scenic Park City. Ski on your vacation . . . not bus.

In Park City, we'll stay at the C'est Bon Hotel located only one block from the chairlift. The C'est Bon offers large rooms, sauna, a Polynesian restaurant and a night club with a stripper.

The streets of Park City, once a boom mining town, are lined with saloons, restaurants . . . experience apres ski in a unique environment. For true regional flavor, dine and drink at old time saloons such as Solid Muldoons or the Red Banjo.

We will bus from Park City to Alta and Snowbird for a wide variety of ski challenges on the best snow in the country. From a 9,400 foot summit, forty runs blanket more than 37 miles of skiing terrain. High capacity lifts keep you skiing, not waiting.

We will depart Salt Lake City on Saturday, April 7. The cost for this unique ski adventure is only \$241. Join us.

**March 31-April 7      \$241.00**

Trip Chairman:

Ed Fedak

5840 Glenmont, No. 94, 77036

Hm.: 664-6813 / Off.: 222-2613

Assistant Trip Chairman

Jane Brandle

Hm.: 946-6162

## JACKSON HOLE

The Jackson Hole trip is still full, but the waiting list has dwindled considerably. Don't take a chance on missing the most exciting trip Space City Ski Club has presented. Send your \$50 check now so you can make this trip. There are bound to be last minutes changes, so be sure you're in line.

Departure to the beautiful Jackson Hole country will be at 7:55 am on March 17 via Continental Airlines. There will be forty-four boarding for an enjoyable two hour breakfast flight to Denver. We will than transfer to Frontier Airlines for an 11:00 am departure to Jackson Hole. A bus will meet us in the Jackson Airport at 12:30 pm and take us the remaining 22 miles to Teton Village, at the base of the most fantastic ski mountain in the United States.

Lodging will be at the Snow Ridge and White Ridge Condominiums which are luxurious two and three bedroom units with loft and stove fireplaces. They are located within walking distance of the lifts and restaurants. A get-acquainted party will be held in one of the units the night of our arrival. Several other parties are planned, including a "beer" race on the slope. Be sure and practice up on this part of the race here in Houston.

Our pre-trip party is planned for March 8 at the Woodhollow Club. Details will be forthcoming. Don't miss this important get-together. Should you live out of town or can



not make this party for some other reason, information pertaining to the trip will be mailed to you.

Due to the distance involved, this trip may not be on our annual trip schedule; if you're not there already, sign up for Jackson Hole now!

March 17-24      \$280.00

**Trip Chairman:**

Harry Gaston  
10150 Eddystone Dr., 77043  
Hm.: 468-7414 / Off.: 228-8711

**Assistant Trip Chairman:**

Margie Fannette  
Hm.: 626-8197 / Off.: 224-5301



**ROSTERS AVAILABLE**

For new SCSC members - see the Sitzmarke Editor at the membership table at the March 12th Meeting.

**THERE'S A NEW  
COLORADO MOUNTAIN  
TO CONQUER**

**STAGECOACH**

It's only 15 short miles  
south of Steamboat Springs

**SKIING AND  
PROPERTY**

**It's More Than a Mountain!**

For more information, call  
713 / 783-5700 or write:

NAME \_\_\_\_\_

ADDRESS \_\_\_\_\_

CITY \_\_\_\_\_

STATE \_\_\_\_\_

**STAGECOACH**

**NEW HOUSTON OFFICES:**

The Woodmoor Corporation  
6620 Harwin Drive, Suite 105  
Houston, Texas 77036

**J. RICH SPORTS  
Ltd.**

*Annual Ski Sale Extravaganza*

**MARCH 15th, 16th and 17th**

**8:00 A.M. - 9:00 P.M.**

**ALL SKI EQUIPMENT - The Village**  
**SKI CLOTHING - The Galleria and The Village**

**2367 RICE BLVD. - 529-8767**

**1340 GALLERIA - 626-3650**

**off  
the  
slopes**

by  
Tess  
Gillespie



SKI POWER — Aspen Glo - Breckenridge Bronze . . . all those great looking tans that only lots of sun and snow can produce. The February ski meeting was buzzing with skiers just returned from the slopes and skiers on their way . . . Barbi and Dr. Harris Hauser were back again from their Breckenridge house and will be leaving again for Vail. While they were in Breckenridge, they entered the NASTAR Races, that's all they would tell me about that event - they entered it and finished it. (Watch out, Stein Erikson, Harris Hauser is really slick on those new skis of his, or is it those dark sunglasses that help him schuss down those suns?) . . . Harry Gaston entered that same NASTAR Race but one of his skis broke — I understand he did quite well in the Mahogany Ridge Run though!

SITZMARKERS — Janet Hendrickson back from skiing in Italy, France and Switzerland will leave again for skiing on the SCSC Europe trip. . . Bill Jakle will be making his first trip with our club doing the Europe ski scene. Gay Flynn, Bob Fleming

and his friends will join Barbi and Harris Hauser in Colorado. . . Bright new face in the crowd, Jeannie LaBree has just moved here from Denver and is with McGraw-Hill. I hope you were able to catch SCSC poet John Boynton giving a reading at the Family Living Center — he is really marvelous!

SCHUSS — What are you doing this summer? Pat McLaughlan has a great price on a trip to Europe in June — call him if interested. . . Tennis, anyone? Lessons, clinics, tournaments intramurals, and tennis weekends - trips for beginners to advanced players at the T-Bar-M Ranch. My tennis Pro, Dave Bary has fantastic programs for anyone interested in this great way to schuss through the off-the-slopes season. He can be reached at 781-4284.

See you at the March meeting - be sure and come. Ski season is just about over and if you would like to help in the SCSC summer activities, let me know at the meeting.

**“swap shop”**

- LANGE STANDARD BUCKLE BOOTS, used 6 times only. Ladies' size 5½N, new \$110, now \$30. Call Sandra Williams, 781-2244.
- MEN'S ROSEMOUNT SKI BOOTS, completely adjustable to fit sizes 10 to 12, like new, \$45. Call Doug Allen, 527-8774.
- LADIES' LeTRAPPEUR SKI BOOTS, like new, size 6½. \$40. Call Nancy Winslow, 623-2850 Office.
- K2-3 185 cm SKIS, never used; MEN'S LANGE STANDARD BOOTS, 9M, slightly used; call Roy Gowell, 781-1159 after 6:00 or 623-4300 Office.
- NORTICA BUCKLE BOOTS, Ladies size 8, good condition, call Magit Winstrom, 497-5110.



## MEMBERSHIP

SINGLE . . . . . 770  
MARRIED . . . . . 380

TOTAL . . . . 1,150  
as of February 21, 1973

## ski tips

By Ed Williams

Certified Instructor  
RMSIA and PSIA

You will need to review last month's article, for I am going to elaborate on a significant factor called the **neuro-muscular control** (nerve impulses) of skiing.

To reiterate, as the nerve impulses are taught by repetition, the brain becomes less involved, and maneuvers become automatic. If you learn the incorrect way, then you automatically revert to the wrong nerve impulse, especially in a tense situation. The retraining process is often a painful experience, for first the rut on the nerve impulse must be erased and re-trained.

So it is apparent the correct basic should be learned from the beginning. This is the reason I favor the American Teaching Method (ATM) rather than the more popular GLM (Graduated Length Method). ATM stresses learning the basic factors first. In teaching, we instructors talk about the progression of ski instruction. Each exercise the instructor gives you, from the wedge or the snowplow to sideslipping, is designed to train a natural rut on your nerve impulses. As the student learns each progression, he has something to fall back on when he gets in trouble. You've seen the skier in trouble who makes a good recovery: this is because he falls back on a properly trained reaction. A comparison of the two techniques would seem to indicate that the GLM skier progresses faster than the ATM learner up to a certain point. From that point, the ATM skier progresses at a much faster rate. This is because the ATM skier concentrates on basics and does not have to retrain his impulses to go on to better skiing.

# ski

## play your last shot

TO SKI WITH THE CLUB IN '73

EASTER COMES LATE AND WE

LIKE TO SKI SNOW!!!



## Park City

## spring ski fans:

TRY PARK CITY - MARCH 31 - APRIL 7

DEEP POWDER SNOW GUARANTEED!

SKI IN STEIN ERICKSEN'S SKI SCHOOL!

IT WILL BE YOUR LAST CHANCE THIS  
SEASON TO SKI IN IDEAL SNOW CONDITIONS!

DUE TO THE LATE DATE OF EASTER - APRIL 22nd,  
THERE WILL BE NO EASTER TRIP, SO . . .

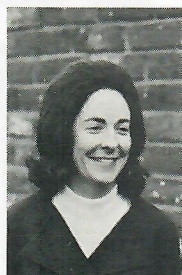
SIGN UP NOW FOR

PARK CITY - PARK CITY WEST - ALTA - SNOWBIRD



# marke makers

by Jean Ubico



Amid stocking up on crates of fine French wine as a defense tactic against the devaluation of the dollar and tending the needs of a newly acquired Japanese Bonsai tree, Pat and Diane McLaughlan pursue their favorite form of the good life . . . travel.

They prefer company on their journeys. An experienced Club trip chairman, Pat came to appreciate the advantages of group travel with compatible people. He also acquired no small amount of expertise in the travel industry.

The spin-off is an epicurean social group calling itself Gourmets Unlimited which sets off to sample the fine foods and wines of the world in authentic settings. Locally they've dropped in on the Hilltop Herb Farm in Cleveland for a gourmet meal in a greenhouse and a sip of the potent home brewed house wine.

The jazz clubs and night spots of New Orleans have beckoned the group as have the more distant foreign ports of Acapulco and Mexico City. The European capitals in the summertime and San Antonio Fiesta Weekend are future events.

Relative newlyweds, Pat and Diane celebrated the formalities last year with a series of honeymoon trips that began at the Animal Kingdom in Mesquite and eventually progressed to the Italian Alps. Between excursions, Diane teaches a fourth grade class for the Spring Branch school district, and Pat is an engineer in a NASA technology utilization program.



**Hello Skiers:**  
Come on over to Sonja and Herman apres'Ski Chalet . . . Dance to the latest echo of the Matterhorn.

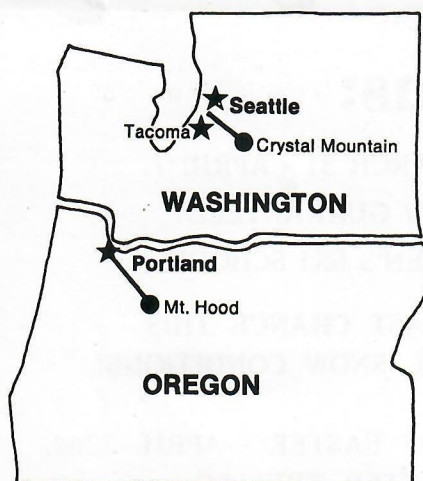
## Swiss Chalet Restaurant

511 South Post Oak Lane, Off Woodway  
Phone: 621-3333

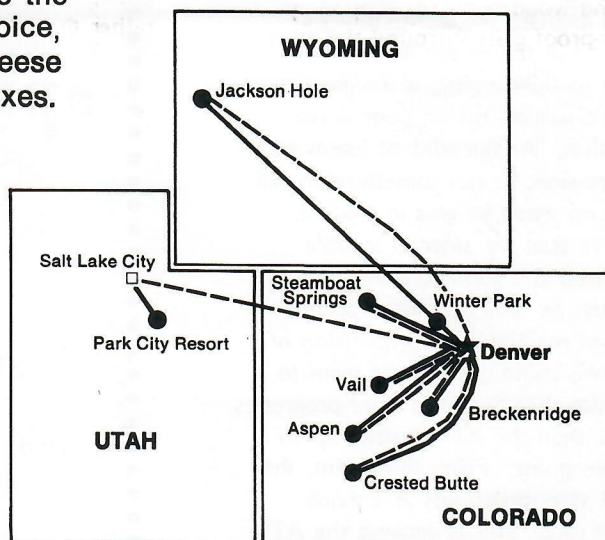
# Ski Braniff to snow country

Spend a fun-packed 4-day, 4-night ski weekend, Braniff Style, for as little as \$89.00 per person, plus air fare. Package is based on double-room occupancy. Your unforgettable ski holiday includes first class accommodations, motorcoach

transfers from Denver to the ski resort of your choice, a special wine and cheese party, and all tips and taxes. Lots of other Braniff Style ski packages are also available. For more information, including a colorful brochure, call 621-3111.



- Ski resorts
- ★ Gateway cities served by Braniff International
- Surface transportation
- - - Connecting air line service



# You'll like skiing Braniff Style.



# mayhem on ice

Reprinted from B-LINE

They call it hockey, but to the growing legion of fans throughout the United States and Canada, it's the fastest, most slam-bang sport they have ever seen. Take twelve men, staunch and true, give each one a wooden stick, throw a one-inch thick vulcanized rubber disc on the ice and watch out. The game is on and where it ends only the final score knows.

The fury, speed and rib-smashing action guarantees the ultimate in sports entertainment. Grinding physical contact, team play and the sheer beauty of motion combine to make hockey perhaps the most action-paced of all athletic contests.

But the real fun of hockey, from the fan's standpoint, is in understanding the game . . . and one of the best places to begin is to see the Houston Aeros in constant hard-hitting action. Each game is 60 minutes of continuous action . . . truly something exciting to see especially if you know what you are looking at.

Hockey is played on an official ice rink 200 feet long by 85 feet wide. The ice surface is marked with painted lines to designate various areas. A goal (or net) is at each end, and wooden boards topped by shatter-proof glass surround the entire rink. When a puck hits the glass at 100 miles per hour, spectators appreciate it being there.

Obviously the idea is to get the puck into the opposite team's goal. The only time a goal does not count is when the puck is kicked or thrown into the net or deflected with a high stick held above a player's shoulders at the point of impact. Any other way constitutes a score worth one point. The game starts when the referee (the striped-shirted official with the red arm band) drops the puck in a face-off between the opposing centermen in the center ice circle.

HOUSTON  
**AEROS**

MARCH 13	TUESDAY	AT PHILADELPHIA
MARCH 14	WEDNESDAY	AT NEW YORK
MARCH 18	SUNDAY	(Home) NEW YORK RAIDERS
MARCH 19	MONDAY	(Home) PHILADELPHIA BLAZERS
MARCH 21	WEDNESDAY	(Home) PHILADELPHIA BLAZERS
MARCH 25	SUNDAY	(home) CLEVELAND CRUSADERS
MARCH 27	TUESDAY	AT NEW ENGLAND (Boston)
MARCH 29	THURSDAY	(Home) NEW YORK RAIDERS
MARCH 31	SATURDAY	AT QUEBEC
APRIL 1	SUNDAY	AT OTTAWA

In order to keep the mayhem under some control, there are certain rules that have to be followed. While we are not going to go into a lengthy discourse at this time about offsides, icing the puck or other infringements, suffice to say, when you attend a game, it won't take too long for you to identify the miscues and before you realize it you'll be joining the other fans in disputing the referee's call especially when it's against your favorite team.

In a game as fast and with as much personal contact, things sometimes get a bit out of hand. In the heat of battle, players might become slightly over-anxious, more so with a stick in their hands. (Sometimes they discard the stick and resort to fisticuffs). To maintain control, penalties are called whereby the guilty player is removed from the ice and reprimanded to the penalty box, usually for two minutes playing time. Major penalties for more serious violations can range from five minutes to ejection from the game, but these are the exception rather than the rule.

However, don't get the idea that the rules and penalties tend to slow up the action. Without them, we could

define each player as a gladiator, with them there is some semblance of control and humane protection.

From the goalie to the defensemen to the wingmen to the center, each team is on the move from the opening whistle to the final movement of play. And if you are like most people, you'll be enthralled by the nonstop action that unfolds before you. Whether a seasoned spectator or not, you'll find more to learn about hockey each time you attend a game. Even the special hand signals of the officials have meaning, and getting to know and understand them will add interest to your viewing pleasure.

Yes, hockey is really Mayhem on ice, and it has been since the very first days of its inception, somewhere in the cold country on a small frozen pond, perhaps behind an abandoned barn. Today, as one of the fastest growing spectator sports, played in huge indoor stadiums it's action at its best, combining talent, perseverance, and the challenge of competition that keeps bringing fans back for more of Mayhem on Ice.

**RUTH ROY's**

*Locked In* **SPORTS**

**SEASON END CHAMPAGNE SKI SALE**

Begins

**MARCH 15, 1973**

**Champagne Served Thursday - 6:00 to Midnight**

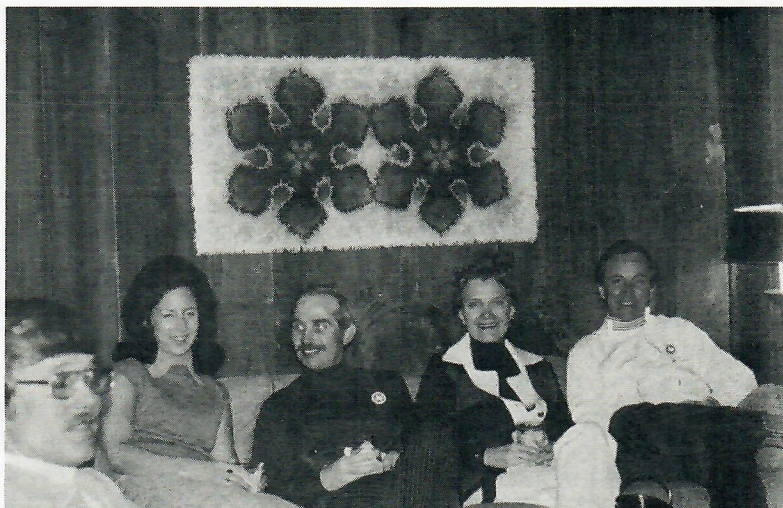
**INVITED GUESTS AND SCSC MEMBERS ONLY**

**SKIS AND ALL ACCESSORIES ON SALE**

**9703 KATY FREEWAY**

**713 / 464-2873**





# 5 aspen

The traditional Aspen trip was everything it always is and more. This year we were in Aspen for the Winterskol 1973 which is very much like a Mardi Gras. We witnessed a finale of events on Saturday and Sunday with events such as the Torchlight Descent down Little Nell along with a super Fireworks Display on Little Nell which added quite a finish to the Wallises and Maddoxes annual seafood feast on Saturday evening. There was also Motocross on ice, a Parade, Ski Joring (horses pulling skiers over a racing obstacle course), Ski Splash (funny antics off a ski jump into a pool), a Mad Hatter's Ball which required only a funny hat for entry, all of this with the theme of "These Are The Good Ole Days", and they really were!

The snow was great as usual and the days sunny. In the middle of the week we had one day of hard snowing which gave a few of the braver skiers a chance to ski powder. The one and only casualty was Jerome Pesek who came home in a cast with torn ligaments in his knee, but with the cocktail parties that went on every evening, Jerome's week went pretty fast. A party was

given by Mike Kelly one evening, with an open bar which everyone enjoyed. On two other occasions, different groups of guys got together and gave parties with almost lethal results. Miles Anderson and group gave their annual bash at North of Nell and the condominium management gave us another party.

On Tuesday the Buttermilk management gave us a Wine and Cheese party at noon with downhill races afterwards. Almost everyone participated. The winners were announced at the Post Trip Party on February 20th. For the Men: Class A - Willi Schaufelbuhl; Class B - Ron Crossman; and Class C - Scott Grandlund. For the women: Class A - tie between Dorothy McCormack and Kay Nevels; Class B - Roberta Myers and Class C - Carolyn Carothers.

On Thursday, Aspen Highlands set up an Obstacle Course Race for us. The fastest time through the maze belonged to Chuck Thompson, with Warren Michaels taking second place. Juanita Michaels got the boobie prize for taking the longest time to go through the course, which

was by no means easy. Ask Juanita to see the poster she won. Nancy Pfluger had the fastest time for the women.

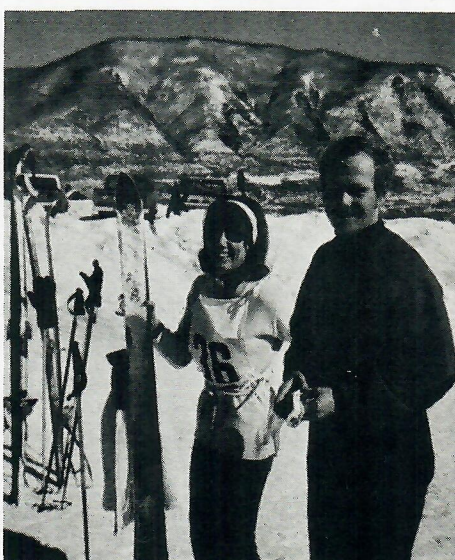
The Texas International Flights were perfectly on time, and the Chateaux Eau Claire and Roaring Fork Condominiums were like a home away from home with all the modern conveniences and appliances. They even furnished a shuttle back and forth around Aspen. Everyone was pleased with the smooth flow of the whole week.

As usual the old familiar places were full of SCSC members nightly. Places like The Tippler, Red Onion, Crystal Palace, Copper Kettle, the Shaft, the Slope and our own condominium living rooms in front of the fireplace, of course.

The nicest part of the whole week was the management and coordination furnished by our Trip Chairman Kay Nevels and Co-Chairman Chris Read. Congratulations to Kay and Chris for one of the finest Aspen trips ever!

Peggy Adams  
Trip Participant





6

steamboat (NEXT ISSUE)

7

zermatt (NEXT ISSUE)





SPACE CITY SKI CLUB

P. O. Box 22567

Houston, Texas 77027



FIRST CLASS MAIL  
U.S. POSTAGE  
PAID . 16¢  
PERMIT NO. 9036

DATED MATTER

sitzmarke

march 1973

## about houston

march

by Janet Pickell

march

sunday	monday	tuesday	wednesday	thursday	friday	saturday
<b>MARCH - APRIL 1973</b> Key to Abbreviations: AT - ALLEY THEATRE BDT - BALINESE DINNER THEATRE CAM - CONTEMPORARY ARTS MUSEUM COL - SAM HOUSTON COLISEUM CP - COUNTRY PLAYHOUSE			DG - DEAN GOSS DINNER THEATRE HP - HOFHEINZ PAVILION MFA - MUSEUM OF FINE ARTS MH - MUSIC HALL SWTG - SOUTHWEST THEATRE GUILD TS - THEATRE SUBURBIA WDT - WINDMILL DINNER THEATRE			Colette, AT, thru April 1 Lorelei with Carol Channing, MH, thru March 10 Rudolph Nureyev with National Ballet of Canada, Jones Hall, thru March 11 Holiday on Ice, COL., 8:00 Houston Rockets v. Baltimore HP, 8:00
Houston Rockets v. Atlanta, HP, 1:10 Holiday on Ice, COL, 2:00 and 6:00 Miss Reardon Drinks A Little Play, MH, 7:00 Norman, Is That You?, BDT, thru April 1	<b>SCSC MONTHLY MEETING</b> Look's Sir Loin Inn, 7:30 Frank Zappa, MH, 8:00	Anita Bryant, Chi Omega Chautauqua, Jones Hall, 8:30 Mary, Mary, starring Marjorie Lord opens WDT, thru April 15 Joe Goode, Exhibit, Sculpture, Paintings, Prints, Upstairs Gallery thru 4-22; Billyal Bengston, Water Color Exhibit, Lower Gallery, thru 4-15 - CAM	Masterpieces of Five Centuries, Sterling Galleries, MFA, thru September 1973	Andres Segovia, Jones Hall 8:30	Marcel Marceau, Jones Hall My Three Angels, SWTG, 8:30	<b>SCSC JACKSON HOLE SKI TRIP</b> Henry Moore's Elephant Skull, Exhibit, MFA, Masterson Gallery, thru 4-15 My Three Angels SWTG, 8:30 Marcel Marceau, Jones Hall
<b>SCSC JACKSON HOLE SKI TRIP</b> Houston Aeros v. New York COL, 7:30 Carlos Montoya, Jones Hall, 8:00	<b>SCSC JACKSON HOLE SKI TRIP</b> Houston Aeros v. Philadelphia, COL, 7:30	<b>SCSC JACKSON HOLE SKI TRIP</b>	<b>SCSC JACKSON HOLE SKI TRIP</b> Houston Aeros v. Philadelphia, COL, 7:30	<b>SCSC JACKSON HOLE SKI TRIP</b> Mac Davis, MH, 8:00 Bette Midler, MH, 8:00	<b>SCSC JACKSON HOLE SKI TRIP</b> Don't Drink The Water, CP, thru April 8 My Three Angels, SWTG, 8:30 The Allman Brothers, HP, 8:00	<b>SCSC JACKSON HOLE SKI TRIP</b> My Three Angels, SWTG, 8:30
Houston Aeros v. Cleveland, COL, 7:30 Houston Rockets v. Boston, HP, 8:00	Houston Symphony Jones Hall, 8:30	Houston Symphony Jones Hall, 8:30		Houston Aeros v. New York, COL, 7:30	My Three Angels, SWTG, 8:30	<b>SCSC PARK CITY SKI TRIP</b> Humble Pie, COL, 8:00 Ferrante & Teicher, MH, 8:30 My Three Angels, SWTG, 8:30 Arthur Fiedler, Concert & Dancing, Albert Thomas Convention Center
<b>SCSC PARK CITY SKI TRIP</b>	<b>SCSC PARK CITY SKI TRIP</b>	<b>SCSC PARK CITY SKI TRIP</b> La Forza Del Destino Houston Grand Opera Jones Hall, 8:00	<b>SCSC PARK CITY SKI TRIP</b> Herman Prey Jones Hall	<b>SCSC PARK CITY SKI TRIP</b>	<b>SCSC PARK CITY SKI TRIP</b> La Forza Del Destino, Houston Grand Opera Jones Hall, 8:00 My Three Angels SWTG, 8:30	<b>SCSC PARK CITY SKI TRIP</b> La Forza Del Destino Houston Grand Opera (performed in English) Jones Hall, 8:00 Shawn Phillips, MH, 8:00 My Three Angels, SWTG, 8:30
<b>NOTES:</b> AT, all productions, Opening Thursday 8:00, Tuesday-Friday 8:30, Saturday 5:00 and 9:00, Sunday 2:30 and 7:30. Lorelei, MH, performances Friday, March 9, 8:30; Saturday 2:30 and 8:30. Rudolph Nureyev, Jones Hall, performing La Sylphide, The Moor's Pavane Friday, March 9 at 8:30; Swan Lake Saturday at 8:30 and Sunday at 2:30, Swan Lake Matinee Saturday at 2:30 features principal dancer other than Nureyev. TS, performances Fridays and Saturdays at 8:30. WDT, all plays, performances daily except Monday, buffet begins 6:45 p.m., curtain 8:30, Sunday buffet begins 12:30 and 6:45, curtain 2:00 and 8:30. DG, all productions, performances daily except Monday, buffet 6:30, curtain 8:30. BDT, performances Thursday-Saturday at 8:30, dinner 6:00, Sunday at 7:30, dinner 5:00. CP, performances Fridays and Saturdays at 8:30, Sundays at 7:30.						