



**sitzmarke**

december





## space city ski club

### 1972-1973 officers

JIM GRASSMAN . . . . .	498-3228
President	
JIM McINTYRE . . . . .	686-7809
Vice President - Trips	
WINTON ADAMS . . . . .	468-0132
Vice President - Programs	
SUSAN McCotter RAMSEY . .	664-1882
Vice President - Membership	
DON LACKEY . . . . .	626-3519
Treasurer	
JANE MORGAN . . . . .	664-5028
Secretary	
MERRY MERRITT . . . . .	626-1881
Public Relations Director	

### executive board members

Miles Anderson	Jerry Maley
Rolf Beaudry	Pat McLaughlan
Virginia Blalock	Ron Rambin
Jerry Chiles	Dan Sebesta
Tom Cronin	Joyce Testa
Ron Crossman	Ed Williams
Tanny Koepfel	Bill Wright

### sitzmarke staff

<b>Publisher</b>	<b>Editor</b>
Merry Merritt	Jean Ubico
<b>Cover Photograph</b>	<b>Photographs</b>
Deene Sullivan	Pat McLaughlan
<b>Illustrations</b>	
Ken Griffin	
<b>Associate Editors</b>	
Janet Pickell	Tess Gillespie
Jean Ubico	Ed Williams
<b>Contributing Editors</b>	
Pat Waltman	Jerry Chiles
Jo Ann Reine	Lee Wible
<b>Advertising</b>	
Judy Gilbert	Diane McLaughlan
Marty Conner	Marjean Doucette

**Lift Liners Committee** - Gini Blalock, Judy Allen, Jim Easter, Diane and Pat McLaughlan, Darwin Miller, Don Smith, Helen Snyder, Nancy Sweeney, Joan Whitten, Lynn Blanton, Ken Cary, Jim Coyle, Ron and Halene Crossman, Jane Marshall, Warren Michaels, Dan Sebesta

#### Membership Committee

Linda Grassman, Drink Tickets  
Sarah Fedak, Membership Verification  
Claudette Dinal, Guests  
Linda VanAstine, Membership Processing

#### Pins, Patches and Decals

Marie Pye

The Sitzmarke is published monthly by the  
SPACE CITY SKI CLUB

## from the head of the lift line

by Jim Grassman  
President

Congratulations to S.C.S.C.'s own Ruth Roy (of Locked In Sports) for the latest in fashions presented at our November meeting. Also many thanks to Joann Reine, Roxanne McKenzie, Jay Castille, Frank Riensenberg, and all the people who worked so hard to make our annual fall fashion show a big success.

Have you signed up for one of our fabulous ski trips. Are you on a waiting list? If you are currently waiting behind 40 or 50 other hopefuls to become an active participant on a ski trip, perhaps you should consider one of the other areas. How about Steamboat Springs, Vail (Texas Ski Week), Jackson Hole, or Park City.

The way things are shaping up, this year should prove to be the most successful yet for S.C.S.C. Don't be left out in the cold without a place to ski. Become an active member of a trip by sending in your deposit today.

Do you have an S.C.S.C. pin? While on a trip, make sure it is seen. It will prove to be an excellent means of instant identification, not only on the slopes but also at those fabulous club parties. A number of friendships have come from conversation in a lift line which started by someone saying "Oh, you're from Texas", or "Where is Space City?" The next time you go skiing, let your club pin be seen.

**Bank of Texas**  
One Shell Plaza and The Esperson  
Building, Houston, Texas  
Correspondent Banks  
in All Texas Cities

## ski meeting

DECEMBER 11th  
MONDAY - 7:30 P.M.  
Sonny Look's SirLoin Restaurant  
So Main and So. Loop West

## january meeting

Changed to THIRD Monday  
JANUARY 15th

#### MEMBERSHIP

as of November 1, 1972

Singles - 577      Marrieds - 284  
TOTAL . . . . . 861

#### We've Got the Ski Bug Too!

Jack Blanton wants to give your ski clothes the same personal attention he gives his own. . .

LET JACK

CLEAN - REPAIR - WINTERIZE  
YOUR GEAR

20% Discount on Ski Clothing  
to all S.C.S.C. Members

Two Locations to Serve You:

■ WARREN CLEANERS

1411 Richmond - 529-6155

■ VALET CLEANERS

Sage & Westheimer - 622-5997





### STEIN ERIKSEN TO VISIT SPACE CITY

If you've always wanted to see a real two-time Olympic Gold Medal Winner, now is the time. Come early to the December meeting to hear the one and only Stein Eriksen!

Our enthusiastic Park City Trip Chairman, Ed Fedak, has pulled the right strings and arranged to have this very special guest come to Houston.

You will hear of the wonderful skiing at Park City and see a great film on the area all brought to us by Stein Eriksen, Director of Skiing at Park City.

A world renown skier in competition and style, Stein is a past winner of Olympic gold and silver medals and a World Championship gold medalist in slalom and combined events.

His famed innovation in ski technique, reverse rotation, is characterized by reverse shoulder and delayed shoulder turns. Stein is also identified by his flamboyant trademark, the mid-air somersault on skis.

As Ski Director for the picturesque Utah area, he will escort members via a film, "Skiing Park City" over the powder covered slopes, down a twisting slalom course and through the thick of the resort's Hot Dog Skiing Contest. Don't miss an Olympic Gold Medal Winner, December 11th.

## park city, utah

### UTAH! SKI THE WEST!

**Location:** Get to the slopes faster. Park City is only 35 minutes from Salt Lake City and it's International Airport. So you spend vacation time skiing - not bus riding.

#### The Town: Turn of the century images:

As a boom mining town, Park City's population of 10,000 supported 23 saloons, five breweries, innumerable hotels and bawdy houses. Much of the character of the old remains. Narrow, winding streets - quaint, gabled houses - evidence of old mines - combine this atmosphere with the conveniences of a modern resort.

#### Night Life: Western style.

For regional flavor, visit an old time saloon such as Solid Muldoon's or the Red Banjo. For specialty dining try Mexican dishes at Utah Coal & Lumber Restaurant or health food at Poison Creek. Dine elegantly at Car 19 or the Claim Jumper.

#### Ski: A beautiful place.

High capacity lifts keep you skiing, not waiting. Seven double chairlifts, along with the west's longest four-passenger gondola, offer a lift capacity of 8,000 skiers per hour. Forty runs blanket more than 37 miles of skiing terrain. From 9,400 foot summit to the base station, there are plenty of runs for all levels of skiers.

#### Lift Rates: '72 - '73

Type of Ticket	Rate
All Area - All Day	\$7.50
All Area - Half Day (after 1 pm)	5.50
Night Pass (4:30-10:30 pm)	5.50
First Time Lift Day Pass	2.00
Three Day Lift Package	21.00

**The Ski School - STEIN ERIKSEN, DIRECTOR OF SKIING.** The American Technique is taught by Park City's Ski School Staff of 35 full time and 60 part-time professional instructors. The GLM approach is featured with the required equipment available at all local shops. Ski School Class Members participate in races on Fridays, followed by a free wine and fondue party.

### SPACE CITY IN UTAH

Spend a week in Utah for the best spring skiing. We will be staying at the C'est Bon Hotel in Park City one block from the chairlift. The C'est Bon offers large rooms, sauna, Polynesian restaurant and night life.

We will leave Houston on Saturday morning, March 31st, via Texas International and return to Houston on April 7, Saturday.

**Ski four excellent areas:** Park City, Park City West, Alta and Snowbird. Bus service will be provided daily for anyone wishing to ski these areas.

### IF THIS IS WHAT YOU WANT:

- Wide variety of skiing in the best snow;
- Plenty of entertainment and excellent dining;
- Quaint little stores in which to shop;
- Skiing on the longest (14 miles) night lighted ski run;
- Little or no lift lines;
- Ski instructions by Stein Eriksen.

For a totally exciting vacation, sign up now! The trip is filling up!

**March 31-April 7 \$241.00**

#### Trip Chairman:

Ed Fedak  
5840 Glenmont, No. 94, Ho. 77036  
Hm.: 664-6813 / Off.: 222-2613

#### Assistant Trip Chairman:

Jane Brandle  
Hm.: 946-6162





# NORDIC SKIING-

## a new old method of skiing...

By Pat Waltman  
Wilderness Equipment, Inc.

Nordic ski touring is the recreational refinement of a transportation method over 4000 years old. It's a "ski anywhere" sport: up hills, down hills, on level ground, wherever there is snow. Ski touring is different from Alpine (downhill) skiing, in which the skier wears a rigid boot fixed firmly to a heavy, wide ski, and where the skier's mobility is limited to downhill motion.

The ski tourer uses a light, flexible, tough ski, made of wood, together with a light soft boot which is attached to the ski allowing the boot to pivot vertically. This

enables the tourer to move with a kick and glide method, much like an ice skater. Complementing this gear are light, springy bamboo ski poles, and waxes that enable the skier to ski straight up hills and to glide forward as well.

Touring equipment is much lower in cost than Alpine gear. A complete outfit (skis, boots, poles, bindings, and waxes) of the best quality will retail for under \$90.00. The Nordic skier's wardrobe usually consists of knickers, over-the knee wool socks, sweater and a windshell. Colder weather additions would include - down jacket, stocking cap, gloves, net long-johns, and nylon gaiters.

### Types of Skis.

There are three common categories of touring skis. The most popular is the traditional touring ski, about 58 mm wide at the binding. The least common is the racing ski (46-50 mm width) which is extremely light weight. A new design called the turlett or tur-langrenn (50-53 mm) com-

bines the structural design and quick response of the racing ski with the strength of the standard touring ski. The result is a ski that is light, lithe, responsive and very touch.

### What type of ski for whom?

To begin with, we must consider flotation - the ability of a ski to keep you on top of the snow. On paper, it's a function of surface area, so the wider ski should offer a pronounced advantage. In practice, it's a function of length of ski, and flexibility of the tip and shovel area. A ski is not a snowshoe. It's not stomped down into the snow. A ski is swung forward with horizontal motion and follows a gliding trajectory. The flexible, lightweight ski will ride high across the snow. In deep fresh powder, as encountered in Rockies, there- the standard (or mountain more flotation. This is a result

of an unusually flexible tip and shovel section design that rides up and over the snow, packing it along a gentle inclination, as opposed to a stiff tip that bucks the snow and pushes it ahead and requires more thrust and momentum. The flotation needs of most skiers are met by lightweight skis. The deep powder (Rocky Mountain) skier will require a traditional touring ski, as will a backpack skier.

There are other considerations besides flotation. The lightweight skis are narrower, of course, and in deep snow they will rock a bit more than say the traditional touring ski. Thus, the backpacker, whose balance is already upset by a heavy pack, may well find that the wider

stable platform. The wider ski is also of use for the unathletic beginner with weak ankles.

### Ski length.

The cambering and flex pattern of a good touring ski of a particular length is carefully matched to the average weight of the skier who should use that length of ski. This design is based on the rule that an individual of average weight for his height, should use a ski 30cm (one foot) taller than he is.

### Boots.

Boots come in three general styles; mountain touring, which are heavy, often double-laced boots requiring a cable binding; touring, which are ankle-height, lightweight, and can be used with cable binding or toe binding; and lightweight touring, below-the-ankle boots for use with toe bindings only.

### Bindings.

Nordic touring technique requires that the heel be free to lift off the ski with maximum freedom of foot movement and yet enough control. This flexible connection between ski and feet makes Nordic skiing inherently safer than Alpine skiing.

### Poles.

Nordic poles should be springy to give a bit of a whip which helps push the skier forward. These poles are generally made of bamboo or special fiberglass. The correct length pole should come up to the armpit of the skier.

The best way to find out about Nordic ski touring is to visit a ski shop, chat with the dealer, get a book or two on the subject, and talk to people who have experience in the sport. A whole new sport is open to the adventurous winter sportsman - just over the slope.



# 8

# ski trips

## aspen

DECEMBER 26—JANUARY 1

## vail

JANUARY 17-21

## aspen

JANUARY 26—FEBRUARY 3

## steamboat

FEBRUARY 15—19

## zermatt

FEBRUARY 23—MARCH 4

## jackson hole

MARCH 17—24

## park city

MARCH 31—APRIL 7

## easter

APRIL 19—22

## Steamboat

The George Washington Holiday  
Special . . . .

**STEAMBOAT!!!**

Thursday, February 15 to Monday, February 19. Thirty-nine runs and some of the finest "Champagne Powder" in North America are all accessible with a quick ride on any of the lifts, pomas, or the gondola. Cross-country skiing, non-existent lift lines, the GLM method for beginners are all here, and Howelsen Hill provides another aspect of Steamboat's multifaceted skiers' paradise - night skiing.

One bedroom, two bath condominium units with fireplace and kitchen facilities at Storm Meadows is our base of operations for 3-1/2 days. A new athletic club has just opened; and for a nominal fee, a huge all-season swimming pool, saunas, steam rooms, and a therapy pool for those screaming muscles are available.

Marvelous restaurants, super bars, and neat little shops are at Steamboat. This is one ski experience you can't miss - so get your ticket for the George Washington Special - \$165.00 - which includes air and bus transportation, lodging, cocktail and wine and cheese parties. Only \$50 is required to hold your place on this trip.

**February 15-19            \$165.00**

Trip Chairman:

Bernie Klemm

1500 Strawberry, Apt. 101

Pasadena, Texas 77502

Hm.: 477-8037 / Off.: 479-2311

Assistant Trip Chairman:

Lynn Blanton

Hm.: 465-0834



**Drop out of the routine!**

Join the "January Drop Outs."

They know January is the best time of the year to ski Vail. **Drop** into clean air . . . wide open manicured trails. **Drop** into soft snow with the Rocky Mountain sun shining overhead. Ski more miles each day; you'll share the mountain with fewer people. Get tanned, healthy and happy.

We'll depart Houston January 17th, via Continental Airlines at 7:15 p.m. and arrive by bus at the Mt. Haus Condominiums around midnight. We'll have 3-1/2 days of powder skiing, wine and cheese parties under a full moon.

NASTAR races will be held January 18th. Remember this is a handicap race with separate races for women and men and different races for all age groups. NASTAR is for the beginners as well as the expert skiers.

Reluctantly, we will depart Sunday afternoon at 3:00 p.m. to take an early evening Continental flight out of Denver arriving Houston at 10:05 p.m. Final payment of \$120.00 is due at the December 11th meeting.

For further information, please contact:

**January 17-21            \$170.00**

Trip Chairman:

Jerry Kearby

9330 So. Main, Ho. 77025

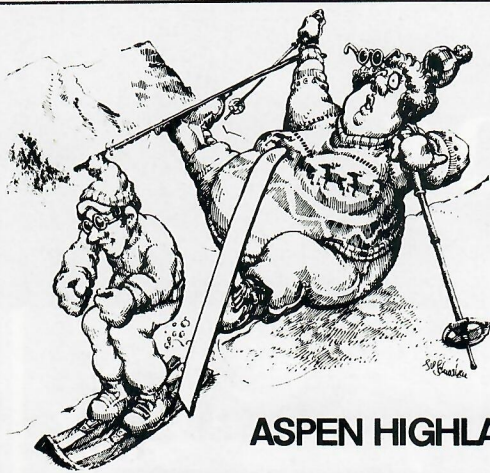
Hm.: 666-4476 / Off: 665-0362

Assistant Trip Chairman:

Laura Callihan

Hm.: 461-0873





The finest ski school in Aspen features the Clif Taylor GLM technique (he's the man who invented it) plus traditional length ski instruction.

11 lifts. Fun NASTAR races. The Highlands isn't quite like any mountain you've ever skied before.

*GLM means never having to say you're sorry.*

## ASPEN HIGHLANDS/THE OTHER ASPEN

## JACKSON HOLE

**HURRY! HURRY! HURRY!** Don't miss the greatest snow on earth. It's still over three months away, but very few spaces are left. Send your deposit now to avoid a possible waiting list.

Departure is from Houston Intercontinental Airport at 8:15 a.m. on Saturday, March 17, arriving at the Jackson Hole airport at 12:24 p.m. A short bus ride will take us to Teton Village in time for an afternoon of skiing, unpacking or resting up for an evening outing. Current arrangements are for departure from the Jackson Hole airport at 1:00 p.m. Saturday, March 24, arriving home early that evening. Efforts are now underway to arrange for a charter flight between Denver and Jackson Hole which would allow a later departure, thus giving us a full seven plus days of skiing, touring Yellowstone Park, or whatever other winter activities you may enjoy. Jackson Hole offers the greatest experience in skiing and seeing enjoyment available in the USA. Unlimited unpacked powder provides challenging conditions for the expert skier and an opportunity for the intermediate skier to become more proficient in thrilling snow conditions not available at most ski areas. The beginners are provided an entire mountain of well packed and maintained gentle slopes. The GLM (graduated length method) of ski instruction is available and recommended by the ski school for beginning skiers.

Teton Village is located at the base of the Jackson Hole Ski complex in the shadow of the Grand Teton. It is a self-sufficient village with restaurants and lounges, several of which offer nightly entertainment. Several evening trips are planned to Jackson Hole, which is only 12 miles from Teton Village, for a greater variety of evening fun. Yellowstone National Park is located just 30 miles away. Snow mobile tours provide an opportunity to enjoy the breath-taking scenery.

Space City Ski Club provides the rest: PEOPLE! These people enjoy skiing and being with other people who enjoy living. Put it all together, and you have the greatest snow on earth for just \$265.00. This price includes transportation, lodging in beautiful new condominiums with fireplaces, and several parties. Send your deposit of \$50 while there is still room. For further details, come by the trip table.

**March 17-25                      \$265.00**

Trip Chairman:

Harry Gaston  
10150 Eddystone Dr. (77043)  
Hm.: 468-7414 / Off.: 228-8711

Assistant Trip Chairman:

Jeanne Bridgman  
Hm.: 465-5400 / Off.: 928-5551

### PUBLISHER LOSES MALE ANIMAL . . . .

Whiskered Terrier Face Honey Colored Dachshund Body, wearing tags, named "Sin Cin". Vicinity San Felipe and Mid-Lane on November 10. Merry Merritt, off.: 621-2646, home 626-1881.



A plane load of ninety-nine skiers is ready and eager to take off for the holiday season in Aspen. We have a short waiting list, but cancellations may enable you to get on the trip. If you are interested in this trip, send your deposit to Jim Sirois, Trip Chairman.

Those of you who are on the trip should have received a notice of the December 5th pre-trip party. Also included was a schedule of events for the entire trip. This is the only copy of the schedule you will get - so be sure to keep it and also to bring it on the trip. Anyone interested in the lift ticket package at the Highlands which is \$21 for three days of skiing, send the money to the Trip Chairman before December 10th.

**Everyone on the trip should be at Houston Intercontinental Airport, the Texas International Counter, at 4:30 P.M. Tuesday, December 26, 1972.** You will be checked in by either the trip chairman or assistant and will receive your ticket at that time. The charter flight will depart promptly at 5:30 p.m.

We have made preliminary plans for the New Year's Eve party at Aspen Highlands. Other events we have scheduled, include a couple of wine and cheese parties after days of skiing and an Obstacle Race on Saturday afternoon at Aspen Highlands. We will bring in the New Year with fun loving skiers and newly found friends.

**December 26-January 1    \$245.00  
(Transportation only)    \$130.00**

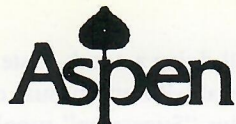
Trip Chairman:

Jim Sirois  
4147 Amherst, Ho. 77005  
Hm.: 666-5348 / Off.: 524-6351

Assistant Trip Chairman:

Barbara Wallace  
Hm.: 334-3283 / Off.: 333-3300





The traditional Aspen trip is ready to go! Our pre-trip party is planned for January 4th at 7:30 p.m. It will be held in the Clubroom of the Forest Creek Apts., 10010 Memorial. This will be a get acquainted party to meet the people on the trip and sign for roommates.

If you are planning to rent equipment, let Chris or me know at the next meeting. You can rent from two places here in Houston or make arrangements in Aspen.

Our departure will be Friday, January 26th at 7:30 p.m. Be at the airport by 6:30 p.m. We will depart Aspen at 5:00 p.m. Saturday, February 3rd.

Remember, final payment is due on December 11th. We have 80 people on the waiting list so in order to keep your spot on the trip, be sure to have your final payment in by that time.

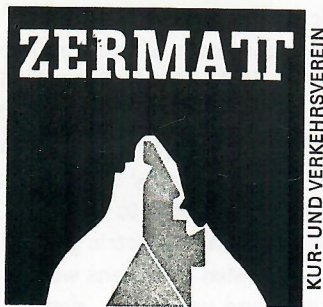
**January 26-February 4**      **\$195.00**  
**(Lodging only)**              **\$ 90.00**  
**(Transportation only)**      **\$105.00**

**Trip Chairman:**

Kay Newels, 4444 Westheimer, No. 647  
Hm.: 621-0617 / Off.: 521-4012

**Assistant Trip Chairman:**

Chris Read: Hm.: 333-2218/Off. 471-2771



Eighty three lucky Space City members are now guaranteed a place on our biggest-and-best-yet European ski jaunt. The waiting list is short and if demand warrants it, we will try to "borrow back" some of the charter spaces allocated to Austin and Dallas ski clubs. So, if you have a desire to escape to the Old World charm of Zermatt for ten days in '73, contact us immediately.

Zermatt is unique among Alpine ski resorts since it offers the best of all possible worlds. Endless miles of beautiful runs in the shadow of the Matterhorn to satisfy beginners, intermediates and Killy-style skiers, serviced by a dizzying array of lifts (arranged in three lift complexes) within easy distance of your hotel. Apres ski activity is varied and exciting and the excellent restaurants warranted a cover story in GOURMET magazine.

We depart Houston on Friday evening, February 23 via a World Airways charter directly to Geneva and continue to Zermatt Saturday by motor coach and train. Departure from Zermatt is Saturday morning, March 3, and after a delightful day and night in Geneva, we arrive in Houston on Sunday evening, March 4. Lodging in Zermatt and Geneva is two-to-a-room with bath or shower and a continental breakfast in Zermatt. All of this and more is yours for only \$393. A deposit of \$50 is due now with the balance to be paid by December 18. A "transportation only" option is available for only \$253 which includes the charter flight from Houston to Geneva and the last night's lodging in Geneva.

You can't afford to miss this skiing experience of a lifetime!

**February 23-March 4**      **\$393.00**  
**(Transportation only)**      **\$253.00**

**Trip Chairman:**

Jerry Maley  
1525 Garrettson, Apt. 35, Ho. 77027  
Hm.: 622-1243 / Off.: 521-4020

**Assistant Trip Chairman:**

Madeleine Schlemmer  
Hm.: 622-7300

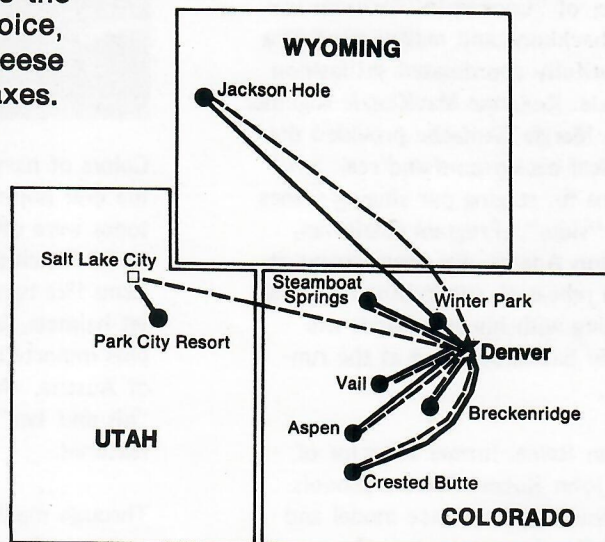
# Ski Braniff to snow country

Spend a fun-packed 4-day, 4-night ski weekend, Braniff Style, for as little as \$89.00 per person, plus air fare. Package is based on double-room occupancy. Your unforgettable ski holiday includes first class accommodations, motorcoach

transfers from Denver to the ski resort of your choice, a special wine and cheese party, and all tips and taxes. Lots of other Braniff Style ski packages are also available. For more information, including a colorful brochure, call 621-3111.



- Ski resorts
- ★ Gateway cities served by Braniff International
- Surface transportation
- - - Connecting air line service



## You'll like skiing Braniff Style.



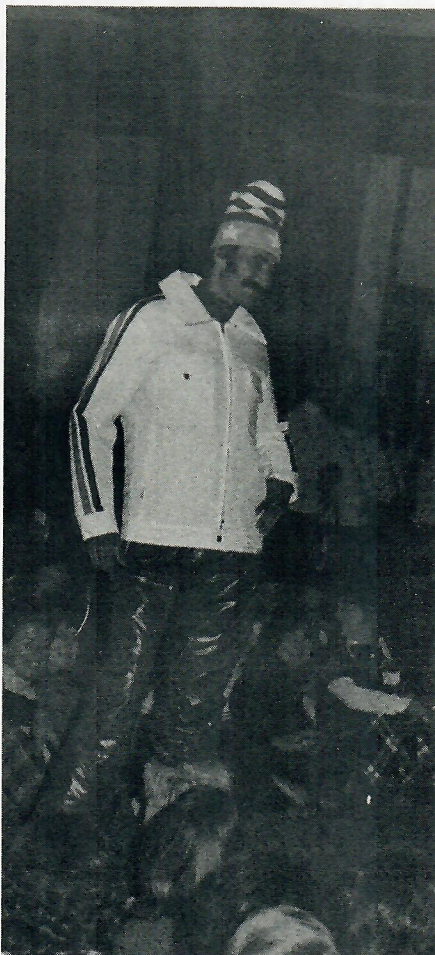


## ANNUAL FASHION SHOW . . . ANOTHER "HIT" ON OUR HANDS!

Each year, our Space City Ski Club annual fashion shows have seemed to get better and better . . . and this year has to be the best yet. Ruth Roy, owner, manager, and buyer of "Locked In" fashions was the backbone and master-mind of a beautifully coordinated ski fashion parade. Roxanne MacKenzie together with Margie Gamache provided the musical background and real "pro" brains for staging our singing scenes and "skits". Program Chairman, Winton Adams, was ever-present at each rehearsal, supervising his show, making with his own hands the lovely backdrops used at the runway.

Joann Reine, former Director of the John Robert Powers Schools in Houston, free lance model and modeling instructor, was the Fashion Commentator. Ski fashions ranged from the classic

basic style of the smooth fitting parka right down to the slim line of the traditional ski pants. Variations offered were "slicks", elasticized smocking, and fur trims. Colors were offered in every shade of the rainbow from pinks to lavenders right on down to electric greens and reds. Men's fashions were standard and unique . . . depending on each individual's taste. Arrows were quite prominent this year as well as the nautical influence in both mens and womens fashions.



Colors of navy with burgundy plus the ever popular field of brown tones were offered for men. Additional "exclusive" touches were items like hand sewn suede caps, jet helmets, fur boots and hats plus imported items from Anba of Austria. Artistically matched "his and her" fashions were also featured.

Through much planning (and maybe not enough rehearsal time admitted by the performers) five skits were offered. Skits ranged from a sweet

baby-doll doing a tooth paste commercial with an unusual ending, poets, plus "Superman" running down the runway proclaiming "Super Skinny Sleuth of the Ski Slopes" letting you know that there is always a good guy out there in a red cape ever-ready to assist any skier in trouble, in the snow, that is. Seems Superman has an exclusive contract with Colorado now.

Response and compliments were flowing heavily after the show reflecting once again, that when Space City decides to put on a fashion show . . . it's always a HIT. It's amazing how word has traveled and sometimes . . . we must have more guests and snoopers from other ski clubs than members. Guess they just want to learn "HOW" to put on a winner. Warm appreciation to Ruth Roy and everyone else that helped to make our show so much fun and the focal point of our November meeting.

See you next year!







**Jerry Chiles,**  
President,  
Texas Ski Council  
Board of Directors,  
RMD

We were pleased to have as our guest at the last ski club meeting a very distinguished visitor from Colorado, Mr. Bill Abraham, the Executive Director of the Rocky Mountain Division of the United States Ski Association. Bill was very kind to make the trip all the way down from Denver just to meet with us in order to discuss the RMD and to get to know us and our club a little better.

Having been intimately involved with the sport of skiing for some twenty-five years, Bill is extremely well qualified for his present position with the RMD. Prior to his current job, Bill served in the Army for twenty years where he taught skiing in Europe, and also served for two years as Manager of the Buttermilk Ski Area for the Aspen Resort Association. He is now beginning his third year as Director of the Rocky Mountain Division and is doing an excellent job of getting the division re-organized so that it is more responsive to the needs of skiers such as us.

As part of his visit with us Monday night, Bill pointed out some of the benefits gained by becoming a member of the Rocky Mountain Division of the United States Ski Association. Most important, of course, is the coupon good for a \$5 discount on a lift ticket purchased at any of the major ski areas in Colorado. The coupon may be redeemed any day of the week at any time other than the three major holiday periods of Thanksgiving, Christmas, and Easter. Bill pointed out that once you have used your coupon, you have, in effect, gotten back your \$5 dues and all the other benefits are then free.

Bill also showed us the new "Skier Stop" booklets which contain discounts ranging from a free drink or a free meal at ski area restaurants, to 20% discounts at ski shops and lodges. There are 110 establishments such as restaurants, ski shops, lodges,

liquor stores, gas stations, etc. located all over Colorado and elsewhere participating in the program. If you use only one of these discounts and your \$5 lift coupon, you have "made money" on your \$5 membership fee. Other benefits include discounts on "Ski" and "Skiing" magazines, inexpensive ski theft insurance and other types of group insurance, free subscription to the "Rocky Mountain Skier" and "Ski America" magazines, opportunity to purchase at a discount numerous other items offered, and support of the United States Ski Team. Particularly those of you going on the club's early trips to Breckenridge, Aspen, and Vail will want to join right away so you will be sure to get your discount coupons before your trip. Bill told me that he was very impressed with our club and our members. He said he had very seldom seen such a good looking group of young people who really looked like skiers. He must have been looking at our style show models!! Anyway, he wanted me to extend an invitation to each of you to come by and see him when you are in Denver, and he will do his best to help you in any way he can. The Rocky Mountain Division office is located at 1463 Larimer Square, Denver, Colorado 80202, telephone (303) 222-5941.

In the meantime, for those of you who would like to join the RMD, memberships will be sold at each ski meeting, at the pre-trip parties for each of the ski trips, or you may call the club secretary, Jane Morgan, 664-5028, and she will mail you an application.

## ski tips

By Ed Williams

Certified Instructor RMSIA and PSIA

What is the American Teaching Method (ATM)? First it is the only teaching method approved by the Professional Ski Instructors of America. In basic concept and approach the method is similar to many of the great schools in Europe: the independent leg action of the modern German approach, anticipation from Italy, and the "hockey stops" of Joubert. It is similar in many respects to the official French system, and certain aspects of the Austrian teaching approaches.

While it uses a GLM approach, it is not a GLM method. ATM emphasizes short skis as an aid to learning, but so does GLM. What is the difference you ask? The difference is in basic: GLM is a direct parallel approach, while ATM emphasizes stability, control and maneuverability. As the technique is mastered, the skis ride closer together giving a "parallel" appearance. Should a better skier use a shorter ski? If it feels good and you have fun, why not? But you sacrifice stability when you do. If you are becoming a better skier and have the muscle power, by all means use the correct ski length.

The PSIA technical committee has spent many hours studying the best approach to teaching. They are not concerned with promoting ski equipment or gimmicks to help the ski areas. They are interested in one thing: the best way to teach people how to ski. ATM is the best approach.

### we've gone cross country

We now stock X-C skis & accessories. Plus, ski packs, parkas, knickers, sweaters & lightweight camping gear. Come see us. You'll really be snowed.

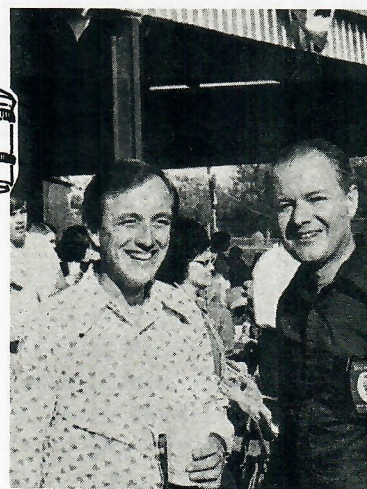
#### Wilderness Equipment Inc.

591 Town & Country Village (Mall of Fountains) Houston 77024  
638 Westbury Square / Houston, Texas 77035 / (713) 721-1530





# NEW BRAUNFELS WILLKOMMEN ZUM WURST FEST



Thirty-eight Wursthers plus one bus driver attended the Third Annual New Braunfels Wursthersfest, Saturday, November 4th. Due to a late get away accompanied with a group spirit to hit town in the proper frame of mind, an intermediate stop at Columbus Texas was necessary to resupply the on-board necessities. This was conducted in the true SCSC fashion . . . abandon. When the no-snow skiers hit town, they immediately swaggered (skiers' definition: Swagger is to walking as vedel is to skiing) to the nearest wurst stand and started to sample the food.

The remainder of the afternoon was spent in eating, drinking, visiting art shows, drinking, watching a dog show,

drinking, eating, dancing in the Wurst Hall, drinking, boating, drinking, sleeping on the golf course (away from the dog show area) and further drinking. As the day progressed, the crowds increased, making it even more difficult to move around. That evening, everyone formed up at the bus (less one) and proceeded to the Bavarian Village for supper. The meal included 13 inch long hard boiled chicken eggs (believe it or not) 6 foot long cold cut sandwiches and more beer (believe it or not). Following some post supper dancing, the group made its way back to the bus and headed for Houston (less one). Needless to say, everyone slept. A good time was had by all!

ing about the one less person, we came home with, here's the story, the nameless soul (Charles Dutton) somehow missed the group in all the merriment but made his way to Austin and took up Saturday night residence in the airport terminal. The local police were not too happy with this arrangement and questioned him several times. When morning broke, Charles hopped his plane and directed it to fly to Houston. Unbeknownst to him throughout this whole affair, the Comal County Sheriff's Department was contacted by phone and a one minute search of the jail was conducted to find our missing Wursthers, with no success.

Post Script: Just in case you're wonder-

by Lee Wible





# off the slopes

by  
Tess  
Gillespie



SKI POWER . . . Classic is the look in ski fashions and Ruth Roy's Locked In Sports had great ski wear at the November meeting style show that had me wanting to schuss all the way to Aspen. A big crowd for the November meeting saw Charles Dutton steal the style show in his Stone-Ulindspitz-Space Blanket (it looks a lot better than it sounds), Jay Castille was doing jet turns on the runway in his "Outer Limits" outfit. All the models did look great and really put everyone in the mood to get to ski country - pronto!

Our December meeting will have none other than Stein Erickson, two time Olympic Gold Metal Winner. Stein, Director of Skiing at Park City, will present a special program on the glories of skiing Utah. Don't miss this meeting . . . even if you don't ski.

For those of you that heard Bill Abraham (President Rocky Mt. Division U. S. Ski Association) speak at the November meeting, I'm sure you're convinced what a great group this is. Besides the extra benefits you get by being a member of this group; such as discounts on ski lift tickets, you are doing something that promotes and benefits the whole sport of skiing. The membership price is very reasonable (\$5.00) so why don't you get involved?

LOCAL SCENE . . . Black Tie Affairs . . . Cadre Club had a very impressive formal dinner at Tony's. Spotted enjoying the cuisine were Jim and Camille Bigham, Judy & Harry Bristol, Jerry Chiles and Sally Riggs, Ron and Halene Crossman, Ron's sister Jaye Crossman and Jay Castille, Dick Tensley, Ray Lawrence, Jerry Maley, Miles Anderson, Haus Vineyard, and their dates and many others.

SITZ-TIDBITS . . . If you want to join

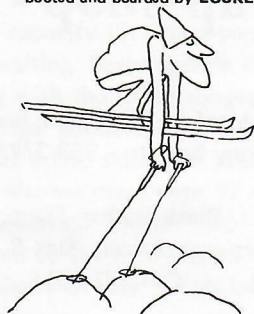
a bicycle group and get in shape for the slopes, give Gene Holland a call at 667-0190. . . Don Martin won some, got some, and lost some in Las Vegas - he's back and planning twelve weeks of skiing this season -- must have won a lot . . . David and Susan McCotter Ramsey finally got away for their honeymoon in San Francisco. Doug and Penny Allen just returned from SFO - plus stops in Carmel and Los Angeles checking out speed boats. . . Tacy Bowman-Paul Maguire is back from honeymooning in Hawaii is off again - this time to Paris - not with her hubby but her daughter.

If you are planning to go on the Europe ski trip, or just to Europe - new SCSC member Ginny Wilson teaches French at the L'Alliance Franchise of Houston and that should really come in handy. Call her there for some French lessons.

Good luck to everyone going to the slopes Thanksgiving. I'll be having my turkey at Hilton Head Island, South Carolina probably wishing I were leaving Sitzmarkes in Vail instead.

## THE MOGUL HOPPER

He flies through the air with the greatest of ease,  
the finest of gear, the greatest of skiis,  
He's the daring young man dressed,  
booted and boarded by LOCKED IN.



### SKIS

Rossignol  
Olin  
Blizzard  
Kneissl  
Nor Sprint-X Country

### BINDINGS

Look Nevada T/  
Grand Prix  
Geze  
Cober  
Spademan  
Salomon  
Rottefella -X Country

### BOOTS

Trappeur  
San Marco  
Nordica  
Dunham-Apres' Ski  
Rin Dal-X Country

### GOGGLES

Bausch & Lomb  
Trappe of Aspen  
Carrera

### POLES

Barre Crafters  
Cober

FASHIONS - Anba-Aspen

## Locked In SPORTS

9703 Katy Freeway • 464-2873

EQUIPMENT RENTAL, SALES & SERVICE

Just for you, a Wine and Cheese Party

7:00 - 9:00 P.M.

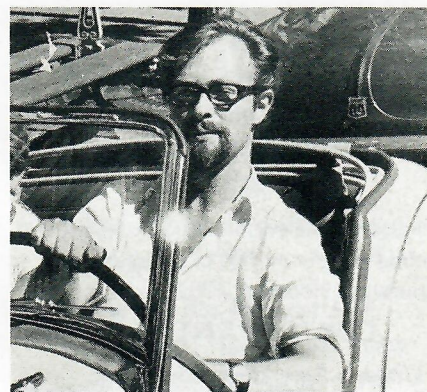
Each Thursday during December

# marke makers

by Jean Ubico

Canadian John Potter once enjoyed a vacation to Paris so much that he enrolled at the Sorbonne and stayed seven years to complete a doctorate in physics. His subsequent studies in planetary atmospheric physics have established him as an international expert in the field.

John eventually left Paris for New York to do postdoctoral research at the National Academy of Sciences and teach a course at City College. He adapted the life style of Greenwich Village as he had that of the Left Bank French student.



"The scientist is an intellectual like an artist or a writer; he spends his life creating, living the Bohemian life, often neglectful of details for his work."

He developed a special expertise in the mysterious cloud shrouded atmosphere of the planet Venus. With the increased emphasis of the Space Program on ecology, John in his present assignment applies the laws of atmosphere to the planet Earth.

As a physicist for Lockheed, he corrects the obscuring effects of the atmosphere on photographic and numeric data transmitted via an earth orbiting satellite. The resulting information has practical application to such ecological problems as optimum land usage and crop blights.

After working hours John switches on to Johann Bach and expounds on his theories of the Liberated Woman. He has also captained his sailboat to numerous victories in local races.



# sitzmarke

What does the **sitzmarke** mean to you? . . . a contest for the best among us!

Tell us what "Sitzmarke" means to you in 100 words or less by cartoon or "purple prose" and we will award you a gift certificate.

**First Prize** (\$25.00) The funniest Sitzmarke experience (or I planted the pole backwards)

**Second Prize** (\$15.00) What Space City Ski Club means to you (fun, friends, love-ins?)

**Third Prize** (\$10.00) Apres ski? (or four years later I left my Sitzmarke in Aspen, Europe, Peru, Sugar-bush)

Mail your entires to the Stizmarke Publisher, Merry Merritt, No. 9 Briarway, Houston 77027

## CONTEST ENTRY

### Under a Spreading Aspen Tree

by John H. Boynton

Under a spreading Aspen tree

A spaced-out skier lay

Just why he'd used this tree to stop

No one can rightly say.

He'd gone to school and learned to turn

The snowplow was his trick

But schussing down the slopes this day

The trees got mighty thick.

It seems he chose to learn, I fear

By graduated length

His skis got longer, year-by-year

And sapped his waning strength.

Since no one knew his master plan

No one could say he's wrong

So now he plows through thick and thin

On skis just twelve feet long!

You're Invited to a Champagne

### AUTOGRAPH PARTY

Honoring John Boynton's new books  
**LOVE IS RADIANT, LOVE IS TOUCHING**

At DALTON BOOKS,  
Northwest Mall, Dec. 12th, 7-10 P.M.

*An autographed poetry book may be the most personal gift you'll give this Xmas*

**HANSON**  
dynastar



Edelweiss

**KNEISSL**

**Bogner**



**J. RICE SPORTS Ltd.**

2367 RICE BLVD. — 529-8767

1340 GALLERIA — 626-3650

## "swap shop"

**WANTED:** Men's skis, 105cm; boots 10½-11. Tony Segreto - 333-2795.

**FOR SALE:** Black leather Trapper Boots. Worn one season. Size 8, Mens - \$30. Call 771-6015

Nordica Buckle Ski Boots, used five times, Men's, Size 10, New \$100.00, Now \$25. Call Jim Porter, 464-1182.

A Ski Equipment Swap Shop Classified Section is published in the Sitzmarke each month as an additional service to Space City Ski Club members. Ads are accepted from **members only** for ski clothes and ski equipment. Rates are ten cents a word, addresses and telephone numbers are considered as one word each. Ads must be called in by the 10th day of each month for publication in the next month's issue. To place your ad in the Sitzmarke, call Janet Pickell at 723-4992.



**Hello Skiers:**

Come on over to Sonja and Herman apres Ski Chalet . . . Dance to the latest echo of the Matterhorn.

**Swiss Chalet**  
**Restaurant**

511 South Post Oak Lane, Off Woodway

Phone: 621-3333

## WHAT EVERY GOOD SKIER SHOULD KNOW ABOUT SKIING

**Avalanche** — the Friday night arrival of the weekend ski crowd.

**Beginners Hill** — the one nearest the first aid station. It's usually covered with ice and people doing the splits.

**Gelandesprung** — a mid-hill collision with your Austrian ski instructor.

**Goggles** — what a boy skier does when he sees a girl skier in cranberry colored stretch pants.

**T-bar** — the beverage counter in a chalet with no liquor license.

**"Track"** — what a skier yells when he runs you down from behind.

**Schuss** — the sound of pine branches swatting your face as you go off the trail at 45 m.p.h.

**Ski Poles** — the winter fun crowd from Warsaw.

**SLALOM** — an old Hebrew greeting that means "get down off that hill before you break your neck."





13





## SPACE CITY SKI CLUB

P. O. Box 22567

Houston, Texas 77027

DATED MATTER

# sitzmarke

## december 1972

### about houston

december

by Janet Pickell

december

sunday	monday	tuesday	wednesday	thursday	friday	saturday
<b>DECEMBER 1972 - JANUARY 1973</b> <b>KEY TO ABBREVIATIONS:</b> AT - Alley Theatre CAM - Contemporary Arts Museum COL - Sam Houston Coliseum DG - Dean Goss' Dinner Theatre HMT - Houston Music Theatre HP - Hofheinz Pavilion MFA - Museum of Fine Arts MH - Music Hall WDT - Windmill Dinner Theatre					<b>SCSC Breckenridge Ski Trip</b> Ho. Rockets v. Portland HP, 8:00 Sweet Charity, Juliet Prowse, HMT, thru Dec. 10 Butterflies Are Free, WDT, Thru Dec. 15 Happy Birthday, Wanda June, AT, Arena Stage, th. Dec. 31	<b>SCSC Breckenridge Ski Trip</b> Christmas Reflections, Tree Exhibition, MFA, th. Dec. 30 U of H v. Xavier, Basketball, HP, 8:00 Life With Father, AT, th. 1/7 Come Blow Your Horn, DG, thru Dec. 10 Richie Havens, Cnct. Astrohall
<b>SCSC Breckenridge Ski Trip</b> Oilers v. Pittsburgh, Astrodome, 1:00 Toy Show, Exhibition, CAM thru Dec. 31 Masterpieces of Five Centuries, Collages of Robert Motherwell, MFA	<b>SCSC MONTHLY MEETING</b> <b>Look's Sir Loin Inn 7:30</b> Houston Symphony, Jones Hall, 8:30 Contemporary Internat'l Surrealists, Kiko Galleries 419 Lovett, thru Dec. 31	Houston Aeros v. Alberta, COL, 7:30 Houston Symphony, Jones Hall, 8:30 Scrooge, The Stingiest Man in Town, Theatre Under the Stars, MH, thru Dec. 17 A Funny Thing Happened On the Way to the Forum opens DG	Houston Aeros v. Alberta COL, 7:30 Christmas Show, Robinson Galleries, 3220 Louisiana thru Dec. 24 Christmas Candlelight Tours Sam Houston Historical Park, 1100 Bagby, 7:00	Contemporary Japanese Prints, Marjorie Kauffman Graphics, Level 3, The Galleria, thru Jan. 15 Christmas Candlelight Tours Sam Houston Historical Park, 7:00	Ima Hogg Birthday Concert Houston Symphony with Arthur Rubenstein, Jones Hall, 8:30 Christmas Candlelight Tours Sam Houston Historical Park, 7:00	U of H v. California, Basketball, HP, 8:00 Former Rice Students Exhibit, Sewall Art Gallery, Rice University, thru Dec. 31
Oilers v. Cincinnati, Astrodome, 1:00 Houston Symphony Jones Hall, 2:30 Houston Youth Symphony Ho. Garden Center, Hermann Park, 3:00 Houston Aeros v. Los Angeles, COL., 7:30	Houston Symphony Jones Hall, 8:30	Houston Symphony, Jones Hall, 8:30 Houston Aeros v. Los Angeles, COL, 7:30	Karen Nelson Show - oils, tapestries, sculpture, Hooks-Epstein Galleries, 1200 Bissonnet thru Jan 10	Surrealist Graphics, Millieud Gallery, Lamar Tower, West Alabama at Buffalo Speedway, thru Jan. 14	Houston Symphony, Christmas Concert, Jones Hall, 8:00 Houston Rockets v. Philadelphia, HP, 8:00	Houston Aeros v. Philadelphia, COL, 7:30
24	25 CHRISTMAS	SCSC ASPEN TRIP Houston Rockets v. Phoenix HP, 8:00	SCSC ASPEN TRIP Houston Rockets vs. Los Angeles, HP, 8:00	SCSC ASPEN TRIP	SCSC ASPEN TRIP Houston Rockets v. Milwaukee, HP, 8:00 The Nutcracker, presented by Houston Ballet, Jones Hall, 8:30	SCSC ASPEN TRIP The Nutcracker, Houston Ballet, Jones Hall, 8:30 ASTRO BLUEBONNET BOWL GAME - L.S.U. v. Tennessee - Astrodome
SCSC ASPEN TRIP Houston Symphony New Year's Eve Gala, Arthur Fiedler, Jones Hall, 8:00	SCSC ASPEN TRIP NEW YEAR'S DAY	Houston Rockets v. Boston, HP, 8:00 The Only Game in Town, with James Drury, opens WDT, thru Feb. 4	Houston Rockets v. Boston, HP, 8:00	4	Bluebonnet Basketball Tournament, HP, Games at 7:00 and 9:00	Bluebonnet Basketball Tournament, HP, Games at 7:00 and 9:00

**NOTES:** WDT, all plays, performances daily except Monday, buffet begins 6:45 p.m., curtain 8:30, Sunday buffet begins 12:30 and 6:45, curtain 2:00 and 8:30, Funny Girl, Little Me and Sweet Charity, HMT, performances Tuesday-Friday 8:00, Saturday 7:00 and 10:00, Sunday 2:00 and 7:00. AT, all productions, opening Thursday 8:00, Tuesday-Friday 8:30, Saturday 5:00 and 9:00, Sunday 2:30 and 7:30. The Man In The Dog Suit, SWTG, 2419 Times Blvd., thru December 2, performances Friday and Saturdays at 8:30. Films, Rice University Media Center Auditorium, showings every Friday and Saturday at 8:00 thru December 2. The Little Murders, TS, 1410 W. 43rd St., performances Fridays and Saturdays at 8:30. Masterpieces of Five Centuries, MFA, continuing for one year, in Sterling Galleries; Collages of Robert Motherwell, MFA, thru January 14, in Masterson Gallery. DG, all productions, performances daily except Monday, Buffet 6:30, curtain 8:30. Dallas-Fort Worth - Houston Invitational Exhibit, CAM, works by artists residing in the three cities, in lower gallery, no closing set; The Killing of Sister George, CP, Town & Country Village, performances Fridays and Saturdays, 8:30, Sundays 7:30.





# JOIN THE RMD

## IT'S FREE

(when you ski one day at any of 35 major areas)  
(christmas week excluded)

## GET MORE FOR YOUR SKIING DOLLAR

(by using the "skier stop" coupons received with membership)\*

## SUPPORT THE UNITED STATES SKI ASSOCIATION

(the u.s.s.a. has done more for skiers & skiing than any other group)

## RECEIVE SKIING MAGAZINES FREE

("rocky mountain skier" & "ski america")

## OBTAIN LODGING DISCOUNTS

(available at 45 lodges thruout the rocky mountain area)

RETURN WITH CHECK FOR \$ 5.00 TO:  
SPACE CITY SKI CLUB  
BOX 22567 HOUSTON, TX. 77027

### APPLICATION FOR MEMBERSHIP

ZIP CODE \_\_\_\_\_ FIRST NAME \_\_\_\_\_ MIDDLE NAME \_\_\_\_\_ LAST NAME \_\_\_\_\_  
ADDRESS \_\_\_\_\_ APT # \_\_\_\_\_  
CITY \_\_\_\_\_ STATE \_\_\_\_\_  
(please print or type)

### MEMBERSHIP TYPES

☒ INDEPENDENT CLUB

☐ LIFETIME  
☐ 5 YEAR  
☐ 3 YEAR  
☒ 1 YEAR

PLEASE SEND ME FREE  
SKI TOURING INFORMATION

yes no  
☐ ☐

SEX M F  
☐ ☐

MARRIED yes no  
☐ ☐

RMD  
USE


DATE OF BIRTH

--	--	--	--

M	D	Y	

yes no  
☐ ☐ ARE YOU A  
HEAD OF HOUSEHOLD?

☐ ☐ IS SPOUSE  
AN RMD MEMBER?

☐ ☐ ARE YOU  
A STUDENT?

\* typical coupons available  
on space city trips :

### ASPEN:

15 % off on ski rental or repair  
20 % off on ski rental over 3 days  
10 % off on food & liquors  
free desert with dinner  
1/2 off on cross-country ski lesson  
1/2 off on cross-country ski eqpt.

### STEAMBOAT SPRINGS:

free glass of wine with dinner  
50¢ per day off on ski eqpt. rental

### VAIL:

free drink with dinner