

# THE SITZMARKE

SPACE CITY SKI CLUB

HOUSTON, TEXAS

VOLUME 4

September 1971

Number 5

## REGULAR MONTHLY MEETING

Monday 7:30 PM

September 13, 1971

Look's Sir-Loin Inn

"Crown Room"

(Corner of the South Loop West and South Main)

Our first regular meeting of the 1971-1972 ski season will be an important meeting as all of the club sponsored trips will be explained and the opportunity to sign up for the trips will be extended. Many of the more popular trips are filled at this first meeting.

We will continue our informal seating arrangements as it has been most popular with the members. Dress is informal, ski clothes preferred.

A film, "Skiing in Colorado", will be shown. It will be a short movie so the meeting will not be too long. The film will feature Vail, Aspen, Steamboat Springs and other Colorado ski areas. Continental Airlines has produced the film.

Be sure and attend this important meeting. Invite a guest to come with you.

Ed Williams  
V.P.- Programs

## FROM THE HEAD OF THE LIFT LINE 1971-1972

Suddenly, it's September, and time to turn our thoughts from sunning, boating and sailing to football and .... SKIING! Before we do, however, I'd like to commend Programs V.P. Ed Williams for an excellent job of

organizing and directing our highly successful program of summer activities. Special thanks also goes to Merry Merritt, who was responsible for "Space City Ski Club's First Annual Beach Party and Luau" held August 28th at Galveston. It provided a perfect ending for a great summer, and proved to everyone that Space City's "Snow Bunnies" look even better in bikinis than they do in ski pants!

Now as we begin to "THINK SNOW" I'd like to remind everyone that our first regular meeting of the new ski season will be the first opportunity to sign up for all those fantastic trips being offered by the club this season! Be sure to attend to get all the trip details and make your reservations for your favorite trips. The October meeting may be too late!

A new ski club standing committee will be initiated at the September meeting. This will be the "Welcoming Committee", under Secretary Virginia Blalock. Its purpose will be to welcome new members and guests, help to acquaint them with our club and trips, and introduce them

around to some of the older members. Anyone wishing to volunteer to serve on this committee please contact Virginia.

And volunteers, don't forget our other standing committees: Public Relations and Publicity under P.R. Director Tanny Koepfel; Arrangements under V.P. Membership Joyce Testa; Education and Safety Committee and Bylaws Committee under the President, and the Special Events Committee under V.P. Programs Ed Williams. We need and welcome your participation; so do contact these officers and take an active part in your club by offering to serve on one of these committees.

See you at the September meeting!

Jerry Chiles  
President



1971-72 SCSC Executive Committee hard at work planning the years events are: (back row left to right) Pat McLaughlan (V.P.- Trips), Dan Sebesta (Treasurer), Joyce Testa (V.P.- Membership), Tanny Koepfel (P.R. Director), Jerry Chiles (President), front row Virginia Blalock (Secretary), Ed Williams (V.P.- Programs).



## SCSC TRIP CHAIRMAN FOR THE 1971-72 SEASON

(back row left to right):

Jim McIntyre (Tahoe), Jim Coyle (Steamboat Springs), Jim Grassman (Vail - Easter group B), second row left to right, Bill Russell (Aspen - Christmas), Duke Walker (Aspen - February), front row left to right, Tiny Aitken (Vail - Thanksgiving), Martha Sanford (Vail - Easter group A)  
 Not pictured: Ron Crossman (Europe) & John Gonnerman (Taos)

I FEEL A SKI TRIP  
COMING ON

Your trip chairmen have been ambitiously planning your trips and have assembled a selection which offer variety in location, cost and days of skiing. The SITZMARKE articles provide a description of each trip but since some plans are still being formulated there may be later adjustments in prices or trip details. Please contact the trip chairman or assistant for trip details.

Thanks to everyone who volunteered to serve as a trip chairman or assistant. Since these positions are limited by the number of trips we were not able to use everyone who volunteered but please do volunteer to assist your club in other ways this year. Contact your club officers to assist with the membership or drink tables, welcoming committee, style show, typing for SITZMARKE, selling advertising, etc.

There are several club policy items regarding the trips. Everyone must be a club member to participate; and remember one must be 21 or older to be a member. Its possible for a non-member to make a trip deposit but your '71-'72 dues must be paid immediately. In order to signup a \$50 deposit is required. The trip chairman will announce the final payment date for each trip. Your payment may not be refundable after the final payment date unless someone else takes your place. Lodge and airline group travel requirements usually require the club to make early payment and we're obligated to pay for unused rooms or seats.

Please check your accident and hospitalization insurance. Ski injuries have been known to happen so be protected. The club does not carry insurance.

YOUR NEW  
SKI SHOP**KNEISSL** ★

Kneissl skis and Geze bindings.

Rossignol Skis

Trappeur Boots

RUTH ROY, PROP

**"Locked On"****SPORTS**

9703 KATY FREEWAY

TOTAL SKI FASHION

**anba**  
of austria

SHOPPERS CHARGE BankAmericard

I encourage everyone to signup early; all of our trips are limited as to the number we can accommodate and for some trips the demand will far exceed the space available. Don't be disappointed -- signup early!

Pat McLaughlan  
V.P. - Trips

\* \* T H E S I T Z M A R K E \* \*

Published monthly by the  
Space City Ski Club  
Houston, Texas

SCSC  
1971-72  
OFFICERS

JERRY CHILES .....626-2697  
President  
PAT McLAUGHLAN .....649-6296  
V.P. - Trips  
ED WILLIAMS .....433-7359  
V. P. - Programs  
JOYCE TESTA .....626-2674  
V.P. - Membership  
DAN SEBESTA .....944-0873  
Treasurer  
VIRGINIA BLALOCK .....781-1778  
Secretary  
TANNY KOEPPPEL .....626-2081  
P.R. Director



## VAIL - THANKSGIVING

Our first trip to the snow this season will be to Vail during Thanksgiving.

We have a late afternoon departure from Intercontinental Airport on Wednesday, November 24, arriving in Vail in time to check out some of the night life! We will depart Denver Sunday night, giving us almost 4 days of skiing. Both flights are dinner flights and are non-stop.

We are staying at the Kiandra, which is conveniently located to lifts, restaurants, and clubs.

The total trip cost will be approximately \$158, which includes your air and bus transportation, four nights lodging (two to a room), pre-trip and post-trip parties, and wine and cheese parties in Vail. Not included are food, lift tickets, and lessons.

For those who want to "do their own thing" and ski other areas or whatever, we have made additional reservations on the plane for transportation only.

A \$50 deposit is required at the September meeting to hold your place and the final amount must be paid by the October meeting. This trip is limited to 40 people, so don't delay in getting your deposit to me. A word of warning...the past Thanksgiving trips have filled up and been wait listed long before time for the trip, so don't be a disappointed procrastinator.

Tiny Aitken, Trip Chairman  
2404 Yorktown, #104  
Houston, Texas 77027  
222-9051, Ext 47 621-9226

Jim Sirois, Asst. Trip Chairman  
524-6351 447-7033

## ASPEN

Seven days of Christmas at Aspen start for you the evening of December 26th when you leave on your flight to the high country. Your seven days of Aspenglow last thru January 2nd when you return to Houston.

Your Aspen-at-Christmas holiday is planned for a party of 100, fun-loving people at the world's most complete ski resort: four (the most) mountains and the finest in après ski.

Lodging is at the base of Buttermilk Mountain in the Holiday Inn. Room accommodations are for two-to-a-room, and the inn provides night time transportation until midnight to and from downtown Aspen.

Do something special for yourself. Join the Aspenglow crowd this year for seven days of Christmas. Reserve your place now for this sell-out, sure-fun ski holiday.

Bill Russell, Trip Chairman  
665-2892 or 521-4100

Pat Roberts, Asst. Trip Chairman 782-5263

## ASPEN

JANUARY 28 - FEBRUARY 5

The traditional Aspen trip will start Friday night January 28, 1972 with a 9:00 p.m. departure on a Texas International charter jet for Grand Junction. From there we will transfer the party to busses and continue on our way to beautiful Aspen.

Our February trips to Aspen have always been outstanding successes. This year we will have 8 full days of skiing and 7 nights to live it up in the worlds greatest ski resort. Accomodations will be in the Chateaux duMont and Chaumont in downtown Aspen near the famous clubs and restaurants. The Little Nell ski lift is about one block away and the free bus stop to Buttermilk and Highlands is at our back door. We have arranged for everyone to have 2 bedroom 2 bath apartments - four persons per unit.

Wine and cheese parties are planned for Saturday night at the chateau and Tuesday noon at Buttermilk on the bunny slope. In Aspen there is always a party every night so we'll have ample opportunity to get acquainted, swap stories, and enjoy being with a great group of people.

Beginning skiers who wish to take lessons will find that the ski schools in Aspen are truly outstanding and lots of fun. The Aspen mountain, Highlands, Buttermilk, and Snow Mas areas provide a complete variety of slopes so that everyone can enjoy skiing at their own level of ability.

Departure will be Saturday February 5 about 6:00p.m. in time to board our jet in Grand Junction about midnight.

Total cost of the trip including transportation, lodging and parties will be \$205.00. We plan for 99 people so be sure to sign up early.

Duke Walker, Trip Chairman  
2054 Southgate Blvd.  
Houston, Texas 77025  
Phone: 524-7387 or 221-4091

# STEAMBOAT SPRINGS/MT. WERNER January 14 - 19

Are you suffering from the Aspen, Vail, Europe syndrome? The remedy is to join ..... SCSC's premier trip to STEAMBOAT SPRINGS/MT. WERNER for 4½ days of fabulous skiing. The powder is Colorado's finest bubbling champagne variety, the slopes are all grades with an emphasis on good intermediate, the runs are nearly endless (to 3½ miles), and the lift lines are non-existent! Well almost, according to our Colorado ski friends. Twenty eight trails, 6 open slopes, 2,850' skiable vertical, bell gondola, 5 double chairs, 2 poma lifts, and for the truly adventurous - the famous Howelson Hill ski jump is only a block from downtown Steamboat. This year, FIS Gold medal winner Billy Kidd is the area ski director, and ex-Olympian Loris Werner heads the ski school. After the lifts close, Steamboat Springs comes alive with the apres-ski merriment of music, crackling fireplaces and hot spiced wine (or more potent potables).

We will depart Houston, Friday, January 14 on a late afternoon jet flight to Denver, then on to Steamboat Springs by chartered bus, with an arrival slated to allow most of a full night's rest. On our 5th ski day, Wednesday, January 19, a midday departure from Steamboat will permit an early evening return jet flight to Houston. The total estimated trip cost will be \$160.00 and includes air transportation, bus transportation, and 5 nights lodging at the base of Mt. Werner (a literal schuss to the ski lifts). An early \$50 deposit submittal will assure your place on this

trip, which will be limited to 36 people.

Jim Coyle, Trip Chairman  
2238 South Piney Point Rd.#207  
Houston, Texas 77042  
782-6549



Back by popular demand is our annual Lake Tahoe ski trip. We will fly out of Houston Saturday, March 11 via Denver and arrive in Reno shortly before noon. A bus will whisk us away to the popular SARAH TAHOE HOTEL-CASINO located on the south shore at the beautiful lake. For the record, the 600 room SARAH TAHOE will provide the most luxurious accommodations SPACE CITY SKI CLUB will have all year. This place is the end. It is the worlds largest casino with super star entertainment in three large showrooms, and naturally it has its own ski shop.

Skiing is only moments away at HEAVENLY VALLEY, which is the nations only interstate ski facility. Three of our six days of skiing will be on the north side of the lake at ALPINE MEADOWS, SKI INCLINE, and the world famous SQUAW VALLEY home of the 1960 OLYMPICS. If this is not enough of a variety there are eight more ski areas on the north side of Lake Tahoe.

After seven nights of winning at the casino and six days of the best skiing we will leave the SARAH TAHOE mid morning for our return flight which will arrive home Saturday, March 18 about sundown. ALL of this and MORE for just \$265, (you can win it back in the casino). You must go to believe it!

Jim McIntyre, Trip Chairman  
2200 Fountain View #65  
Houston, Texas 77027  
Home: 782-3991  
Office: 227-4371

Margie Fanette, Asst. Trip Chairman  
2532 Yorktown #47  
Houston, Texas 77027  
Home: 623-2226  
Office: 224-5301

## LET THERE BE VAIL

Spend Easter Week in fabulous Vail.

This year it's all together: two trips in one. Would you like to ski for more than a long weekend? Then make it Vail- Tuesday, March 28-April 2 (Easter Sunday). If you're a school teacher and can't get off for a week, make it Vail- Thursday, March 30-April 3.

The first 40 skiers (Group A) will depart Houston on Tuesday via commercial jet to Denver. Then by bus to Vail. The second 40 skiers (Group B) will depart Thursday afternoon for Denver, busing to Vail in time to do -- what ever turns them on. Group A will make the return trip to Houston late Easter Sunday with Group B following late Monday evening.

The cost: Group A (5 days-  
\$179.00)  
Group B (4 days-  
\$165.00)

For further information contact:

Trip Chairman- Group A  
Martha Sanford 785-8589  
Trip Chairman- Group B  
Jim Grassman 498-3228

# Europe On Skis

EXCITEMENT EUROPE '72

Here's the one you've waited for -- a first class European ski adventure at an economy price! It's our exciting 1972 SKI THE ALPS Special. Our destination is Chamonix--Argentiere, the premiere French winter resort and largest in the world. Long the capitol of Alpine sports, Chamonix was the site of the first Winter Olympics. Reigning majestically over the 10-mile long Chamonix Valley is the magnificent 15,781-foot Mont Blanc, the highest summit in Europe. Five separate major ski complexes, linked by regular shuttle bus service, occupy the length of the valley and surrounding mountains. Here you will find a fabulous assortment of ski runs for novice and expert alike, including the famous and scenic 12-mile long Vallée Blanche glacier run. Besides skiing, there is also tobogganing, ski parachuting, skating, and curling. For après-ski activities, the Chamonix Valley offers a variety of restaurants serving great food and wine, as well as discotheques, nightclubs, bars, and a casino. For

excursions, the Swiss and Italian borders are only about 9 miles away.

We will depart Houston about 10:00 p.m. on Thursday, February 17 via Air France's non-stop jet to Paris. After a short stop, we will continue on to Geneva, Switzerland.

Here we switch to deluxe buses for the scenic 2-hour ride to Chamonix-Argentiere, arriving

in time for dinner Friday evening. We will have seven full days of skiing beginning Saturday, including an optional day at Chamonix or another area in the French Alps on the following Friday. During our stay in Chamonix-Argentiere, we'll have a giant slalom race, with an awards party that evening complete with wine, prizes, and trophies. On Friday, February 25, we'll motor back to Geneva to spend 2 nights and a day. Sunday morning will find us on a plane to Paris, where we'll spend that afternoon and overnight. We'll depart Paris via Air France jet on Monday, February 28, arriving mid-afternoon in Houston. Total time lost from work -- only one week plus two days.

Lodging at Chamonix-Argentiere will be in condominium apartments--3-to-apartment for singles and 2-to-apartment for marrieds. Hotel accommodations in Geneva and Paris will be 2-to-a-room with private bath.

Total cost of the trip will be \$383 (or less, as it's possible that a small amount will be refunded, depending on monetary exchange rates at the time of the trip). This includes airfare, all ground transportation, lodging, assorted parties, and taxes and tips at airports and hotels. If desired, you can finance up to 80% of your trip through Air France for up to two years.

Other member clubs of the Texas Ski Council will be joining us in this European ski adventure. Together we are limited to one full plane, so don't be left

out! A \$55 deposit today will confirm your reservation (deposit is refundable--less \$10--up to December 20). Make deposit check payable to Space City Ski Club and mail to:

Ron Crossman, Trip Chairman  
351 N. Post Oak Lane #813  
Houston, Texas 77024  
681-1998

Willi Schaufelbuhl, Asst.  
Trip Chairman  
623-8465

# To ski or not to ski

SKI. SPRING 1971

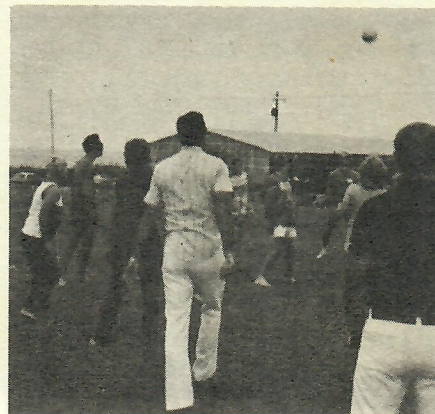


The summer activities have been quite successful and well attended by the membership. Our annual picnic at the Houston Yacht Club found lots of beer drinking, sailing and barbeque eating members and guests.

A lot of the members who filtered to the Port Hole Bar after the meal were lucky enough to hear the spontaneous piano entertainment by our own Jay Castille and Roxanne McKenzie. Soon the weight of the day's activities took its toll and a tired but happy group of skiers, turned sailors, headed back to port in Houston.

Ed Williams  
V.P. Programs

## SCSC MEMBERS AND GUESTS AT OUR ANNUAL SUMMER PICNIC



### GOLF "STARS" BEFORE PICNIC

Standing from left to right:  
John German-2nd low gross  
Bill Bidwell-3rd low gross  
Jim Sorcis-1st low gross

Kneeling from left to right:  
Mike Gay-1st low net  
Les Bennett-2nd low net  
J. Mulligan-3rd low net

## SKI TIPS

By Ed Williams  
Certified PSIA & RMSIA

The time has come, the instructor says, to speak of many things. Sharpening skis, filling holes, conditioning...

Take stock of your equipment so you will know what you need to replace and take advantage of the pre-season sales. Check the bottom of your skis for holes. They should be filled with the proper type of material, smoothed out and sanded smooth. The edges should be sharp enough that they will peel off some of the fingernail when rubbed across the edge.

Check the buckles on your boots. If you have a foam filled boot be sure and check the linings for possible leaks. Poles should be checked for straightness, busted baskets, and straps.

Pole length has been an item for dispute the past several years. The correct pole length is measured by two factors, your height and skiing technique. If you ski the old Austrian counter rotation and heel push technique the ski pole should pass slightly below the arm pit with the point of the pole on the floor. The pole will be about 80% of your height.

If you are up to date and skiing the modern techniques and trying to learn wheelies and jet turns then your pole should be about 65% of your height. Place the handle of the pole on the floor and hold the shaft between the tip and the basket. The pole should be perpendicular to the floor. A right angle should form between your upper arm and forearm, for the right length, (the forearm should be parallel to the floor).

**J. RICH SPORTS Ltd.**

2367 Rice Blvd. 529-8767  
1340 Galleria 626-3650

Charge Accounts Invited

## For Skiing Pleasure in '71-'72

Dymastar	Lange
K-2	Hanson
Head	Henke
Fischer	Rieker Boots
Daiwa	
Dynamic	Edelweiss
Hart	Alpine Sports
Skis	Bogner
RENTALS:	Head
Skis, Boots,	Spinnerin
Poles, Pants,	Meister
and Parkas	Sportscaster
	Ski Clothes

## \$ \$ DUES REMINDER \$ \$

Dues for 1971-1972 should now be paid. \$10.00-singles; \$15.00-married. Make checks payable to: SPACE CITY SKI CLUB and mail to: Joyce Testa, V.P.-Membership, 2408 Yorktown Apt. 240, Houston, Texas 77027

Membership Report as of August 19th, 1971:

58 New Members this summer.

Total Single Members	550
Total Married Members	416
Total Membership	966

## CONGRATULATIONS TO THE FOLLOWING NEWLY WEDS:

Ron Crossman & Halene Lipe,  
Peggy Adams & Lenny Marks,  
Beth Becker & William Nolen.

Our best to all of you!

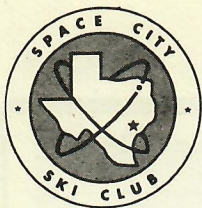
We will miss those who have moved: Sammie Lou Mavar (Lubbock, Texas), Don Holloway (London, England).

We know we have missed many people, so send us your news! Please phone Tanny Koepfel (Home 626-2081)(Work 733-9281) or mail to: 4643 Wild Indigo Apt. 397 Houston, Tx. 77027

## THE MEMBERSHIP BOX

Welcome New Members:

Roy Paul, Michael Neel, Susan Hall, Jane Marshall, Mary Zarsky, Charles Shumate, Gale Andis, John Stone, Donald and Sandra Casey, Linda Schmidt, Marjorie Grove, Ann Mitchum, Virginia Hall, Kay Bennett, Norma Frey, Patti Walson, Richard Laughlin, Holly Willis, Bobby While, Larry Wright, A.G. and Sandra Neelley, John Alt, Charles Walworth, Sandra Miller, Helen Hanna, Pat Malone, Gladys Murtschein, Trudy Gray, Lois Peavler, Betty Burge, C. B. and Carolyn Saunders, Kenneth Gallender, Randy Lawson, Anne Mooney, Bill Simmons, Don Tucker, Mike Walters, Roy and Tex Ann Herrington, Lenard Marks, Robert and Frankie Rownd, Marcia Richards, Pat Vigeon, James and Alice Gay, Tacy Bowman-Palik, David Richards, Annie Molina, H. Scott and Maye Ingersoll, Lynn Jenkins, Jerry and Sue Jenkins, Kay Dalive, Phil and Cynthia Baker, Buddy Crawford, Mike Brown, C. L. Savino, Linda Van Alstine, Cecile Koeger, Pete Caffield, Charles and Sally Hill.



## SPACE CITY SKI CLUB

P. O. Box 22567  
Houston, Texas 77027

### DATED MATTER

Page 8

September 1971

THE SITZMARKE



#### RMD NEWS

Darwin Miller

What is the RMD? What do I get if I join? What is my dues money used for?..... These are typical questions that are asked when someone is urged to join this division of the United States Ski Association. Several of your club officers and former officers have participated in RMD activities and developed varying stages of enthusiasm for the organization. You as club members have been asked to join the RMD and you have

raised some very valid questions about the benefits of membership. I will try to answer them by writing a series of short articles on the RMD and its workings for the Sitzmarke. I will attempt to acquaint you with the RMD by covering the following topics:

What is the RMD?  
How is it organized?  
What are its objectives, stated and real?  
How does it attempt to attain its objectives?

If you will bear with me through this series you will know more about the workings of this "ski country" division of the USSA. Whether or not you decide that it is worthy of your

\$4.00 remains to be seen, but I think that if you are serious about skiing as a recreational sport and desire to support the United States entries to international racing, that you will want to participate in the RMD. In the meantime, if you are already satisfied that a \$5.00 discount on a lift ticket is worth \$4.00, complete the accompanying form and send it to me with a check for your 1971-72 season RMD dues. Where else can you get 25% on your money these days?

## Snow Me.

#### RMD APPLICATION

ANNUAL DUES: \$4.00

Make check payable to: Rocky Mountain Division/USSA  
Mail to: Darwin Miller  
1631 Wavecrest  
Houston, Texas 77058

Please Print

Name \_\_\_\_\_

Address \_\_\_\_\_

City & State \_\_\_\_\_

Zip code \_\_\_\_\_

Ski Club \_\_\_\_\_