

# THE SITZMARKE



SPACE CITY SKI CLUB

HOUSTON, TEXAS

VOLUME 2

NOVEMBER, 1969

NUMBER 6

## Learn to ski the BIG ONE

**NEW SKIERS RALLY 'ROUND!**  
A beginners' dry land ski school called "Project Head Start," will hold its first one and a half hour sessions on November 18 and 19 from 7:30 - 9:00 pm. (Location will be announced at the November meeting.)

Ski instructors, Bruce Brandt of Oregon -- also the originator of this great, new SCSC program and Ed Williams of Taos, New Mexico, will give instruction on ski equipment, skiing terminology and the basics of American Ski Technique -- straight running position, snowplow position and snowplow turns, traverse position and many others.

If you are a beginning skier, who would like to get a "head start" on your first ski trip, sign up at the Project Head Start table at the November meeting. There will be a fee of \$2.00 to cover the cost of equipment rentals for the two sessions.

### First Session:

Group 1 - Nov. 18, 7:30-9 pm.

Group 2 - Nov. 19, 7:30-9 pm.

### Second Session:

Group 1 - Nov. 24, 7:30-9 pm.

Group 2 - Nov. 25, 7:30-9 pm.

These classes are limited to 25 club members per group. So, if you're interested in a head start on that first big ski trip -- sign up after the Style Show!!



Bruce Brandt, originator of the SCSC Beginners' Ski School, is pictured here against the heavy snows of Oregon.



Remember Last Winter? Get Ready Another Fantastic One!

### Regular Monthly Meeting

MONDAY

November 10, 1969

LOOK'S SIR-LOIN INN

"CROWN ROOM"

(Corner of the South Loop West and South Main)

Gentlemen are requested to wear coats.

A Musical Fashion Review saluting Colorado and featuring our own guys and gals modeling the latest in ski and apre-ski wear from Jack Rich's will highlight the November meeting. Don Holloway, the evening's major domo, has promised "The Ski Fashion Event of the Season!"

Social Hour begins at 7:30 pm. Plan to attend!!!

### **SKATING PARTIES SWINGING EVENTS**

Skating parties are in full swing at WINTERLAND ICE RINK (Richmond and Kirby) on the 2nd and 4th Thursdays of each month from 9:00 pm till 12 midnight.

Wine and cheese arrives at 10:00, when the rink is closed to the general public. Rental skates are available to club members at a discount.

If you really want to be in shape for the "First Run Of The Season" ... join us for skating, a game of "Broom Ball" (if you dare) and a little wine and cheese!!



## FROM THE HEAD OF THE LIFT LINE...

### ATTENTION NEW SKIERS !!!

Here is an opportunity to learn what it's all about before you go on your first trip -- Project Head Start! In two 1 1/2 hour classes, with equipment provided, you will learn the terminology and some of the mechanics of skiing from two qualified instructors.

You won't become an accomplished skier in two dry land sessions, but Project Head Start will provide you with a knowledge of the basic fundamentals so that when you do get to the ski slopes, you'll progress faster in that first ski school and find skiing more fun. See the details of our program elsewhere in The Sitzmarke.

The November meeting will be one of the highlights of the season -- The Annual Style Show featuring our own guys and dolls modeling the latest in ski fashions. Don't miss it!!

Deposit and full payment deadlines for many of the ski trips are drawing near. If you've not yet firmed up your trip plans and paid your money, I urge you to do it soon so that you'll not be left out of the trip(s) or your choice.

Our membership following the large October meeting is 388 single and 220 married members. We had 184 guests, of whom 68 joined SCSC.

The first skating party had a good turnout, and Winton Adams and James Dickson provided all with plenty of wine and cheese. If you missed it, I hope you'll be able to join us for the next one.

Ron Crossman  
SCSC President



**SPECIAL NOTE:** Sonny Look will make guest cards available to SCSC members who'd like to have dinner in his club following the monthly meeting.

**HATS OFF TO ...** all those nice people who helped us at the last meeting: Jim Smith, Sharon Lankersley, Annette Moore, Carol Prescott, Jeanne Bridgman, Kathy Wheeler, Buddy Crawford, Maureen Cronin, Barbara Nix, Diane Cain, Jim Beck, Merle Adams, and Rosi Fortin.

**SITZMARKE DEADLINES:** Because of holidays, all copy for November and December Sitzmarkes should be sent to Marty Sanford by the 15th of each month.

\*\*\*\*\*

**\*\* THE SITZMARKE \*\***

Published Monthly By  
The Space City Ski Club  
Houston, Texas

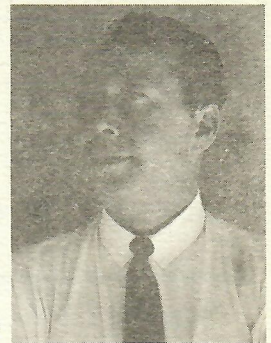
### EXECUTIVE COMMITTEE

Ron Crossman ....	621-2190
President	
Wayne Rentfro ....	468-4993
V. P. - Trips	
Harry Bristol ....	622-4786
V. P. - Programs	
Marjean Chrisman..	688-2739
V. P. - Membership	
Jay Elston .....	465-7240
Treasurer	
Eliza Jane Adams ..	771-3116
Secretary •	
Martha Sanford ....	523-9626
P. R. Director	

## SKI TIPS

by  
Ed Williams

(The author is a certified ski instructor in the Rocky Mt. Ski Instructor Assoc. and a former Senior Ski Instructor at Taos Valley.)



Last month I mentioned the term angulation. Standing in the snowplow position, angulation in the lower body becomes apparent. To assume the snowplow position, stand on your skis; then move your feet about 12 or 16 inches apart. The tails of your skis should be about the width of a ski pole. Your hips, knees and ankles are slightly flexed forward. Poles are held about hip high and forward, away from the body. The weight of your body is centered between both skis with equal weight on both skis. On the slopes, it may be necessary to push out with both heels to keep the skis from drifting together as you descend.

If you are in a correct snowplow position, you will notice each ski is slightly on its inside edge. The leg from the ankle up and the hip down to the knee is pointed in slightly towards the center (as a natural result of standing in the snowplow position). You are not to exaggerate pointing the knees towards the center. The lower part of your body is now in the position call angulation.

If you maintain this position and shift your weight to one ski bringing the other ski parallel to the one you now have your weight on, you will be standing in a natural parallel traverse position.



\*\*\*\*\*

RUIDOSO TRIP

December 26 - Jan. 1, 1970

Trip Chairman:

Jim Bigham - 591-3717

"Ode To Ruidoso"

Sign up soon and don't be too late,

Ruidoso's the place, Dec. 26 is the date;

Good company, fine skiing, new friends galore,

When comes January 1 to return, you'll only want more ( we hope).

So see your trip chairman, and give him your name.

\*\*\*\*\*

SANTA FE TRIP

December 26 - Jan. 1, 1970

Trip Chairman:

Darwin Miller - 488-3566



DO YOU KNOW THE WAY TO SANTA FE?

WE DO! COME JOIN US

For a swinging Christmas to New Year's ski week, fly with the S. C. S. C. to Santa Fe! The package includes food, lodging, transportation, insurance, and PARTIES!! Cost: \$190. See Darwin at the trip table for the complete details. It's a great trip!

\*\*\*\*\*

EUROPEAN TRIP

January 18 - Jan. 31, 1970

Trip Chairman:

Wayne Rentfro - 468-4993

This beautiful trip to Europe will fly Houstonian skiers to Switzerland via New York City. From Zurich it will be on - by rail - to St. Moritz and Grindelwald. Cost for one person: about \$520. This includes all transportation, lodging, and two meals a day.

SKI TRIPS FOR 1969/70

VAIL: Nov. 26 - 30

(Thanksgiving Wknd.)

RUIDOSO: Dec. 26 - Jan. 1

(Christmas - New Yrs.)

SANTA FE: Dec. 26 - Jan. 1

(Christmas - New Yrs.)

EUROPE: Jan. 18 - 31

ASPEN: Jan. 31 - Feb. 7

RUIDOSO: Feb. 19 - 22

LAKE TAHOE: March 7-14

VAIL: March 27 - 30

(Easter Wknd.)

## VAIL

We're off to Vail on Wednesday, November 26 at 3:10 pm. At this writing, 52 happy, eager skiers are looking forward to a white Thanksgiving and to staying at the Vail Village Inn.

Ski rentals, as mentioned in a recent mailing, are not available in Vail on a group basis. I might suggest you check with J. Rich Sports, Ltd. for your equipment - - the sooner the better!

The Pre-Trip Party has been for Monday, November 24 at 7:00 pm. (Location to be announced). Jim Walsh has consented to show some films of Vail that were taken last Thanksgiving. Also, roommate preferences will be determined.

The final balance was due November 1. If I do not receive the balance, \$105. each, by November 10, the first person on the waiting list will take your place. This procedure is necessary since there is not much time until our trip leaves.

Be sure to be at the airport by 2:15 pm. See you there. Hail VAIL !!!

Joan Whitten, Trip Chairman  
5331 Beverly Hill Lane #38A

\*\*\*\*\*

RUIDOSO TRIP

February 21 - Feb. 23, 1970

Trip Chairman:

George English

This long weekend economy special will feature three full days of skiing. Cost, including all transportation, lodging and insurance, will be \$55-65. (by Bus) or \$90-\$125. (by plane). Extra expenses will be lift tickets, meals and equipment rentals. See George for details.

\*\*\*\*\*

LAKE TAHOE TRIP

March 7 - March 14

Trip Chairman:

Ron Rambin - 926-8871, ext. 257

Come along with 95 other members of SCSC on the Lake Tahoe trip, a great all around vacation trip.

The trip is almost filled, so if you want to make this trip, get your \$50. deposit in immediately. The deposit is refundable until January 12.

\*\*\*\*\*

~~VAIL~~... ASPEN TRIP - Easter  
March 27 - March 30

Trip Chairman:

Jerry Chiles - 665-3667 (home)

ASPEN AT EASTER!

GOOD NEWS !! All you skiers who wanted to go to Aspen, but couldn't afford a week's vacation or signed up too late for the February trip, the Easter trip is going now to Aspen!

We plan to stay at the all new Holiday Inn at Aspen, complete with two restaurants, two night clubs, a sauna bath and heated swimming pool. We'll be leaving after work Thursday, March 26 via commercial airlines for Colorado and returning late Monday, March 30. This allows you four full days of skiing. Don't be left out! Sign Up Now!!





## SPACE CITY SKI CLUB

P. O. Box 22567  
Houston, Texas 77027

BULK RATE  
U. S. Postage  
PAID  
Houston, Texas  
Permit No. 9036

CORRECTED ADDRESS REQUESTED

Page 4

THE SITZMARKE

November, 1969

### CALENDAR OF EVENTS

#### November

Nov. 10 Monthly Meeting.  
Nov. 13 Skating Party  
Nov. 26 - 30  
Vail Trip

#### December

Dec. 8 Monthly Meeting  
Dec. 11 Skating Party  
Dec. 26 - Jan. 1, 1970  
Ruidoso Trip  
Dec. 26 - Jan. 1, 1970  
Santa Fe Trip

#### January

Jan. 12 Monthly Meeting  
Jan. 15 Skating Party  
Jan. 18 - 31  
European trip  
Jan. 29 Skating Party

\$

#### **SWAP SHOP**

For Sale: Lady's Holubar,  
\$60., 1969 model, down filled  
parka, gorgeous copper color,  
size 8 or 10. Will sell for \$30.  
Call: Jack Parker - 222-6281.

For Sale: One red, 1969  
Datson 2000 roadster, five  
speed, Prellie tires, 8000 miles  
Fantastic condition. Bought a  
plane, must sell car. Call Bruce  
Brandt - 781-3134.

\$

### ARE YOU RECEIVING YOUR CLUB MAILINGS ?

If you are not receiving club  
mailings or you have a new  
address or new phone number,  
PLEASE!! contact our mem-  
bership vice president:

Marjean Chrisman  
3771 Jardin  
Houston, Texas 77005  
office: 946-8700  
home: 668-2739

The club is using a computer  
service for addressing labels,  
and the possibility of typing  
errors is real.

Getting any new information  
to Marjean by the 15th of the  
month will insure the prompt  
delivery of your club mailings  
at the beginning of the next  
month.

### SKI HEADQUARTERS

We may be short on snow,

but, we're not short on the brands you know.

### SKI SHOP NOW OPEN

Make reservations now for Rentals at Christmas

Skis, Boots, Poles, and Clothes Rented

**J. RICH SPORTS Ltd.**

2367 Rice Blvd.

JA 9-8767