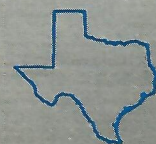




# SPACE CITY SKI CLUB



**TEXAS'  
LARGEST  
SKI CLUB**



MEMBER  
Texas Ski  
Council



# SPACE CITY SKI



*Snowmobiling*



*Sailing / Boating*



*Pub and Club Tour*



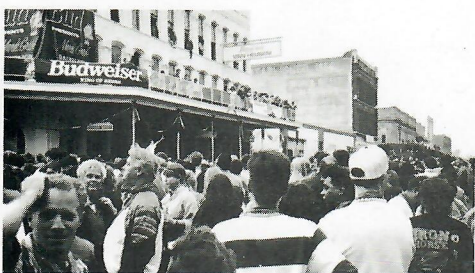
*Cultural Events / Theater*



*Colorado Ski Trip*



*Cards and Games Night*



*Mardi Gras*



*SCSC Follies*



*Canada Ski Trip*



*C & W Dancing*



*Scuba Diving*



*Montana Ski Trip*



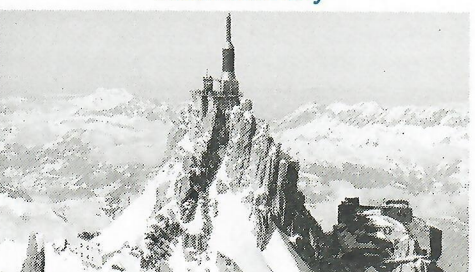
*Halloween Party*



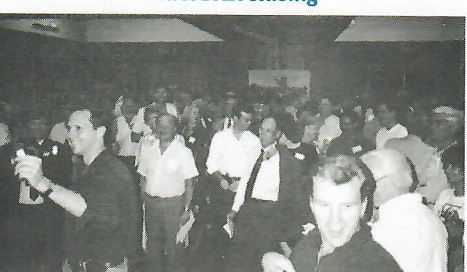
*NASTAR Racing*



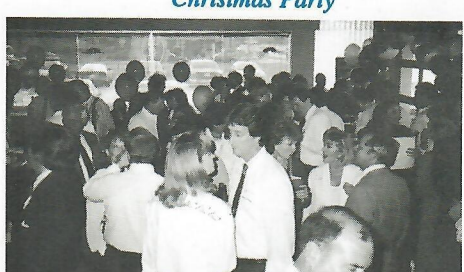
*Christmas Party*



*Alps Ski Trip*



*General Meeting September - May  
2nd Monday of Month*



*Monthly Happy Hour  
3rd Thursday of Month*



# CLUB ACTIVITIES



*Rafting*



*Bicycling*



*Utah Ski Trip*



*Dickens on the Strand*



*Hot Tub on Ski Trip*



*Golf*



*Nevada Ski Trip*



*Camping*



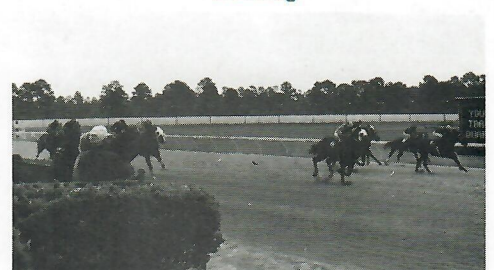
*Bowling*



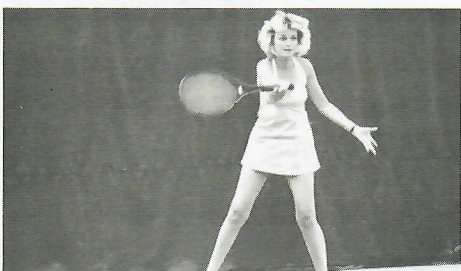
*Wyoming Ski Trip*



*SCSC Style Show*



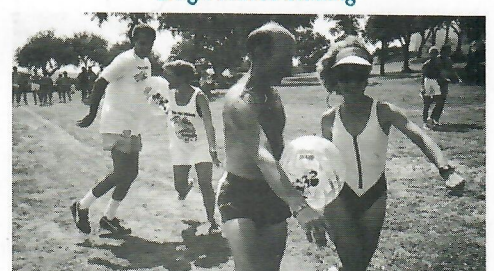
*Dog / Horse Racing*



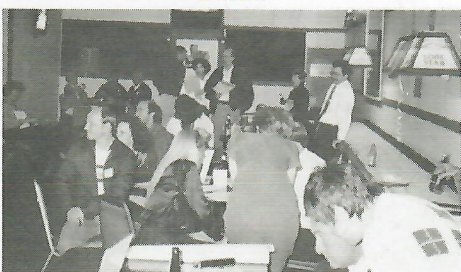
*Tennis*



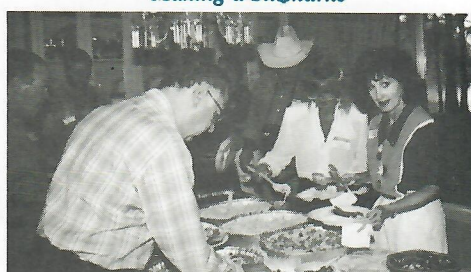
*Making a Sitzmarke*



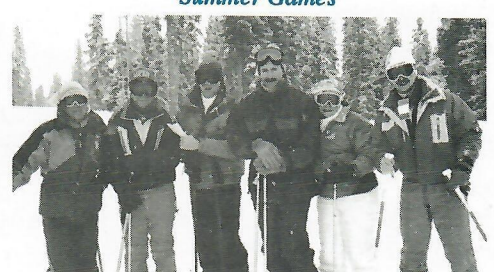
*Summer Games*



*Pre-Trip Party*



*Post-Trip Party*



*New Mexico Ski Trip*



# SPACE CITY SKI CLUB

## Mission

The purpose of the Space City Ski Club is to promote and encourage individual and group interest in snow skiing. Founded in 1964 in Houston, the Club's purposes are: *to encourage snow skiing; to conduct economical and enjoyable ski trips; to introduce the sport to beginners; and to provide a wide variety of social/sports events year round for its members.*

The Club is administered entirely by volunteers, who through hard work, dedication and training have made the Club widely known for its excellence in operations and quality of events.

## Member Profile

Membership is opened to persons 21 or older. Most Club members are snow skiing enthusiasts or beginners. Ages range from 21 to over 70. Two-thirds are single, one-third are couples, with an equal number of men and women members. Members are from all professions and economic status.

Members mainly enjoy meeting other people and appreciate the social benefits of a large group. Club membership is limited to 1,400, and typically fills by the start of the ski season in November. A dedicated effort is made to make new members feel at home as soon as they join.

## Club Benefits

Each year the Club plans 15-16 ski trips to the world's finest resorts in the US, Canada and Europe. The trips provide over 600 skiers with around 3,500 skiing days. Through group buying, members enjoy low costs, plus have the benefit of skiing and partying with friendly Club members who may become long lasting friends.

Other activities offered include sports tournaments, cultural outings, parties, out-of-town events and many more fun events that members dream up and volunteer to run. Usually there are 4-5 activities to choose from each month. Also, there are monthly meetings and happy hours. You will never lack for a social/sports event.

Each month our award-winning magazine, **Sitzmarke**, is provided free to members announcing all events for the next few months. The **Sitzmarke** describes recently completed trips and events.

Club members are entitled to discounts from

certain local sports supply stores using their membership card.

The Club is also a member of the Texas Ski Council, and all members receive additional benefits while on Council trips and events.

## How Do You Join ?

Call **688-SCSC** to obtain a membership form from the VP of Membership. The phone message will also provide information on upcoming events where you can meet members and obtain a form. Two current members' signatures are required to sponsor an applicant. The members can be friends or member acquaintances met at any of the Club's activities. Annual dues are **\$25** for singles and **\$35** for married couples. The membership year ends on April 30. Early renewal discounts are available.

## Typical Ski Trips

Aspen/Snowmass, CO	Lake Tahoe, NV
Vail, CO	Taos, NM
New England	Steamboat, CO
Breckenridge, CO	Jackson Hole, WY
Park City, UT	Banff, CN
Big Sky, MT	The Alps

Other resorts frequented include: Crested Butte, Keystone, Purgatory, Copper Mt., Whistler, Snowbird, Sun Valley, Big Sky and Telluride.

## Typical Social / Sports Events

Tennis	Spring
Bicycling	Spring
Galveston Mardi Gras	Spring
Ski Club Follies	Spring
Rafting	Spring
Sailing/Boating	Summer
Scuba Diving	Summer
Golf	Summer
Dog/Horse Racing	Summer
Corpus Christi Summer Games	Summer
Camping	Fall
Cards and Games Night	Fall
Ski Club Style Show	Fall
C & W Dancing	Fall
Halloween Party	Fall
Cultural/Theater	Winter
Dickens on the Strand	Winter
Bowling	Winter
Pub and Club Crawl	Winter
Christmas Party	Winter